

## ARP-1 Rabbit pAb

CatalogNo: YT0335

### | Key Features

#### Host Species

- Rabbit

#### Reactivity

- Human, Mouse, Rat

#### Applications

- WB, IHC, IF, ELISA

#### MW

- 45kD (Observed)

#### Isotype

- IgG

### | Recommended Dilution Ratios

**WB 1:500-1:2000**

**IHC 1:100-1:300**

**IF 1:200-1:1000**

**ELISA 1:10000**

**Not yet tested in other applications.**

### | Storage

#### Storage\*

-15°C to -25°C/1 year (Do not lower than -25°C)

#### Formulation

Liquid in PBS containing 50% glycerol, 0.5% BSA and 0.02% sodium azide.

### | Basic Information

#### Clonality

Polyclonal

### | Immunogen Information

#### Immunogen

The antiserum was produced against synthesized peptide derived from human COT2. AA range: 1-50

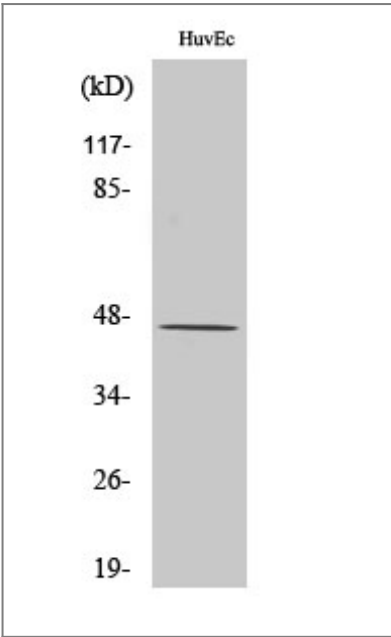
#### Specificity

ARP-1 Polyclonal Antibody detects endogenous levels of ARP-1 protein.

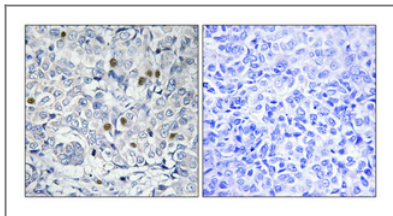
## Target Information

Gene name	NR2F2		
Protein Name	COUP transcription factor 2		
	Organism	Gene ID	UniProt ID
	Human	<a href="#">7026</a> ;	<a href="#">P24468</a> ;
	Mouse	<a href="#">11819</a> ;	<a href="#">P43135</a> ;
	Rat	<a href="#">113984</a> ;	<a href="#">O09018</a> ;
Cellular Localization	Nucleus.		
Tissue specificity	Ubiquitous. Expressed in the stromal cells of developing fetal ovaries (PubMed:29478779).		
Function	Function:Regulation of the apolipoprotein A-I gene transcription. Binds to DNA site A.,similarity:Belongs to the nuclear hormone receptor family.,similarity:Belongs to the nuclear hormone receptor family. NR2 subfamily.,similarity:Contains 1 nuclear receptor DNA-binding domain.,subunit:Interacts with SQSTM1 (By similarity). Binds DNA as a homodimer.,tissue specificity:Found in all tissues.,		

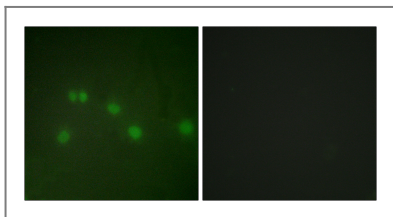
## Validation Data



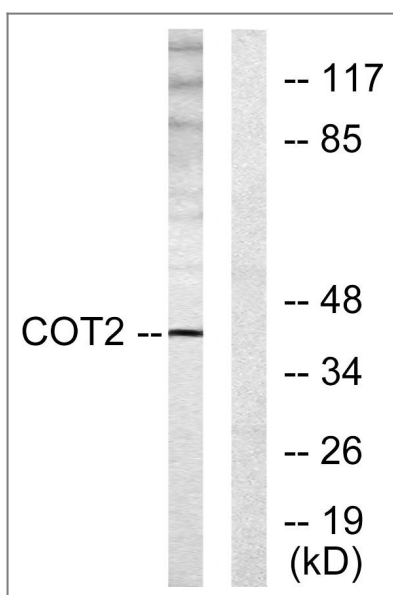
Western Blot analysis of various cells using ARP-1 Polyclonal Antibody cells nucleus extracted by Minute TM Cytoplasmic and Nuclear Fractionation kit (SC-003, Invent biotech, MN, USA).



Immunohistochemical analysis of paraffin-embedded Human breast cancer. Antibody was diluted at 1:100(4° overnight). High-pressure and temperature Tris-EDTA,pH8.0 was used for antigen retrieval. Negative contrl (right) obtained from antibody was pre-absorbed by immunogen peptide.



Immunofluorescence analysis of HUVEC cells, using COT2 Antibody. The picture on the right is blocked with the synthesized peptide.



Western blot analysis of lysates from HUVEC cells, using COT2 Antibody. The lane on the right is blocked with the synthesized peptide.

## Contact information

Orders: [order@immunoway.com](mailto:order@immunoway.com)  
 Support: [tech@immunoway.com](mailto:tech@immunoway.com)  
 Telephone: 877-594-3616 (Toll Free), 408-747-0185  
 Website: <http://www.immunoway.com>  
 Address: 2200 Ringwood Ave San Jose, CA 95131 USA



Please scan the QR code to access additional product information:  
**ARP-1 Rabbit pAb**

For Research Use Only. Not for Use in Diagnostic Procedures.

[Antibody](#) | [ELISA Kits](#) | [Protein](#) | [Reagents](#)