

## ARMCX2 Rabbit pAb

CatalogNo: YT0332

### | Key Features

#### Host Species

- Rabbit

#### Reactivity

- Human, Mouse, Rat

#### Applications

- WB, IHC, IF, ELISA

#### MW

- 65kD (Observed)

#### Isotype

- IgG

### | Recommended Dilution Ratios

**WB 1:500-1:2000**

**IHC 1:100-1:300**

**IF 1:200-1:1000**

**ELISA 1:20000**

**Not yet tested in other applications.**

### | Storage

#### Storage\*

-15°C to -25°C/1 year (Do not lower than -25°C)

#### Formulation

Liquid in PBS containing 50% glycerol, 0.5% BSA and 0.02% sodium azide.

### | Basic Information

#### Clonality

Polyclonal

### | Immunogen Information

#### Immunogen

The antiserum was produced against synthesized peptide derived from human ARM CX2. AA range: 321-370

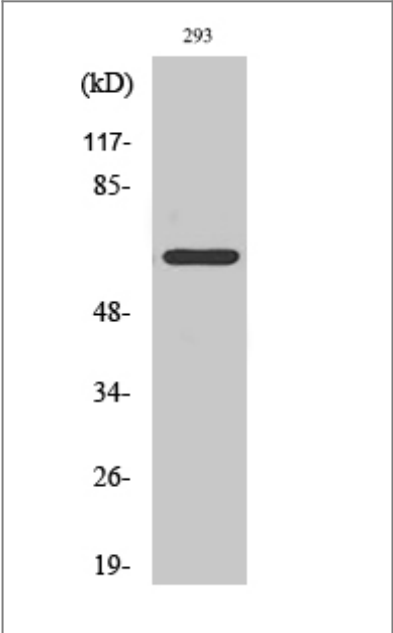
#### Specificity

ARM CX2 Polyclonal Antibody detects endogenous levels of ARM CX2 protein.

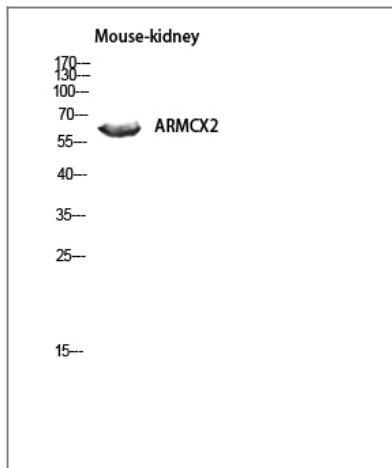
## | Target Information

Gene name	ARMCX2		
Protein Name	Armadillo repeat-containing X-linked protein 2		
	Organism	Gene ID	UniProt ID
	Human	<a href="#">9823</a> ;	<a href="#">Q7L311</a> ;
	Mouse	<a href="#">67416</a> ;	<a href="#">Q6A058</a> ;
Cellular Localization	Mitochondrion . Mitochondrion outer membrane ; Single-pass membrane protein .		
Tissue specificity	Expressed at high levels ovary, heart, testis, prostate, brain, spleen and colon. Expressed at very low levels in liver and thymus. Not expressed in peripheral blood leukocytes. Not expressed in pancreas and ovarian carcinomas.		
Function	similarity:Contains 3 ARM repeats.,tissue specificity:Expressed at high levels ovary, heart, testis, prostate, brain, spleen and colon. Expressed at very low levels in liver and thymus. Not expressed in peripheral blood leukocytes. Not expressed in pancreas and ovarian carcinomas.,		

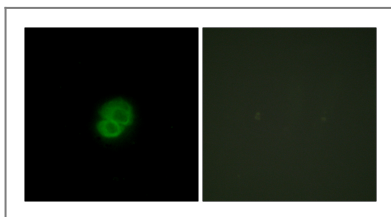
## | Validation Data



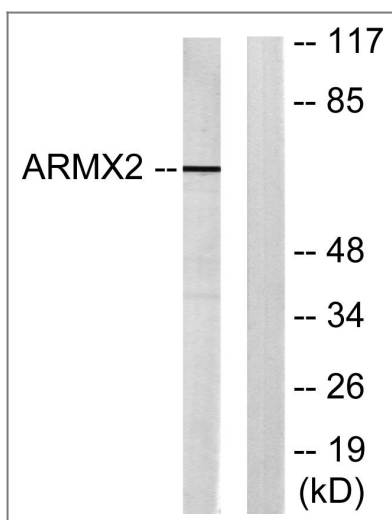
Western Blot analysis of various cells using ARMCX2 Polyclonal Antibody diluted at 1:1000



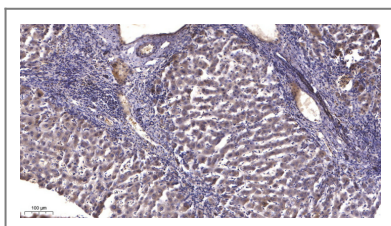
Western blot analysis of Mouse-kidney lysis using ARM CX2 antibody. Antibody was diluted at 1:1000



Immunofluorescence analysis of HepG2 cells, using ARM CX2 Antibody. The picture on the right is blocked with the synthesized peptide.



Western blot analysis of lysates from 293 cells, using ARM CX2 Antibody. The lane on the right is blocked with the synthesized peptide.



Immunohistochemical analysis of paraffin-embedded human liver cancer. 1, Antibody was diluted at 1:200(4° overnight). 2, Tris-EDTA,pH9.0 was used for antigen retrieval. 3,Secondary antibody was diluted at 1:200(room temperature, 45min).

## Contact information

Orders: order@immunoway.com  
 Support: tech@immunoway.com  
 Telephone: 877-594-3616 (Toll Free), 408-747-0185  
 Website: <http://www.immunoway.com>  
 Address: 2200 Ringwood Ave San Jose, CA 95131 USA



Please scan the QR code to access additional product information:  
**ARM CX2 Rabbit pAb**

