

## AR $\alpha$ 2A Rabbit pAb

CatalogNo: YT0298

### Key Features

#### Host Species

- Rabbit

#### Reactivity

- Human, Mouse, Rat

#### Applications

- WB, IHC, IF, ELISA

#### MW

- 48kD (Observed)

#### Isotype

- IgG

### Recommended Dilution Ratios

**WB 1:500-1:2000**

**IHC 1:100-1:300**

**IF 1:200-1:1000**

**ELISA 1:20000**

**Not yet tested in other applications.**

### Storage

#### Storage\*

-15°C to -25°C/1 year (Do not lower than -25°C)

#### Formulation

Liquid in PBS containing 50% glycerol, 0.5% BSA and 0.02% sodium azide.

### Basic Information

#### Clonality

Polyclonal

### Immunogen Information

#### Immunogen

The antiserum was produced against synthesized peptide derived from human Adrenergic Receptor alpha-2A. AA range:331-380

#### Specificity

AR  $\alpha$ 2A Polyclonal Antibody detects endogenous levels of AR  $\alpha$ 2A protein.

## | Target Information

**Gene name** ADRA2A

**Protein Name** Alpha-2A adrenergic receptor

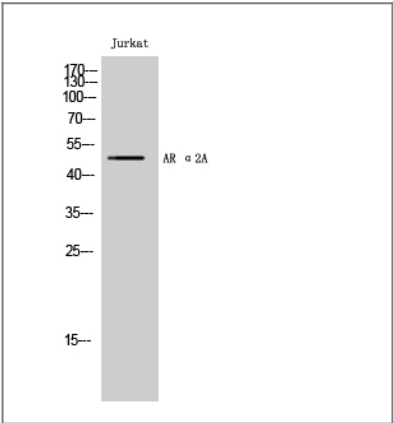
Organism	Gene ID	UniProt ID
Human	<a href="#">150</a> ;	<a href="#">P08913</a> ;
Mouse		<a href="#">Q01338</a> ;
Rat	<a href="#">25083</a> ;	<a href="#">P22909</a> ;

**Cellular Localization** Cell membrane ; Multi-pass membrane protein .

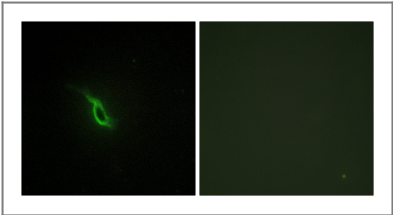
**Tissue specificity** Epithelium,Platelet,PNS,Testis,

**Function** Function:Alpha-2 adrenergic receptors mediate the catecholamine-induced inhibition of adenylate cyclase through the action of G proteins. The rank order of potency for agonists of this receptor is oxymetazoline > clonidine > epinephrine > norepinephrine > phenylephrine > dopamine > p-synephrine > p-tyramine > serotonin = p-octopamine. For antagonists, the rank order is yohimbine > phentolamine = mianserine > chlorpromazine = spiperone = prazosin > propranolol > alprenolol = pindolol.,similarity:Belongs to the G-protein coupled receptor 1 family.,

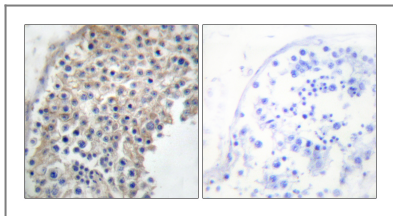
## | Validation Data



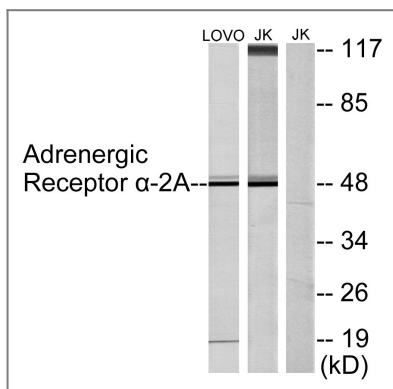
Western Blot analysis of Jurkat cells using AR α2A Polyclonal Antibody



Immunofluorescence analysis of NIH/3T3 cells, using Adrenergic Receptor alpha-2A Antibody. The picture on the right is blocked with the synthesized peptide.



Immunohistochemistry analysis of paraffin-embedded human testis tissue, using Adrenergic Receptor alpha-2A Antibody. The picture on the right is blocked with the synthesized peptide.



Western blot analysis of lysates from Jurkat and LOVO cells, using Adrenergic Receptor alpha-2A Antibody. The lane on the right is blocked with the synthesized peptide.

## Contact information

Orders: [order@immunoway.com](mailto:order@immunoway.com)  
 Support: [tech@immunoway.com](mailto:tech@immunoway.com)  
 Telephone: 877-594-3616 (Toll Free), 408-747-0185  
 Website: <http://www.immunoway.com>  
 Address: 2200 Ringwood Ave San Jose, CA 95131 USA



Please scan the QR code to access additional product information:  
**AR  $\alpha$ 2A Rabbit pAb**

For Research Use Only. Not for Use in Diagnostic Procedures.

[Antibody](#) | [ELISA Kits](#) | [Protein](#) | [Reagents](#)