

AQP12 Rabbit pAb

CatalogNo: YT0289

Key Features

Host Species

- Rabbit

Reactivity

- Human

Applications

- WB,ELISA

MW

- 34kD (Observed)

Isotype

- IgG

Recommended Dilution Ratios

WB 1:500-1:2000

ELISA 1:40000

Not yet tested in other applications.

Storage

Storage*

-15°C to -25°C/1 year(Do not lower than -25°C)

Formulation

Liquid in PBS containing 50% glycerol, 0.5% BSA and 0.02% sodium azide.

Basic Information

Clonality

Polyclonal

Immunogen Information

Immunogen

The antiserum was produced against synthesized peptide derived from human AQP12. AA range:231-280

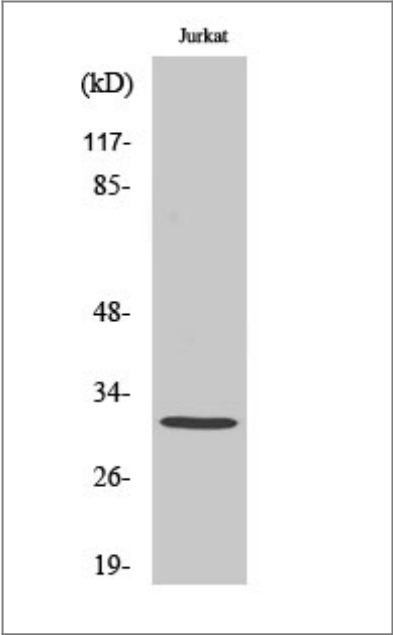
Specificity

AQP12 Polyclonal Antibody detects endogenous levels of AQP12 protein.

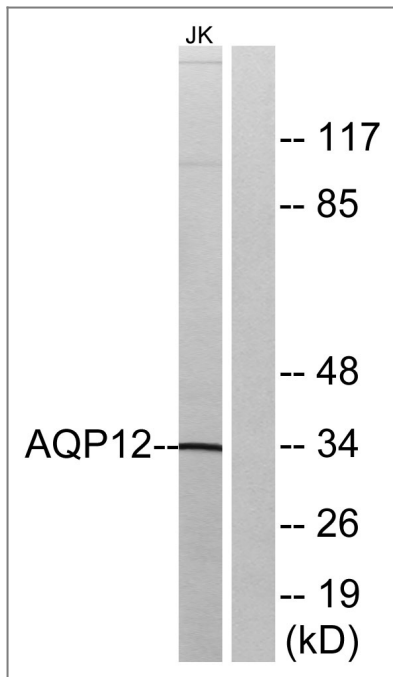
Target Information

Gene name	AQP12A/AQP12B		
Protein Name	Aquaporin-12A/B		
	Organism	Gene ID	UniProt ID
	Human	375318 ; 653437 ;	Q8IXF9 ; A6NM10 ;
Cellular Localization	Membrane ; Multi-pass membrane protein .		
Tissue specificity	Restricted to the pancreas.		
Function	Domain:Aquaporins contain two tandem repeats each containing three membrane-spanning domains and a pore-forming loop with the signature motif Asn-Pro-Ala (NPA).,Function:Aquaporins facilitate the transport of water and small neutral solutes across cell membranes.,similarity:Belongs to the MIP/aquaporin (TC 1.A.8) family. AQP11/AQP12 subfamily.,tissue specificity:Restricted to the pancreas.,		

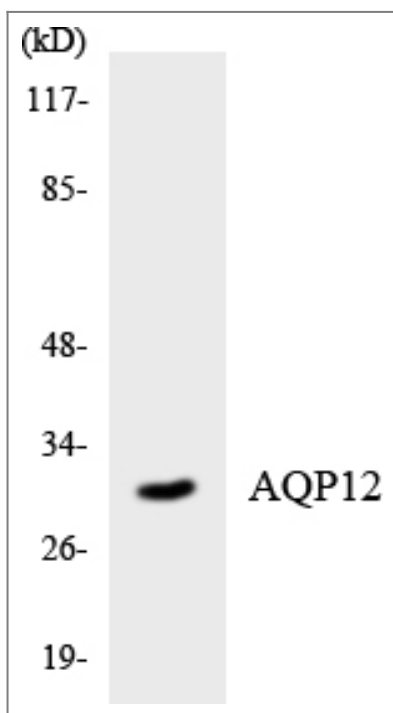
| Validation Data



Western Blot analysis of various cells using AQP12 Polyclonal Antibody diluted at 1:1000



Western blot analysis of lysates from Jurkat cells, using AQP12 Antibody. The lane on the right is blocked with the synthesized peptide.



Western blot analysis of the lysates from HUVEC cells using AQP12 antibody.

Contact information

Orders: order@immunoway.com
 Support: tech@immunoway.com
 Telephone: 877-594-3616 (Toll Free), 408-747-0185
 Website: <http://www.immunoway.com>
 Address: 2200 Ringwood Ave San Jose, CA 95131 USA



Please scan the QR code to access additional product information:
AQP12 Rabbit pAb

