

ApoF Rabbit pAb

CatalogNo: YT0276

Key Features

Host Species

- Rabbit

Reactivity

- Human,Rat,Mouse,

Applications

- WB,ELISA

MW

- 38kD (Observed)

Isotype

- IgG

Recommended Dilution Ratios

WB 1:500-1:2000

ELISA 1:40000

Not yet tested in other applications.

Storage

Storage* -15°C to -25°C/1 year(Do not lower than -25°C)

Formulation Liquid in PBS containing 50% glycerol, 0.5% BSA and 0.02% sodium azide.

Basic Information

Clonality Polyclonal

Immunogen Information

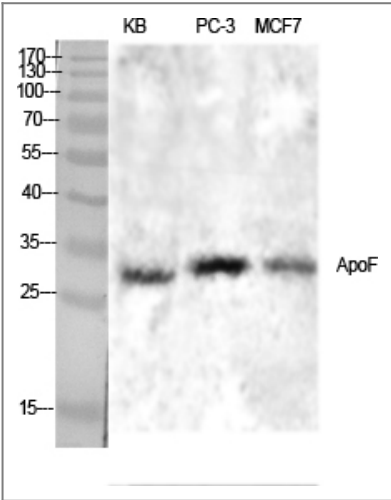
Immunogen The antiserum was produced against synthesized peptide derived from human APOF. AA range:221-270

Specificity ApoF Polyclonal Antibody detects endogenous levels of ApoF protein.

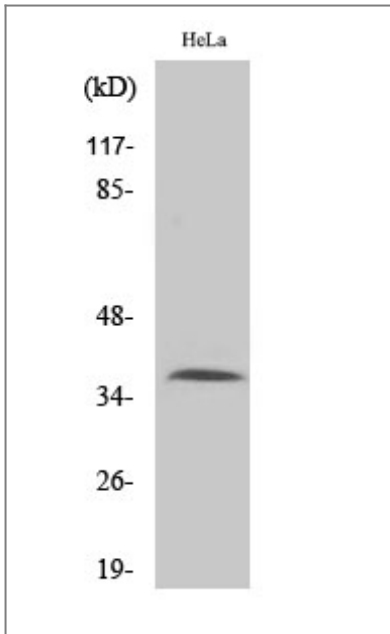
Target Information

Gene name	APOF		
Protein Name	Apolipoprotein F		
	Organism	Gene ID	UniProt ID
	Human	319;	Q13790;
	Mouse		Q91V80;
Cellular Localization	Secreted .		
Tissue specificity	Expressed by the liver and secreted in plasma.		
Function	Function:Minor apolipoprotein that associates with LDL. Inhibits cholesteryl ester transfer protein (CETP) activity and appears to be an important regulator of cholesterol transport. Also associates to a lesser degree with VLDL, Apo-AI and Apo-AII.,tissue specificity:Liver. Secreted in plasma.,		

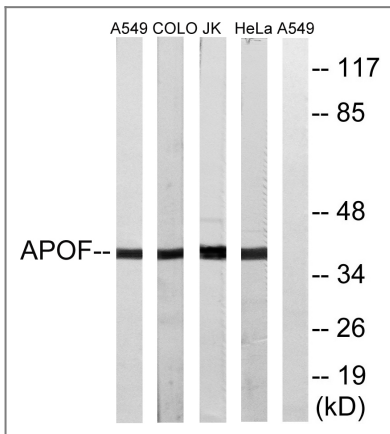
| Validation Data



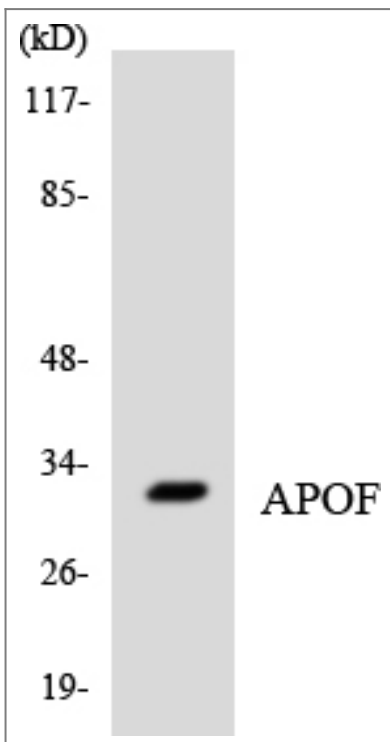
Western Blot analysis of various cells using ApoF Polyclonal Antibody diluted at 1:1000



Western Blot analysis of A549 cells using ApoF Polyclonal Antibody diluted at 1:1000



Western blot analysis of lysates from HeLa, Jurkat, COLO, and A549 cells, using APOF Antibody. The lane on the right is blocked with the synthesized peptide.



Western blot analysis of the lysates from COLO205 cells using APOF antibody.

| Contact information

Orders: order@immunoway.com
Support: tech@immunoway.com
Telephone: 877-594-3616 (Toll Free), 408-747-0185
Website: <http://www.immunoway.com>
Address: 2200 Ringwood Ave San Jose, CA 95131 USA



Please scan the QR code
to access additional
product information:
ApoF Rabbit pAb

For Research Use Only. Not for Use in Diagnostic Procedures.

[Antibody](#) | [ELISA Kits](#) | [Protein](#) | [Reagents](#)