

## API5 Rabbit pAb

CatalogNo: YT0264

### Key Features

#### Host Species

- Rabbit

#### Reactivity

- Human, Mouse

#### Applications

- WB, IHC, IF, ELISA

#### MW

- 58kD (Observed)

#### Isotype

- IgG

### Recommended Dilution Ratios

**WB 1:500-1:2000**

**IHC 1:100-1:300**

**ELISA 1:20000**

**IF 1:50-200**

### Storage

#### Storage\*

-15°C to -25°C/1 year (Do not lower than -25°C)

#### Formulation

Liquid in PBS containing 50% glycerol, 0.5% BSA and 0.02% sodium azide.

### Basic Information

#### Clonality

Polyclonal

### Immunogen Information

#### Immunogen

The antiserum was produced against synthesized peptide derived from human API-5. AA range: 421-470

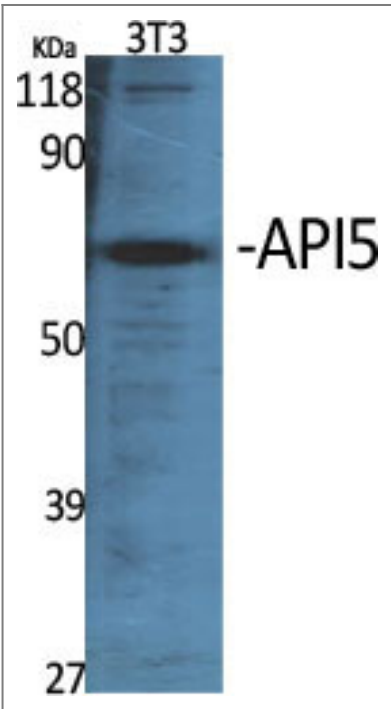
#### Specificity

API5 Polyclonal Antibody detects endogenous levels of API5 protein.

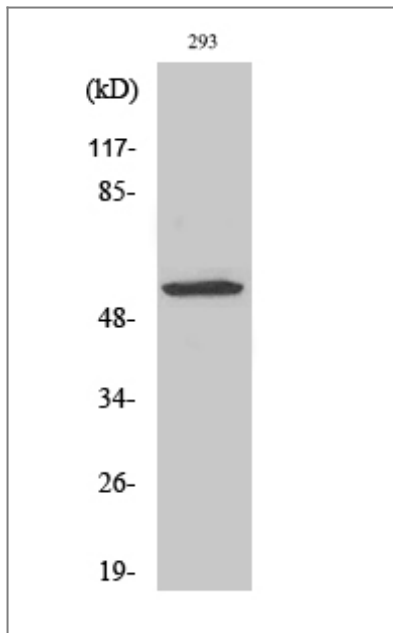
### Target Information

Gene name	API5		
Protein Name	Apoptosis inhibitor 5		
	Organism	Gene ID	UniProt ID
	Human	<a href="#">8539</a> ;	<a href="#">Q9BZZ5</a> ;
	Mouse	<a href="#">11800</a> ;	<a href="#">O35841</a> ;
Cellular Localization	Nucleus . Cytoplasm . Mainly nuclear. Can also be cytoplasmic.; [Isoform 3]: Cytoplasm.		
Tissue specificity	Expressed in all tissues tested, including heart, brain, placenta, lung, liver, skeletal muscle, kidney and pancreas. Highest levels in heart, pancreas and placenta. Highly expressed in several cancers. Preferentially expressed in squamous cell carcinoma versus adenocarcinoma in non-small cell lung cancer.		
Function	<p>Alternative products:Additional isoforms seem to exist,Domain:Two regions, an N-terminal (aa 96-107) and a C-terminal (aa 274-311) are required for binding FGF2.,Function:Antiapoptotic factor that may have a role in protein assembly. Negatively regulates ACIN1. By binding to ACIN1, it suppresses ACIN1 cleavage from CASP3 and ACIN1-mediated DNA fragmentation. Also known to efficiently suppress E2F1-induced apoptosis. Its depletion enhances the cytotoxic action of the chemotherapeutic drugs.,sequence Caution:Translation N-terminally shortened.,similarity:Belongs to the API5 family.,subcellular location:Mainly nuclear. Can also be cytoplasmic.,subunit:Homooligomer. Interacts with FGF2 and ACIN1.,tissue specificity:Expressed in all tissues tested, including heart, brain, placenta, lung, liver, skeletal muscle, kidney and pancreas. Highest levels in heart, pancreas and placenta. Highly expressed in several cancers. Preferentially expressed in squamous cell carcinoma versus adenocarcinoma in non-small cell lung cancer.,</p>		

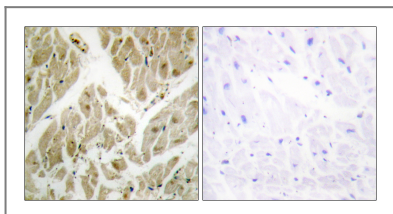
| Validation Data



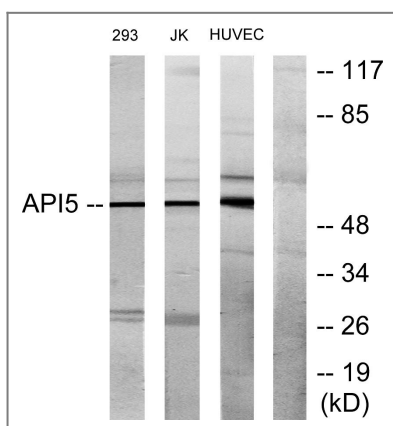
Western Blot analysis of various cells using API5 Polyclonal Antibody diluted at 1:1000



Western Blot analysis of HuvEc cells using API5 Polyclonal Antibody diluted at 1:1000



Immunohistochemistry analysis of paraffin-embedded human heart tissue, using API-5 Antibody. The picture on the right is blocked with the synthesized peptide.



Western blot analysis of lysates from 293, Jurkat, and HUVEC cells, using API-5 Antibody. The lane on the right is blocked with the synthesized peptide.

## Contact information

Orders: [order@immunoway.com](mailto:order@immunoway.com)  
 Support: [tech@immunoway.com](mailto:tech@immunoway.com)  
 Telephone: 877-594-3616 (Toll Free), 408-747-0185  
 Website: <http://www.immunoway.com>  
 Address: 2200 Ringwood Ave San Jose, CA 95131 USA



Please scan the QR code to access additional product information:  
**API5 Rabbit pAb**