

ANT4 Rabbit pAb

CatalogNo: YT0242

Key Features

Host Species

- Rabbit

Reactivity

- Human, Mouse

Applications

- WB, IHC, IF, ELISA

MW

- 35kD (Observed)

Isotype

- IgG

Recommended Dilution Ratios

WB 1:500-1:2000

IHC 1:100-1:300

IF 1:200-1:1000

ELISA 1:40000

Not yet tested in other applications.

Storage

Storage*

-15°C to -25°C/1 year (Do not lower than -25°C)

Formulation

Liquid in PBS containing 50% glycerol, 0.5% BSA and 0.02% sodium azide.

Basic Information

Clonality

Polyclonal

Immunogen Information

Immunogen

The antiserum was produced against synthesized peptide derived from human SLC25A31. AA range:131-180

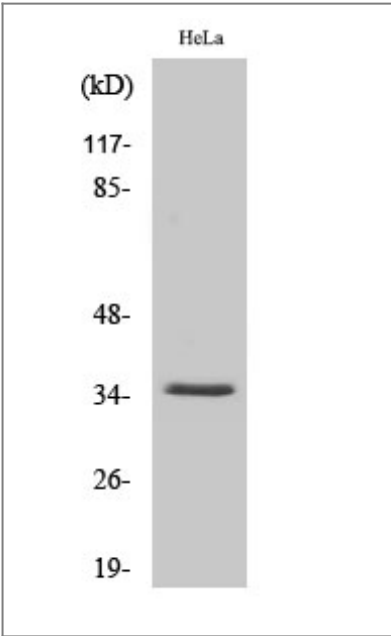
Specificity

ANT4 Polyclonal Antibody detects endogenous levels of ANT4 protein.

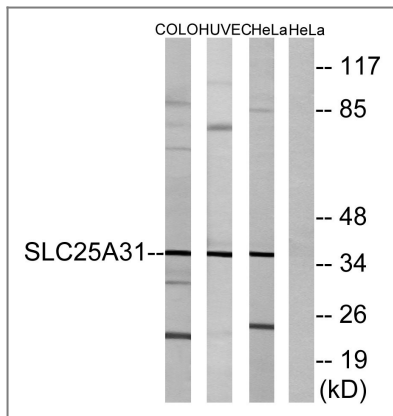
Target Information

Gene name	SLC25A31		
Protein Name	ADP/ATP translocase 4		
	Organism	Gene ID	UniProt ID
	Human	83447 ;	Q9H0C2 ;
	Mouse	73333 ;	Q3V132 ;
Cellular Localization	Mitochondrion inner membrane ; Multi-pass membrane protein . Membrane ; Multi-pass membrane protein . Cell projection, cilium, flagellum membrane ; Multi-pass membrane protein . In sperm flagellum this protein is located in the fibrous sheath, a non-mitochondrial region (PubMed:17137571). May localize to non-mitochondrial membranes (PubMed:27641616). .		
Tissue specificity	Expressed in brain, liver, sperm and testis (PubMed:15670820, PubMed:17137571). In testis, expressed at higher level in spermatocytes, while it is expressed at lower level in spermatogonial cells (PubMed:17681941). Expressed in erythrocytes (at protein level) (PubMed:27641616).		
Function	Function:Catalyzes the exchange of ADP and ATP across the mitochondrial inner membrane. May serve to mediate energy generating and energy consuming processes in the distal flagellum, possibly as a nucleotide shuttle between flagellar glycolysis, protein phosphorylation and mechanisms of motility.,similarity:Belongs to the mitochondrial carrier family.,similarity:Contains 3 Solcar repeats.,subcellular location:In sperm flagellum this protein is located in the fibrous sheath, a non-mitochondrial region.,tissue specificity:Expressed in brain, liver, sperm and testis.,		

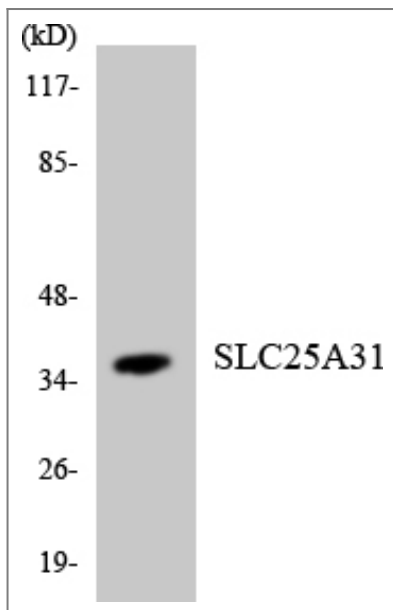
Validation Data



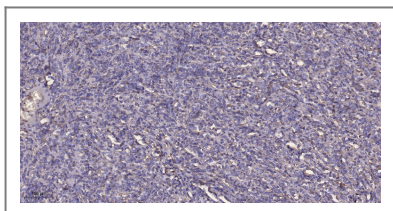
Western Blot analysis of various cells using ANT4 Polyclonal Antibody diluted at 1:500



Western blot analysis of lysates from HeLa, HUVEC, and COLO cells, using SLC25A31 Antibody. The lane on the right is blocked with the synthesized peptide.



Western blot analysis of the lysates from K562 cells using SLC25A31 antibody.



Immunohistochemical analysis of paraffin-embedded human Colon cancer. 1, Antibody was diluted at 1:200(4° overnight). 2, Tris-EDTA,pH9.0 was used for antigen retrieval. 3,Secondary antibody was diluted at 1:200(room temperature, 45min).

Contact information

Orders: order@immunoway.com
 Support: tech@immunoway.com
 Telephone: 877-594-3616 (Toll Free), 408-747-0185
 Website: <http://www.immunoway.com>
 Address: 2200 Ringwood Ave San Jose, CA 95131 USA



Please scan the QR code to access additional product information:
ANT4 Rabbit pAb