

Anoctamin-9 Rabbit pAb

CatalogNo: YT0240

Key Features

Host Species

- Rabbit

Reactivity

- Human, Mouse

Applications

- IHC, IF, ELISA

MW

- 90kD (Calculated)

Isotype

- IgG

Recommended Dilution Ratios

IHC 1:100-1:300

IF 1:200-1:1000

ELISA 1:5000

Not yet tested in other applications.

Storage

Storage*

-15°C to -25°C/1 year (Do not lower than -25°C)

Formulation

Liquid in PBS containing 50% glycerol, 0.5% BSA and 0.02% sodium azide.

Basic Information

Clonality

Polyclonal

Immunogen Information

Immunogen

The antiserum was produced against synthesized peptide derived from human TM16J. AA range: 481-530

Specificity

Anoctamin-9 Polyclonal Antibody detects endogenous levels of Anoctamin-9 protein.

Target Information

Gene name ANO9

Protein Name Anoctamin-9

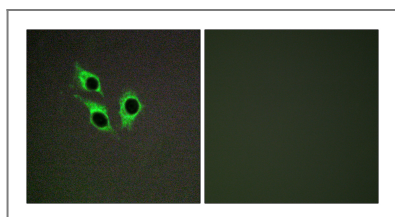
Organism	Gene ID	UniProt ID
Human	338440 ;	A1A5B4 ;
Mouse		P86044 ;

Cellular Localization Cell membrane ; Multi-pass membrane protein . Shows predominantly an intracellular localization with a weak expression in the cell membrane.

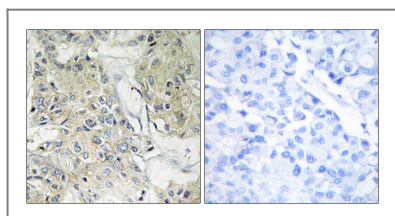
Tissue specificity Salivary gland,Spleen,Thymus,

Function Function:May act as a calcium-activated chloride channel.,sequence Caution:Intron retention.,similarity:Belongs to the anoctamin family.,

| Validation Data



Immunofluorescence analysis of HepG2 cells, using TM16J Antibody. The picture on the right is blocked with the synthesized peptide.



Immunohistochemistry analysis of paraffin-embedded human breast carcinoma tissue, using TM16J Antibody. The picture on the right is blocked with the synthesized peptide.

| Contact information

Orders: order@immunoway.com
Support: tech@immunoway.com
Telephone: 877-594-3616 (Toll Free), 408-747-0185
Website: <http://www.immunoway.com>
Address: 2200 Ringwood Ave San Jose, CA 95131 USA



Please scan the QR code to access additional product information:
Anoctamin-9 Rabbit pAb