

## ANKT Rabbit pAb

CatalogNo: YT0233

### Key Features

#### Host Species

- Rabbit

#### Reactivity

- Human, Mouse

#### Applications

- WB, ELISA

#### MW

- 49kD (Observed)

#### Isotype

- IgG

### Storage

**Storage\*** -15°C to -25°C/1 year (Do not lower than -25°C)

**Formulation** Liquid in PBS containing 50% glycerol, 0.5% BSA and 0.02% sodium azide.

### Recommended Dilution Ratios

**WB 1:500-1:2000**

**ELISA 1:20000**

**Not yet tested in other applications.**

### Basic Information

**Clonality** Polyclonal

### Immunogen Information

**Immunogen** The antiserum was produced against synthesized peptide derived from human NUSAP1. AA range:392-441

**Specificity** ANKT Polyclonal Antibody detects endogenous levels of ANKT protein.

### Target Information

**Gene name** NUSAP1

**Protein Name** Nucleolar and spindle-associated protein 1

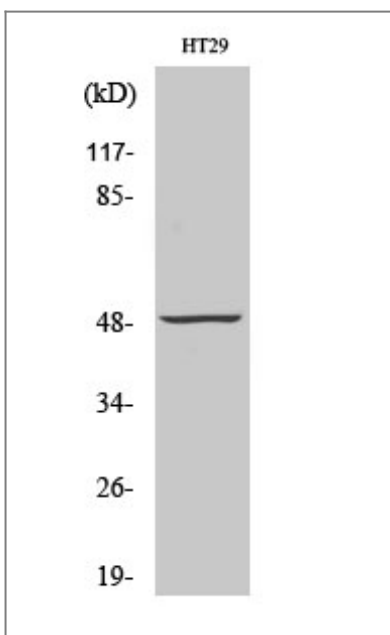
Organism	Gene ID	UniProt ID
Human	<a href="#">51203</a> ;	<a href="#">Q9BXS6</a> ;
Mouse		<a href="#">Q9ERH4</a> ;

**Cellular Localization** Cytoplasm . Nucleus, nucleolus . Cytoplasm, cytoskeleton, spindle . Chromosome . Found in the cytoplasm and nucleolus during interphase and redistributes to the mitotic spindle in prometaphase (By similarity). Localizes to the mitotic spindle during anaphase and telophase then disappears from around the chromosomes during cytokinesis (By similarity). Localizes to multiple distinct regions of chromosomes throughout mitosis. .

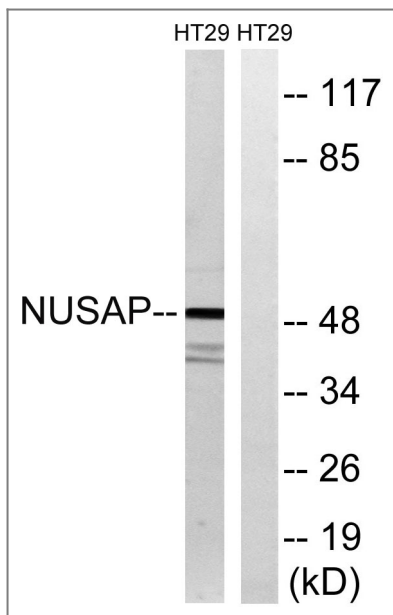
**Tissue specificity** Bone marrow,Cervix,Epithelium,Fetal liver,Liver,Lung,Lymph,

**Function** Domain:The KEN box is required for the FZR1-dependent degradation of this protein subsequent to ubiquitination.,Function:Microtubule-associated protein with the capacity to bundle and stabilize microtubules (By similarity). May associate with chromosomes and promote the organization of mitotic spindle microtubules around them.,PTM:Phosphorylated upon DNA damage, probably by ATM or ATR.,PTM:Ubiquitinated. Ubiquitination by FZR1 may lead to proteasome-dependent degradation of this protein.,similarity:Belongs to the NUSAP family.,subcellular location:Found in the cytoplasm and nucleolus during interphase and redistributes to the mitotic spindle in prometaphase (By similarity). Localizes to the mitotic spindle during anaphase and telophase then disappears from around the chromosomes during cytokinesis (By similarity). Localizes to multiple distinct regions of chromosomes throughout mitosis.,subunit:Interacts with DNA and microtubules. Microtubule bundling is inhibited by IPO7, KPNA2 and KPNB1 while association with DNA is also inhibited by IPO7 and KPNA2.,

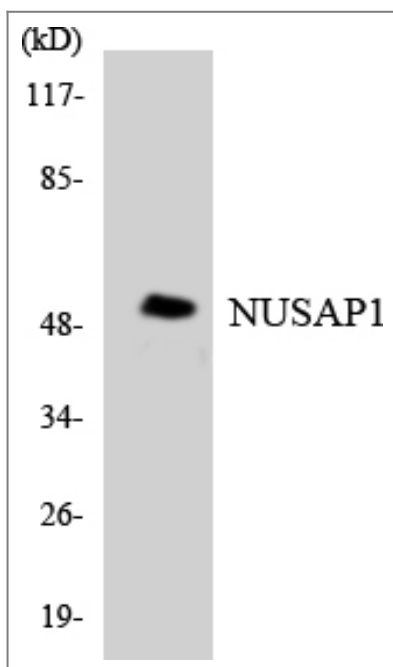
## Validation Data



Western Blot analysis of various cells using ANKT Polyclonal Antibody



Western blot analysis of lysates from HT-29 cells, using NUSAP1 Antibody. The lane on the right is blocked with the synthesized peptide.



Western blot analysis of the lysates from HT-29 cells using NUSAP1 antibody.

## Contact information

Orders: [order@immunoway.com](mailto:order@immunoway.com)  
 Support: [tech@immunoway.com](mailto:tech@immunoway.com)  
 Telephone: 877-594-3616 (Toll Free), 408-747-0185  
 Website: <http://www.immunoway.com>  
 Address: 2200 Ringwood Ave San Jose, CA 95131 USA



Please scan the QR code to access additional product information:  
**ANKT Rabbit pAb**