

## AMPD1 Rabbit pAb

CatalogNo: YT0211

### Key Features

#### Host Species

- Rabbit

#### Reactivity

- Human, Mouse, Rat

#### Applications

- IHC, IF, ELISA

#### MW

- 86kD (Calculated)

#### Isotype

- IgG

### Recommended Dilution Ratios

IHC 1:100-1:300

ELISA 1:40000

IF 1:50-200

### Storage

#### Storage\*

-15°C to -25°C/1 year(Do not lower than -25°C)

#### Formulation

Liquid in PBS containing 50% glycerol, 0.5% BSA and 0.02% sodium azide.

### Basic Information

#### Clonality

Polyclonal

### Immunogen Information

#### Immunogen

The antiserum was produced against synthesized peptide derived from human AMPD1. AA range:261-310

#### Specificity

AMPD1 Polyclonal Antibody detects endogenous levels of AMPD1 protein.

### Target Information

**Gene name** AMPD1

**Protein Name** AMP deaminase 1

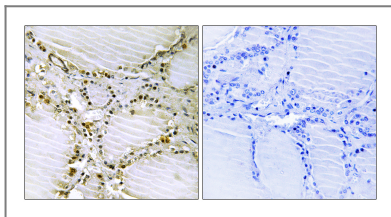
Organism	Gene ID	UniProt ID
Human	<a href="#">270;</a>	<a href="#">P23109;</a>
Mouse		<a href="#">Q3V1D3;</a>
Rat	<a href="#">25028;</a>	<a href="#">P10759;</a>

**Cellular Localization** cytosol,

**Tissue specificity** Skeletal muscle,

**Function** Catalytic activity:AMP + H(2)O = IMP + NH(3).,Disease:Defects in AMPD1 are the cause of adenosine monophosphate deaminase deficiency muscle type (AMPDDM) [MIM:102770]. AMPDDM is a metabolic disorder resulting in exercise-related myopathy. It is characterized by exercise-induced muscle aches, cramps, and early fatigue.,Function:AMP deaminase plays a critical role in energy metabolism.,pathway:Purine metabolism; IMP biosynthesis via salvage pathway; IMP from AMP: step 1/1.,similarity:Belongs to the adenosine and AMP deaminases family.,subunit:Homotetramer.,tissue specificity:Three isoforms are present in mammals: AMP deaminase 1 is the predominant form in skeletal muscle; AMP deaminase 2 predominates in smooth muscle, non-muscle tissue, embryonic muscle and undifferentiated myoblasts; AMP deaminase 3 is found in erythrocytes.,

## Validation Data



Immunohistochemistry analysis of paraffin-embedded human thyroid gland tissue, using AMPD1 Antibody. The picture on the right is blocked with the synthesized peptide.

## Contact information

Orders: [order@immunoway.com](mailto:order@immunoway.com)  
Support: [tech@immunoway.com](mailto:tech@immunoway.com)  
Telephone: 877-594-3616 (Toll Free), 408-747-0185  
Website: <http://www.immunoway.com>  
Address: 2200 Ringwood Ave San Jose, CA 95131 USA



Please scan the QR code to access additional product information:  
**AMPD1 Rabbit pAb**

