

ALX3 Rabbit pAb

CatalogNo: YT0207

| Key Features

Host Species

- Rabbit

Reactivity

- Human, Mouse, Rat

Applications

- WB, IHC, IF, ELISA

MW

- 36kD (Observed)

Isotype

- IgG

| Recommended Dilution Ratios

WB 1:500-1:2000

IHC 1:100-1:300

IF 1:200-1:1000

ELISA 1:20000

Not yet tested in other applications.

| Storage

Storage*

-15°C to -25°C/1 year (Do not lower than -25°C)

Formulation

Liquid in PBS containing 50% glycerol, 0.5% BSA and 0.02% sodium azide.

| Basic Information

Clonality

Polyclonal

| Immunogen Information

Immunogen

The antiserum was produced against synthesized peptide derived from human ALX3. AA range: 171-220

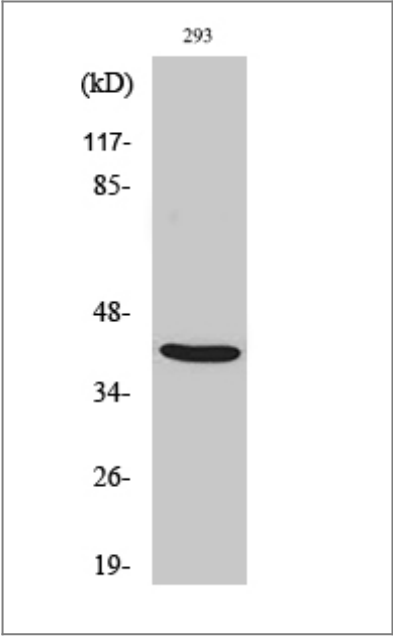
Specificity

ALX3 Polyclonal Antibody detects endogenous levels of ALX3 protein.

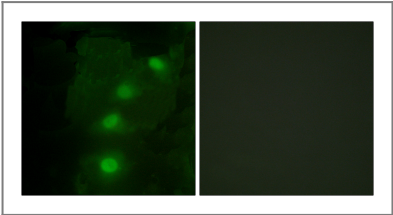
| Target Information

Gene name	ALX3		
Protein Name	Homeobox protein aristaless-like 3		
	Organism	Gene ID	UniProt ID
	Human	257 ;	O95076 ;
	Mouse	11694 ;	O70137 ;
Cellular Localization	Nucleus .		
Tissue specificity	Brain,Neuroblastoma,		
Function	Function:Transcriptional regulator with a possible role in patterning of mesoderm during development.,similarity:Belongs to the paired homeobox family.,similarity:Contains 1 homeobox DNA-binding domain.,		

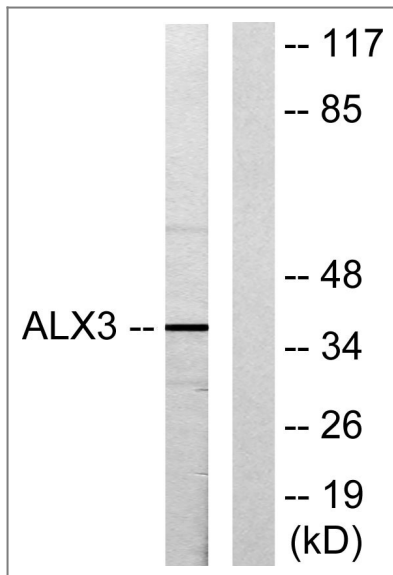
| Validation Data



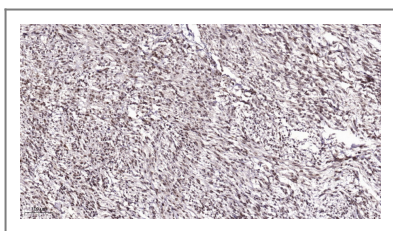
Western Blot analysis of various cells using ALX3 Polyclonal Antibody cells nucleus extracted by Minute TM Cytoplasmic and Nuclear Fractionation kit (SC-003,Inventbiotech,MN,USA).



Immunofluorescence analysis of HeLa cells, using ALX3 Antibody. The picture on the right is blocked with the synthesized peptide.



Western blot analysis of lysates from 293 cells, using ALX3 Antibody. The lane on the right is blocked with the synthesized peptide.



Immunohistochemical analysis of paraffin-embedded human Colon cancer. 1, Antibody was diluted at 1:200(4° overnight). 2, Tris-EDTA,pH9.0 was used for antigen retrieval. 3,Secondary antibody was diluted at 1:200(room temperature, 45min).

Contact information

Orders: order@immunoway.com
 Support: tech@immunoway.com
 Telephone: 877-594-3616 (Toll Free), 408-747-0185
 Website: <http://www.immunoway.com>
 Address: 2200 Ringwood Ave San Jose, CA 95131 USA



Please scan the QR code to access additional product information:
ALX3 Rabbit pAb

For Research Use Only. Not for Use in Diagnostic Procedures.

[Antibody](#) | [ELISA Kits](#) | [Protein](#) | [Reagents](#)