

# Aldose Reductase Rabbit pAb

CatalogNo: YT0194

Orthogonal Validated 

## Key Features

### Host Species

- Rabbit

### Reactivity

- Human,Rat

### Applications

- WB,IHC,IF,ELISA

### MW

- 36kD (Observed)

### Isotype

- IgG

## Recommended Dilution Ratios

**WB 1:500-1:2000****IHC 1:100-1:300****IF 1:200-1:1000****ELISA 1:20000****Not yet tested in other applications.**

## Storage

### Storage\*

-15°C to -25°C/1 year(Do not lower than -25°C)

### Formulation

Liquid in PBS containing 50% glycerol, 0.5% BSA and 0.02% sodium azide.

## Basic Information

### Clonality

Polyclonal

## Immunogen Information

### Immunogen

The antiserum was produced against synthesized peptide derived from human AKR1B1. AA range:241-290

### Specificity

Aldose Reductase Polyclonal Antibody detects endogenous levels of Aldose Reductase protein.

## Target Information

Gene name AKR1B1

Protein Name Aldose reductase

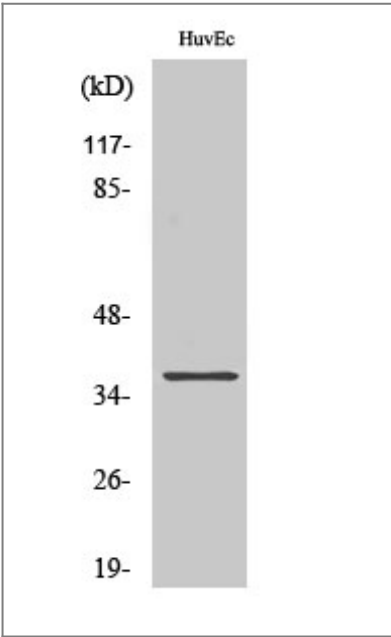
Organism	Gene ID	UniProt ID
Human	<a href="#">231</a> ;	<a href="#">P15121</a> ;
Mouse	<a href="#">11677</a> ;	<a href="#">P45376</a> ;
Rat	<a href="#">24192</a> ;	<a href="#">P07943</a> ;

Cellular Localization Cytoplasm.

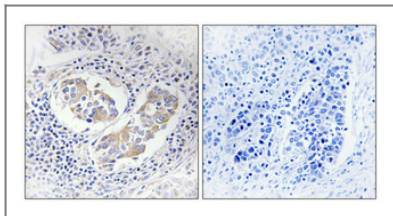
Tissue specificity Highly expressed in embryonic epithelial cells (EUE) in response to osmotic stress.

Function Catalytic activity:Alditol + NAD(P)(+) = aldose + NAD(P)H.,Disease:In diabetes and galactosemia, increased AR activity leads to high levels of sorbitol and galactitol, respectively, in the cells of many tissues. Accumulation of sugar alcohols has been shown to cause osmotic cataracts in the lens. AR is also thought to play a key role in diabetic complications of three other target tissues, namely, nerve, kidney and retina.,enzyme regulation:Cys-299 may regulate the kinetic and inhibition properties of the enzyme, but does not participate in catalysis.,Function:Catalyzes the NADPH-dependent reduction of a wide variety of carbonyl-containing compounds to their corresponding alcohols with a broad range of catalytic efficiencies.,similarity:Belongs to the aldo/keto reductase family.,subunit:Monomer.,tissue specificity:Highly expressed in embryonic epithelial cells (EUE) in response to osmotic stress.,

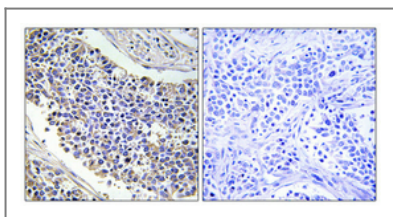
## Validation Data



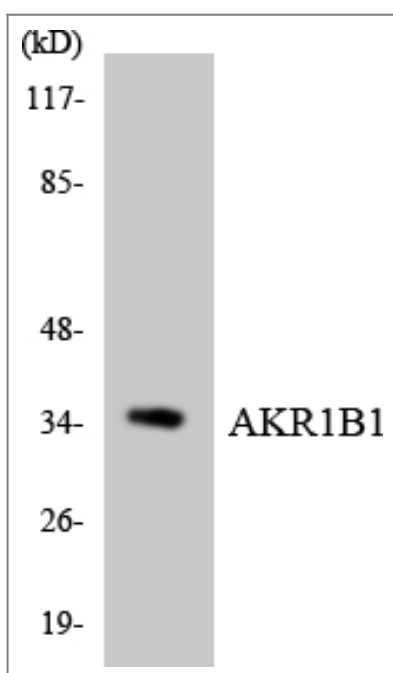
Western Blot analysis of HuvEc cells using Aldose Reductase Polyclonal Antibody



Immunohistochemical analysis of paraffin-embedded Human lung cancer. Antibody was diluted at 1:100(4° overnight). High-pressure and temperature Tris-EDTA,pH8.0 was used for antigen retrieval. Negative contrl (right) obtained from antibody was pre-absorbed by immunogen peptide.



Immunohistochemical analysis of paraffin-embedded Human lung cancer. Antibody was diluted at 1:100(4° overnight). High-pressure and temperature Tris-EDTA,pH8.0 was used for antigen retrieval. Negative contrl (right) obtained from antibody was pre-absorbed by immunogen peptide.



Western blot analysis of the lysates from HUVECcells using AKR1B1 antibody.

## Contact information

Orders: [order@immunoway.com](mailto:order@immunoway.com)  
 Support: [tech@immunoway.com](mailto:tech@immunoway.com)  
 Telephone: 877-594-3616 (Toll Free), 408-747-0185  
 Website: <http://www.immunoway.com>  
 Address: 2200 Ringwood Ave San Jose, CA 95131 USA



Please scan the QR code to access additional product information:  
**Aldose Reductase**  
**Rabbit pAb**

For Research Use Only. Not for Use in Diagnostic Procedures.

[Antibody](#) | [ELISA Kits](#) | [Protein](#) | [Reagents](#)