

Aldolase B Rabbit pAb

CatalogNo: YT0192

Key Features

Host Species

- Rabbit

Reactivity

- Human, Mouse, Rat

Applications

- WB, IHC, IF, ELISA

MW

- 39kD (Observed)

Isotype

- IgG

Recommended Dilution Ratios

WB 1:500-1:2000

IHC 1:100-1:300

ELISA 1:20000

IF 1:50-200

Storage

Storage*

-15°C to -25°C/1 year (Do not lower than -25°C)

Formulation

Liquid in PBS containing 50% glycerol, 0.5% BSA and 0.02% sodium azide.

Basic Information

Clonality

Polyclonal

Immunogen Information

Immunogen

The antiserum was produced against synthesized peptide derived from human ALDOB. AA range: 111-160

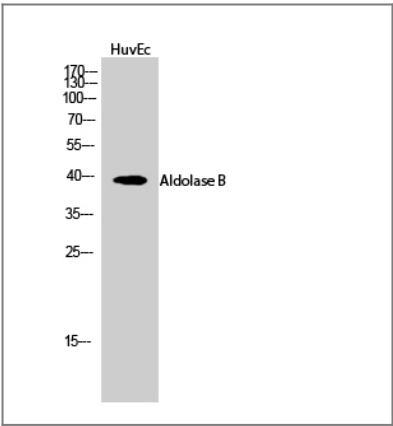
Specificity

Aldolase B Polyclonal Antibody detects endogenous levels of Aldolase B protein.

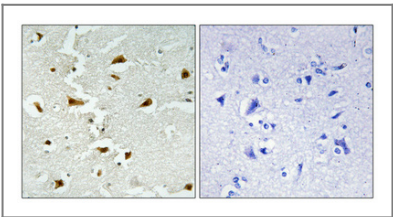
Target Information

Gene name	ALDOB		
Protein Name	Fructose-bisphosphate aldolase B		
	Organism	Gene ID	UniProt ID
	Human	229;	P05062;
	Mouse	230163;	Q91Y97;
	Rat		P00884;
Cellular Localization	Cytoplasm, cytoskeleton, microtubule organizing center, centrosome, centriolar satellite .		
Tissue specificity	Kidney,		
Function	Catalytic activity:D-fructose 1,6-bisphosphate = glycerone phosphate + D-glyceraldehyde 3-phosphate.,Disease:Defects in ALDOB are the cause of hereditary fructose intolerance (HFI) [MIM:229600]. HFI is an autosomal recessive disease that results in an inability to metabolize fructose and related sugars. Complete exclusion of fructose results in dramatic recovery; however, if not treated properly, HFI subjects suffer episodes of hypoglycemia, general ill condition, and risk of death the remainder of life.,miscellaneous:In vertebrates, three forms of this ubiquitous glycolytic enzyme are found, aldolase A in muscle, aldolase B in liver and aldolase C in brain.,pathway:Carbohydrate degradation; glycolysis; D-glyceraldehyde 3-phosphate and glycerone phosphate from D-glucose: step 4.,pathway:Carbohydrate degradation; glycolysis; D-glyceraldehyde 3-phosphate and glycerone phosphate from D-glucose: step 4/4.,similarity:Belongs to the class I fructose-bisphosphate aldolase family.,subunit:Homotetramer.,		

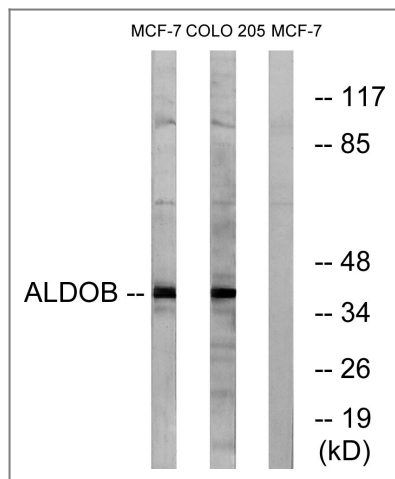
Validation Data



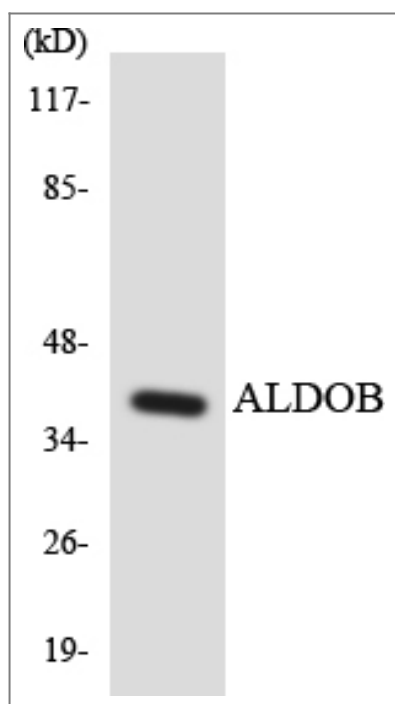
Western Blot analysis of HuvEc cells using Aldolase B Polyclonal Antibody



Immunohistochemical analysis of paraffin-embedded Human brain. Antibody was diluted at 1:100(4° overnight). High-pressure and temperature Tris-EDTA,pH8.0 was used for antigen retrieval. Negative contrl (right) obtaned from antibody was pre-absorbed by immunogen peptide.



Western blot analysis of lysates from MCF-7 and HUVEC cells, using ALDOB Antibody. The lane on the right is blocked with the synthesized peptide.



Western blot analysis of the lysates from 293 cells using ALDOB antibody.

Contact information

Orders: order@immunoway.com
 Support: tech@immunoway.com
 Telephone: 877-594-3616 (Toll Free), 408-747-0185
 Website: <http://www.immunoway.com>
 Address: 2200 Ringwood Ave San Jose, CA 95131 USA



Please scan the QR code
 to access additional
 product information:
**Aldolase B Rabbit
 pAb**