

AKAP 220 Rabbit pAb

CatalogNo: YT0165

Key Features

Host Species

- Rabbit

Reactivity

- Human,Rat

Applications

- IHC,IF,ELISA

MW

- 211kD (Calculated)

Isotype

- IgG

Recommended Dilution Ratios

IHC 1:100-1:300

IF 1:200-1:1000

ELISA 1:10000

Not yet tested in other applications.

Storage

Storage* -15°C to -25°C/1 year(Do not lower than -25°C)

Formulation Liquid in PBS containing 50% glycerol, 0.5% BSA and 0.02% sodium azide.

Basic Information

Clonality Polyclonal

Immunogen Information

Immunogen The antiserum was produced against synthesized peptide derived from human AKAP11. AA range:1761-1810

Specificity AKAP 220 Polyclonal Antibody detects endogenous levels of AKAP 220 protein.

Target Information

Gene name AKAP11

Protein Name A-kinase anchor protein 11

Organism

Human

Gene ID

[11215;](#)

UniProt ID

[Q9UKA4;](#)

**Cellular
Localization**

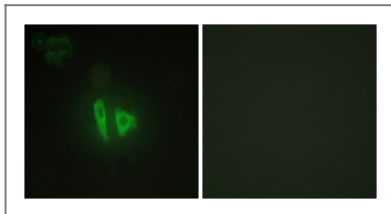
Cytoplasm. Cytoplasm, cytoskeleton, microtubule organizing center, centrosome. Cytoplasmic in premeiotic pachytene spermatocytes and in the centrosome of developing postmeiotic germ cells, while a midpiece/centrosome localization was found in elongating spermatocytes and mature sperm.

Tissue specificity Expressed in heart, brain, lung, liver, kidney, testis and ovary. Weakly expressed in skeletal muscle, pancreas and spleen.

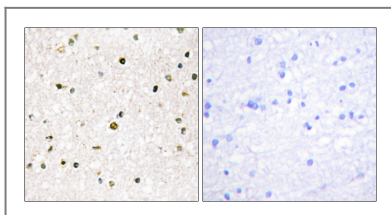
Function

Domain:RII-alpha binding site, predicted to form an amphipathic helix, could participate in protein-protein interactions with a complementary surface on the R-subunit dimer.,Function:Binds to type II regulatory subunits of protein kinase A and anchors/targets them.,similarity:Belongs to the AKAP110 family.,subcellular location:Cytoplasmic in premeiotic pachytene spermatocytes and in the centrosome of developing postmeiotic germ cells, while a midpiece/centrosome localization was found in elongating spermatocytes and mature sperm.,tissue specificity:Expressed in heart, brain, lung, liver, kidney, testis and ovary. Weakly expressed in skeletal muscle, pancreas and spleen.,

Validation Data



Immunofluorescence analysis of HepG2 cells, using AKAP11 Antibody. The picture on the right is blocked with the synthesized peptide.



Immunohistochemistry analysis of paraffin-embedded human brain tissue, using AKAP11 Antibody. The picture on the right is blocked with the synthesized peptide.

Contact information

Orders: order@immunoway.com
Support: tech@immunoway.com
Telephone: 877-594-3616 (Toll Free), 408-747-0185
Website: <http://www.immunoway.com>
Address: 2200 Ringwood Ave San Jose, CA 95131 USA



Please scan the QR code to access additional product information:
AKAP 220 Rabbit pAb

