

AKAP 2 Rabbit pAb

CatalogNo: YT0164

Key Features

Host Species

- Rabbit

Reactivity

- Human

Applications

- WB,ELISA

MW

- 96kD (Observed)

Isotype

- IgG

Recommended Dilution Ratios

WB 1:500-1:2000

ELISA 1:20000

Not yet tested in other applications.

Storage

Storage*

-15°C to -25°C/1 year(Do not lower than -25°C)

Formulation

Liquid in PBS containing 50% glycerol, 0.5% BSA and 0.02% sodium azide.

Basic Information

Clonality

Polyclonal

Immunogen Information

Immunogen

The antiserum was produced against synthesized peptide derived from human AKAP2. AA range:71-120

Specificity

AKAP 2 Polyclonal Antibody detects endogenous levels of AKAP 2 protein.

Target Information

Gene name AKAP2

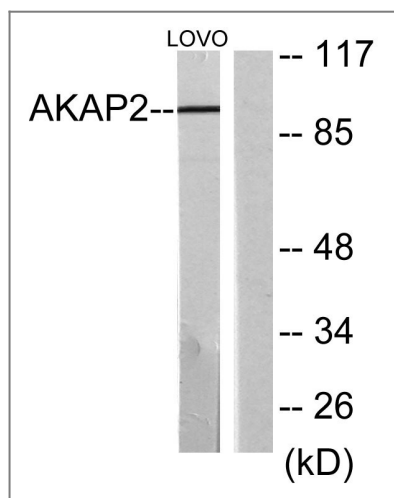
Protein Name A-kinase anchor protein 2

Organism	Gene ID	UniProt ID
Human	445815 ; 11217 ;	Q9Y2D5 ;
Mouse		O54931 ;

Tissue specificity Brain,Epithelium,Hippocampus,Liver,Muscle,Small intestine,Trachea,

Function Caution:It is uncertain whether Met-1 or Met-3 is the initiator.,Function:Binds to regulatory subunit (RII) of protein kinase A. May be involved in establishing polarity in signaling systems or in integrating PKA-RII isoforms with downstream effectors to capture, amplify and focus diffuse, trans-cellular signals carried by cAMP.,miscellaneous:Can be differentially expressed as a natural AKAP2-PALM2 chimeric protein.,similarity:Belongs to the paralemmin family.,tissue specificity:Expressed in infantile heart and muscle, and fibroblasts.,

Validation Data



Western blot analysis of lysates from LOVO cells, using AKAP2 Antibody. The lane on the right is blocked with the synthesized peptide.

Contact information

Orders: order@immunoway.com
Support: tech@immunoway.com
Telephone: 877-594-3616 (Toll Free), 408-747-0185
Website: <http://www.immunoway.com>
Address: 2200 Ringwood Ave San Jose, CA 95131 USA



Please scan the QR code to access additional product information:
AKAP 2 Rabbit pAb