

## AKAP 110 Rabbit pAb

CatalogNo: YT0160

### Key Features

#### Host Species

- Rabbit

#### Reactivity

- Human, Mouse

#### Applications

- IF, ELISA

#### MW

- 95kD (Calculated)

#### Isotype

- IgG

### Recommended Dilution Ratios

**IF 1:200-1:1000**

**ELISA 1:10000**

**Not yet tested in other applications**

### Storage

#### Storage\*

-15°C to -25°C/1 year (Do not lower than -25°C)

#### Formulation

Liquid in PBS containing 50% glycerol, 0.5% BSA and 0.02% sodium azide.

### Basic Information

#### Clonality

Polyclonal

### Immunogen Information

#### Immunogen

The antiserum was produced against synthesized peptide derived from human AKAP3. AA range: 191-240

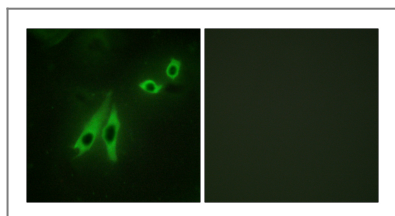
#### Specificity

AKAP 110 Polyclonal Antibody detects endogenous levels of AKAP 110 protein.

### Target Information

<b>Gene name</b>	AKAP3		
<b>Protein Name</b>	A-kinase anchor protein 3		
	<b>Organism</b>	<b>Gene ID</b>	<b>UniProt ID</b>
	Human	<a href="#">10566;</a>	<a href="#">O75969;</a>
	Mouse	<a href="#">11642;</a>	<a href="#">O88987;</a>
<b>Cellular Localization</b>	Cytoplasmic vesicle, secretory vesicle, acrosome . Ribs of the fibrous sheath in the principal piece of the sperm tail. Dorsal margin of the acrosomal segment.		
<b>Tissue specificity</b>	Testis specific; only expressed in spermatids.		
<b>Function</b>	Domain:RII-binding site, predicted to form an amphipathic helix, could participate in protein-protein interactions with a complementary surface on the R-subunit dimer.,Function:May function as a regulator of both motility- and head-associated functions such as capacitation and the acrosome reaction.,PTM:Phosphorylated on tyrosine residues.,similarity:Belongs to the AKAP110 family.,subcellular location:Ribs of the fibrous sheath in the principal piece of the sperm tail. Dorsal margin of the acrosomal segment.,subunit:Interacts with ROPN1 AND ROPN1L.,tissue specificity:Testis specific; only expressed in spermatids.,		

## Validation Data



Immunofluorescence analysis of NIH/3T3 cells, using AKAP3 Antibody. The picture on the right is blocked with the synthesized peptide.

## Contact information

Orders: [order@immunoway.com](mailto:order@immunoway.com)  
 Support: [tech@immunoway.com](mailto:tech@immunoway.com)  
 Telephone: 877-594-3616 (Toll Free), 408-747-0185  
 Website: <http://www.immunoway.com>  
 Address: 2200 Ringwood Ave San Jose, CA 95131 USA



Please scan the QR code to access additional product information:  
**AKAP 110 Rabbit pAb**