

AK5 Rabbit pAb

CatalogNo: YT0157

| Key Features

Host Species

- Rabbit

Reactivity

- Human, Mouse

Applications

- WB, IHC, IF, ELISA

MW

- 25kD (Observed)

Isotype

- IgG

| Recommended Dilution Ratios

WB 1:500-1:2000

IHC 1:100-1:300

ELISA 1:5000

IF 1:50-200

| Storage

Storage*

-15°C to -25°C/1 year (Do not lower than -25°C)

Formulation

Liquid in PBS containing 50% glycerol, 0.5% BSA and 0.02% sodium azide.

| Basic Information

Clonality

Polyclonal

| Immunogen Information

Immunogen

The antiserum was produced against synthesized peptide derived from human AK5. AA range: 391-440

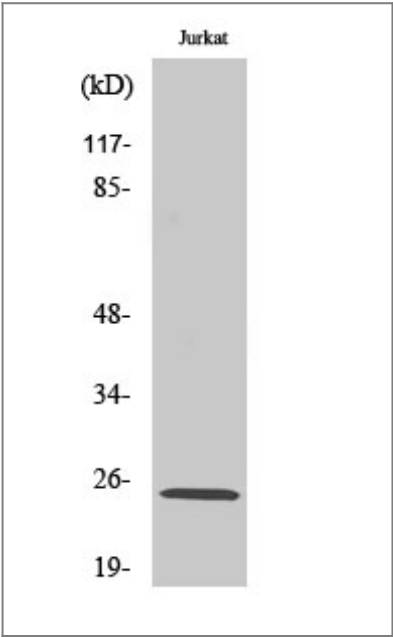
Specificity

AK5 Polyclonal Antibody detects endogenous levels of AK5 protein.

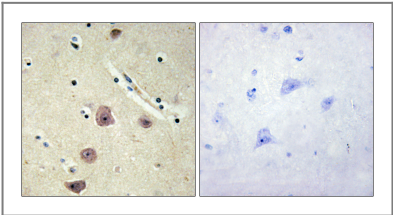
| Target Information

Gene name	AK5		
Protein Name	Adenylate kinase isoenzyme 5		
	Organism	Gene ID	UniProt ID
	Human	26289;	Q9Y6K8;
	Mouse	229949;	Q920P5;
Cellular Localization	Cytoplasm .		
Tissue specificity	Brain specific.		
Function	Catalytic activity:ATP + AMP = 2 ADP.,Function:Active on AMP and dAMP with ATP as a donor. When GTP is used as phosphate donor, the enzyme phosphorylates AMP, CMP, and to a small extent dCMP.,similarity:Belongs to the adenylate kinase family.,subunit:Monomer.,tissue specificity:Brain specific.,		

| Validation Data



Western Blot analysis of various cells using AK5 Polyclonal Antibody



Immunohistochemistry analysis of paraffin-embedded human brain tissue, using AK5 Antibody. The picture on the right is blocked with the synthesized peptide.

| Contact information

Orders: order@immunoway.com
Support: tech@immunoway.com
Telephone: 877-594-3616 (Toll Free), 408-747-0185
Website: http://www.immunoway.com
Address: 2200 Ringwood Ave San Jose, CA 95131 USA



Please scan the QR code
to access additional
product information:
AK5 Rabbit pAb

For Research Use Only. Not for Use in Diagnostic Procedures.

[Antibody](#) | [ELISA Kits](#) | [Protein](#) | [Reagents](#)