

AIP4 Rabbit pAb

CatalogNo: YT0152

| Key Features

Host Species

- Rabbit

Reactivity

- Human, Mouse

Applications

- WB, ELISA

MW

- 103kD (Observed)

Isotype

- IgG

| Recommended Dilution Ratios

WB 1:500-1:2000

ELISA 1:40000

Not yet tested in other applications.

| Storage

Storage*

-15°C to -25°C/1 year (Do not lower than -25°C)

Formulation

Liquid in PBS containing 50% glycerol, 0.5% BSA and 0.02% sodium azide.

| Basic Information

Clonality

Polyclonal

| Immunogen Information

Immunogen

The antiserum was produced against synthesized peptide derived from human ITCH. AA range: 386-435

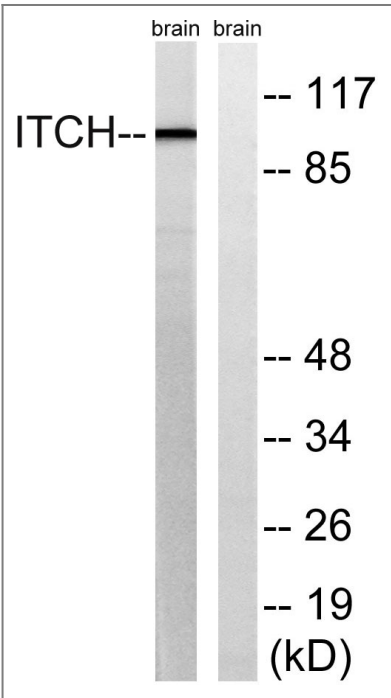
Specificity

AIP4 Polyclonal Antibody detects endogenous levels of AIP4 protein.

| Target Information

Gene name	ITCH		
Protein Name	E3 ubiquitin-protein ligase Itchy homolog		
	Organism	Gene ID	UniProt ID
	Human	83737 ;	Q96J02 ;
	Mouse	16396 ;	Q8C863 ;
Cellular Localization	Cell membrane ; Peripheral membrane protein ; Cytoplasmic side . Cytoplasm . Nucleus . Early endosome membrane ; Peripheral membrane protein ; Cytoplasmic side . Endosome membrane ; Peripheral membrane protein ; Cytoplasmic side . May be recruited to exosomes by NDFIP1 (PubMed:18819914). Localizes to plasma membrane upon CXCL12 stimulation where it co-localizes with CXCL4 (PubMed:14602072). Localization to early endosomes is increased upon CXCL12 stimulation where it co-localizes with DTX3L and CXCL4 (PubMed:24790097). .		
Tissue specificity	Widely expressed.		
Function	Function:E3 ubiquitin-protein ligase which accepts ubiquitin from an E2 ubiquitin-conjugating enzyme in the form of a thioester and then directly transfers the ubiquitin to targeted substrates. Regulates the transcriptional activity of several transcription factors, and probably plays an important role in the regulation of immune response.,pathway:Protein modification; protein ubiquitination.,PTM:Phosphorylated on tyrosine residues.,similarity:Contains 1 C2 domain.,similarity:Contains 1 HECT (E6AP-type E3 ubiquitin-protein ligase) domain.,similarity:Contains 4 WW domains.,subunit:Interacts via its WW domains with DRPLA, NFE2 and CBLC. Interacts with Epstein-Barr virus LMP2A. Interacts with NOTCH1, OCLN, JUN and JUNB. Interacts with NDFIP1 in vitro (By similarity). Interacts with ARHGEF7.,tissue specificity:Widely expressed.,		

Validation Data



Western blot analysis of lysates from mouse brain, using ITCH Antibody. The lane on the right is blocked with the synthesized peptide.

| Contact information

Orders: order@immunoway.com
Support: tech@immunoway.com
Telephone: 877-594-3616 (Toll Free), 408-747-0185
Website: <http://www.immunoway.com>
Address: 2200 Ringwood Ave San Jose, CA 95131 USA



Please scan the QR code
to access additional
product information:
AIP4 Rabbit pAb

For Research Use Only. Not for Use in Diagnostic Procedures.

[Antibody](#) | [ELISA Kits](#) | [Protein](#) | [Reagents](#)