

## AIFL Rabbit pAb

CatalogNo: YT0148

### Key Features

#### Host Species

- Rabbit

#### Reactivity

- Human, Mouse

#### Applications

- WB, IHC, IF, ELISA

#### MW

- 67kD (Observed)

#### Isotype

- IgG

### Recommended Dilution Ratios

**WB 1:500-1:2000**

**IHC 1:100-1:300**

**IF 1:200-1:1000**

**ELISA 1:40000**

**Not yet tested in other applications.**

### Storage

#### Storage\*

-15°C to -25°C/1 year (Do not lower than -25°C)

#### Formulation

Liquid in PBS containing 50% glycerol, 0.5% BSA and 0.02% sodium azide.

### Basic Information

#### Clonality

Polyclonal

### Immunogen Information

#### Immunogen

The antiserum was produced against synthesized peptide derived from human AIFM3. AA range: 10-59

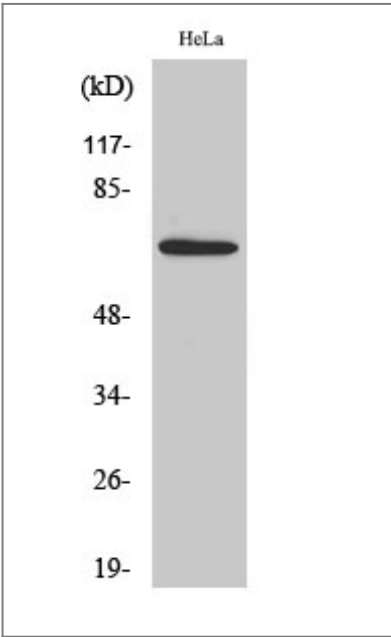
#### Specificity

AIFL Polyclonal Antibody detects endogenous levels of AIFL protein.

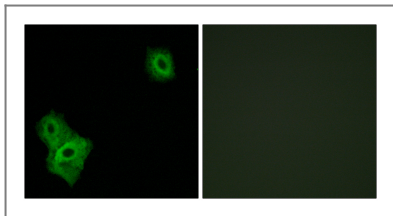
## Target Information

Gene name	AIFM3		
Protein Name	Apoptosis-inducing factor 3		
	Organism	Gene ID	UniProt ID
	Human	<a href="#">150209</a> ;	<a href="#">Q96NN9</a> ;
	Mouse	<a href="#">72168</a> ;	<a href="#">Q3TY86</a> ;
Cellular Localization	Mitochondrion . Does not translocate to the nucleus upon induction of apoptosis.		
Tissue specificity	Ubiquitous. Expressed in bone marrow, cerebral cortex, liver, ovary, thymus, thyroid gland and tongue (at protein level).		
Function	Domain:The Rieske domain induces apoptosis.,Function:Induces apoptosis through a caspase dependent pathway. Reduces mitochondrial membrane potential.,similarity:Belongs to the FAD-dependent oxidoreductase family.,similarity:Contains 1 Rieske domain.,subcellular location:Does not translocate to the nucleus upon induction of apoptosis.,tissue specificity:Ubiquitous. Expressed in bone marrow, cerebral cortex, liver, ovary, thymus, thyroid gland and tongue (at protein level).,		

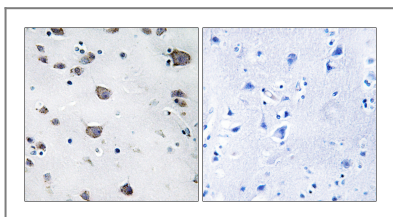
## Validation Data



Western Blot analysis of various cells using AIFL Polyclonal Antibody



Immunofluorescence analysis of A549 cells, using AIFM3 Antibody. The picture on the right is blocked with the synthesized peptide.



Immunohistochemistry analysis of paraffin-embedded human brain, using AIFM3 Antibody. The picture on the right is blocked with the synthesized peptide.

## | Contact information

Orders: [order@immunoway.com](mailto:order@immunoway.com)  
Support: [tech@immunoway.com](mailto:tech@immunoway.com)  
Telephone: 877-594-3616 (Toll Free), 408-747-0185  
Website: <http://www.immunoway.com>  
Address: 2200 Ringwood Ave San Jose, CA 95131 USA



Please scan the QR code  
to access additional  
product information:  
**AIFL Rabbit pAb**

For Research Use Only. Not for Use in Diagnostic Procedures.

[Antibody](#) | [ELISA Kits](#) | [Protein](#) | [Reagents](#)