

AGR3 Rabbit pAb

CatalogNo: YT0142

Key Features

Host Species

- Rabbit

Reactivity

- Human, Mouse

Applications

- IHC, IF, ELISA

MW

- 19kD (Calculated)

Isotype

- IgG

Recommended Dilution Ratios

IHC 1:100-1:300

IF 1:200-1:1000

ELISA 1:5000

Not yet tested in other applications.

Storage

Storage*

-15°C to -25°C/1 year (Do not lower than -25°C)

Formulation

Liquid in PBS containing 50% glycerol, 0.5% BSA and 0.02% sodium azide.

Basic Information

Clonality

Polyclonal

Immunogen Information

Immunogen

The antiserum was produced against synthesized peptide derived from human AGR3. AA range: 1-50

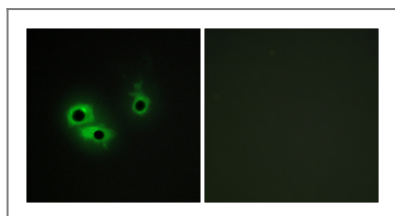
Specificity

AGR3 Polyclonal Antibody detects endogenous levels of AGR3 protein.

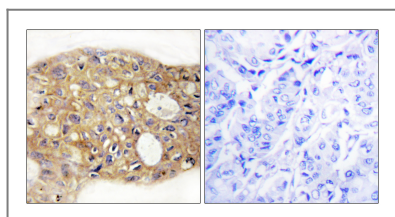
Target Information

Gene name	AGR3		
Protein Name	Anterior gradient protein 3 homolog		
	Organism	Gene ID	UniProt ID
	Human	155465;	Q8TD06;
	Mouse	403205;	Q8R3W7;
Cellular Localization	Endoplasmic reticulum . Found in the cytoplasm, which could include the endoplasmic reticulum. .		
Tissue specificity	Expressed in the lung, in the ciliated cells of the airway epithelium (PubMed:25751668). Expression increased with differentiation of airway epithelial cells (PubMed:25751668). Not detected in the mucous cells (PubMed:25751668). Expressed in ciliated cells in the oviduct (PubMed:26170690). Also detected in stomach, colon, prostate and liver (PubMed:25751668). Expressed in breast, ovary, prostate and liver cancer (PubMed:26170690). Expression is associated with the level of differentiation of breast cancer (at protein level) (PubMed:26170690).		
Function	similarity:Belongs to the AGR family.,subunit:Interacts with LYPD3 and alpha-dystroglycan.,		

Validation Data



Immunofluorescence analysis of COS7 cells, using AGR3 Antibody. The picture on the right is blocked with the synthesized peptide.



Immunohistochemistry analysis of paraffin-embedded human breast carcinoma tissue, using AGR3 Antibody. The picture on the right is blocked with the synthesized peptide.

Contact information

Orders: order@immunoway.com
 Support: tech@immunoway.com
 Telephone: 877-594-3616 (Toll Free), 408-747-0185
 Website: <http://www.immunoway.com>
 Address: 2200 Ringwood Ave San Jose, CA 95131 USA



Please scan the QR code to access additional product information:
AGR3 Rabbit pAb

