

## ADH7 Rabbit pAb

CatalogNo: YT0134

### | Key Features

#### Host Species

- Rabbit

#### Reactivity

- Human, Monkey

#### Applications

- WB, ELISA

#### MW

- 40kD (Observed)

#### Isotype

- IgG

### | Recommended Dilution Ratios

**WB 1:500-1:2000**

**ELISA 1:20000**

**Not yet tested in other applications.**

### | Storage

#### Storage\*

-15°C to -25°C/1 year(Do not lower than -25°C)

#### Formulation

Liquid in PBS containing 50% glycerol, 0.5% BSA and 0.02% sodium azide.

### | Basic Information

#### Clonality

Polyclonal

### | Immunogen Information

#### Immunogen

The antiserum was produced against synthesized peptide derived from human ADH7. AA range:211-260

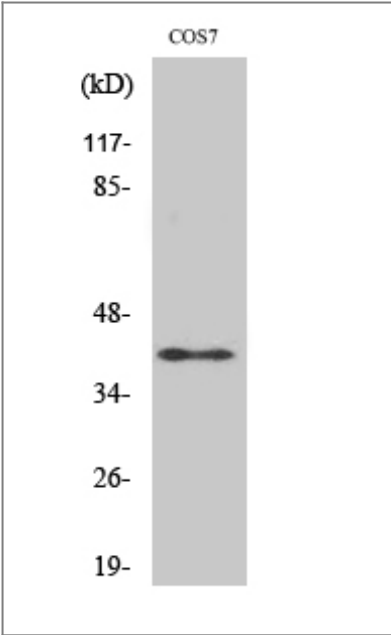
#### Specificity

ADH7 Polyclonal Antibody detects endogenous levels of ADH7 protein.

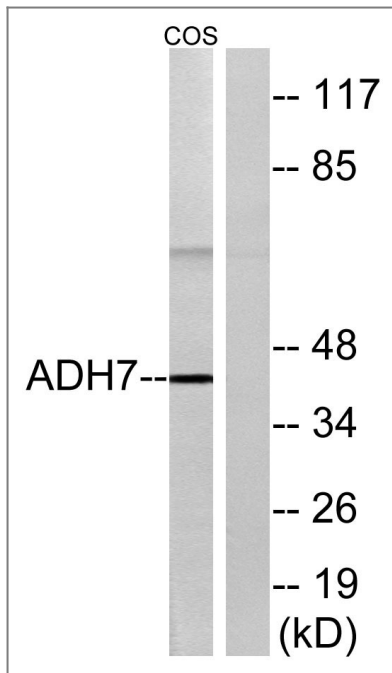
### | Target Information

Gene name	ADH7		
Protein Name	Alcohol dehydrogenase class 4 mu/sigma chain		
	Organism	Gene ID	UniProt ID
	Human	<a href="#">131;</a>	<a href="#">P40394;</a>
	Mouse		<a href="#">Q64437;</a>
Cellular Localization	Cytoplasm.		
Tissue specificity	Preferentially expressed in stomach.		
Function	Catalytic activity:An alcohol + NAD(+) = an aldehyde or ketone + NADH.,cofactor:Binds 2 zinc ions per subunit.,cofactor:Zinc.,Function:Could function in retinol oxidation for the synthesis of retinoic acid, a hormone important for cellular differentiation. Medium-chain (octanol) and aromatic (m-nitrobenzaldehyde) compounds are the best substrates. Ethanol is not a good substrate but at the high ethanol concentrations reached in the digestive tract, it plays a role in the ethanol oxidation and contributes to the first pass ethanol metabolism.,miscellaneous:There are 7 different ADH's isozymes in human: three belongs to class-I: alpha, beta, and gamma, one to class-II: pi, one to class-III: chi, one to class-IV: ADH7 and one to class-V: ADH6.,similarity:Belongs to the zinc-containing alcohol dehydrogenase family. Class-IV subfamily.,subunit:Homodimer.,tissue specificity:Preferentially expressed in stomach.,		

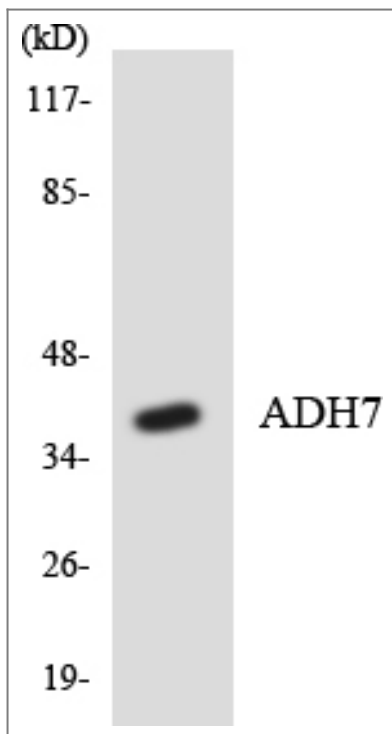
Validation Data



Western Blot analysis of various cells using ADH7 Polyclonal Antibody



Western blot analysis of lysates from COS7 cells, using ADH7 Antibody. The lane on the right is blocked with the synthesized peptide.



Western blot analysis of the lysates from HeLa cells using ADH7 antibody.

## Contact information

Orders: [order@immunoway.com](mailto:order@immunoway.com)  
 Support: [tech@immunoway.com](mailto:tech@immunoway.com)  
 Telephone: 877-594-3616 (Toll Free), 408-747-0185  
 Website: <http://www.immunoway.com>  
 Address: 2200 Ringwood Ave San Jose, CA 95131 USA



Please scan the QR code to access additional product information:  
**ADH7 Rabbit pAb**

