

Adenosine A2A-R Rabbit pAb

CatalogNo: YT0129

Key Features

Host Species

- Rabbit

Reactivity

- Human,Rat,Mouse,

Applications

- WB,IHC,IF,ELISA

MW

- 37kD (Observed)

Isotype

- IgG

Recommended Dilution Ratios

WB 1:500-1:2000

IHC 1:100-1:300

IF 1:200-1:1000

ELISA 1:5000

Not yet tested in other applications.

Storage

Storage*

-15°C to -25°C/1 year(Do not lower than -25°C)

Formulation

Liquid in PBS containing 50% glycerol, 0.5% BSA and 0.02% sodium azide.

Basic Information

Clonality

Polyclonal

Immunogen Information

Immunogen

The antiserum was produced against synthesized peptide derived from human ADORA2A. AA range:120-169

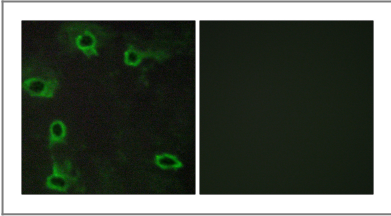
Specificity

Adenosine A2A-R Polyclonal Antibody detects endogenous levels of Adenosine A2A-R protein.

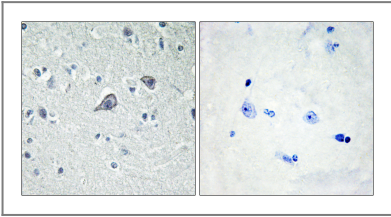
| Target Information

| | | | |
|-----------------------|---|----------------------|-------------------------|
| Gene name | ADORA2A | | |
| Protein Name | Adenosine receptor A2a | | |
| | Organism | Gene ID | UniProt ID |
| | Human | 135; | P29274; |
| | Mouse | | Q60613; |
| Cellular Localization | Cell membrane ; Multi-pass membrane protein . Colocalizes with GAS2L2 at neuronal processes. . | | |
| Tissue specificity | Brain,Hippocampus,Lymph,Thymus, | | |
| Function | Function:Receptor for adenosine. The activity of this receptor is mediated by G proteins which activate adenylyl cyclase.,similarity:Belongs to the G-protein coupled receptor 1 family., | | |

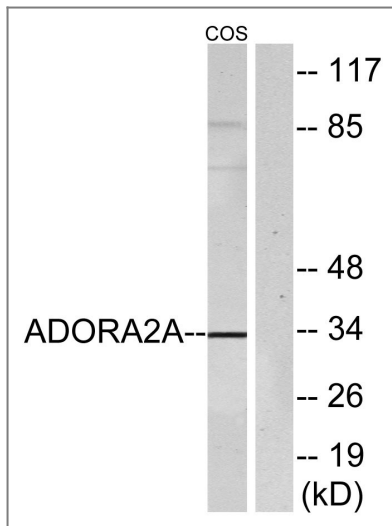
| Validation Data



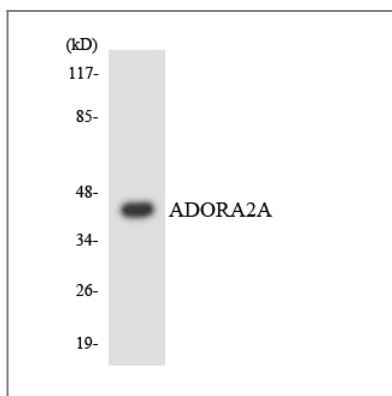
Immunofluorescence analysis of COS7 cells, using ADORA2A Antibody. The picture on the right is blocked with the synthesized peptide.



Immunohistochemistry analysis of paraffin-embedded human brain tissue, using ADORA2A Antibody. The picture on the right is blocked with the synthesized peptide.



Western blot analysis of ADORA2A Antibody. The lane on the right is blocked with the ADORA2A peptide.



Western blot analysis of the lysates from HepG2 cells using ADORA2A antibody.

Contact information

Orders: order@immunoway.com
 Support: tech@immunoway.com
 Telephone: 877-594-3616 (Toll Free), 408-747-0185
 Website: <http://www.immunoway.com>
 Address: 2200 Ringwood Ave San Jose, CA 95131 USA



Please scan the QR code to access additional product information:
Adenosine A2A-R
Rabbit pAb

For Research Use Only. Not for Use in Diagnostic Procedures.

[Antibody](#) | [ELISA Kits](#) | [Protein](#) | [Reagents](#)