

## ADAMTS-16 Rabbit pAb

CatalogNo: YT0114

### Key Features

#### Host Species

- Rabbit

#### Reactivity

- Human, Mouse

#### Applications

- IHC, IF, ELISA

#### MW

- 136kD (Calculated)

#### Isotype

- IgG

### Recommended Dilution Ratios

IHC 1:100-1:300

ELISA 1:40000

IF 1:50-200

### Storage

#### Storage\*

-15°C to -25°C/1 year (Do not lower than -25°C)

#### Formulation

Liquid in PBS containing 50% glycerol, 0.5% BSA and 0.02% sodium azide.

### Basic Information

#### Clonality

Polyclonal

### Immunogen Information

#### Immunogen

Synthesized peptide derived from ADAMTS-16 . at AA range: 440-520

#### Specificity

ADAMTS-16 Polyclonal Antibody detects endogenous levels of ADAMTS-16 protein.

### Target Information

#### Gene name

ADAMTS16

**Protein Name** A disintegrin and metalloproteinase with thrombospondin motifs 16

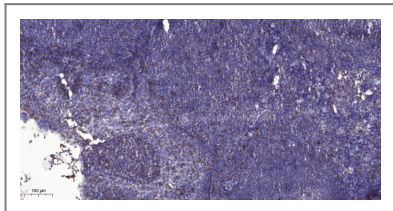
Organism	Gene ID	UniProt ID
Human	<a href="#">170690</a> ;	<a href="#">Q8TE57</a> ;
Mouse	<a href="#">271127</a> ;	<a href="#">Q69Z28</a> ;

**Cellular Localization** Secreted, extracellular space, extracellular matrix .

**Tissue specificity** Expressed in fetal lung and kidney and in adult prostate and ovary.

**Function** cofactor: Binds 1 zinc ion per subunit., Domain: The conserved cysteine present in the cysteine-switch motif binds the catalytic zinc ion, thus inhibiting the enzyme. The dissociation of the cysteine from the zinc ion upon the activation-peptide release activates the enzyme., Domain: The spacer domain and the TSP type-1 domains are important for a tight interaction with the extracellular matrix., PTM: The precursor is cleaved by a furin endopeptidase., similarity: Contains 1 disintegrin domain., similarity: Contains 1 peptidase M12B domain., similarity: Contains 1 PLAC domain., similarity: Contains 6 TSP type-1 domains., tissue specificity: Expressed in fetal lung and kidney and in adult prostate and ovary.,

## Validation Data



Immunohistochemical analysis of paraffin-embedded human tonsil. 1, Antibody was diluted at 1:200 (4° overnight). 2, Tris-EDTA, pH 9.0 was used for antigen retrieval. 3, Secondary antibody was diluted at 1:200 (room temperature, 30 min).

## Contact information

Orders: [order@immunoway.com](mailto:order@immunoway.com)  
Support: [tech@immunoway.com](mailto:tech@immunoway.com)  
Telephone: 877-594-3616 (Toll Free), 408-747-0185  
Website: <http://www.immunoway.com>  
Address: 2200 Ringwood Ave San Jose, CA 95131 USA



Please scan the QR code to access additional product information:  
**ADAMTS-16 Rabbit pAb**