

ACYP2 Rabbit pAb

CatalogNo: YT0109

Key Features

Host Species

- Rabbit

Reactivity

- Human,Rat

Applications

- WB,ELISA

MW

- 18kD (Observed)

Isotype

- IgG

Storage

Storage* -15°C to -25°C/1 year(Do not lower than -25°C)

Formulation Liquid in PBS containing 50% glycerol, 0.5% BSA and 0.02% sodium azide.

Recommended Dilution Ratios

WB 1:500-1:2000

ELISA 1:10000

Not yet tested in other applications.

Basic Information

Clonality Polyclonal

Immunogen Information

Immunogen Synthesized peptide derived from ACYP2 . at AA range: 40-120

Specificity ACYP2 Polyclonal Antibody detects endogenous levels of ACYP2 protein.

Target Information

Gene name ACYP2

Protein Name

Acylphosphatase-2

Organism	Gene ID	UniProt ID
Human	98 ;	P14621 ;
Mouse		P56375 ;
Rat		P35745 ;

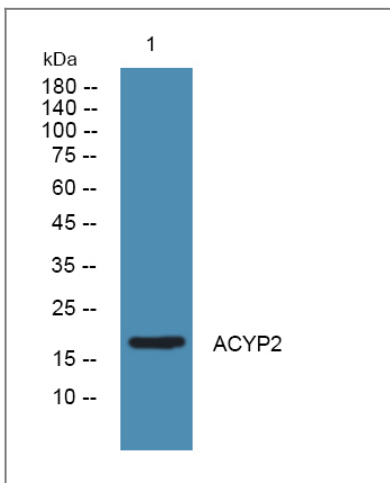
Cellular Localization

mitochondrion,

Tissue specificity Heart,Muscle,Ovary,**Function**

Catalytic activity:An acylphosphate + H(2)O = a carboxylate + phosphate.,Function:Its physiological role is not yet clear.,similarity:Belongs to the acylphosphatase family.,similarity:Contains 1 acylphosphatase-like domain.,

Validation Data



Western blot analysis of lysates from Jurkat cells, primary antibody was diluted at 1:1000, 4° over night

Contact information

Orders: order@immunoway.com
Support: tech@immunoway.com
Telephone: 877-594-3616 (Toll Free), 408-747-0185
Website: <http://www.immunoway.com>
Address: 2200 Ringwood Ave San Jose, CA 95131 USA



Please scan the QR code to access additional product information:
ACYP2 Rabbit pAb