

## Actinin- $\alpha$ 1/2/3/4 Rabbit pAb

CatalogNo: YT0101

### Key Features

#### Host Species

- Rabbit

#### Reactivity

- Human, Mouse, Rat

#### Applications

- WB, IHC, IF, ELISA

#### MW

- 75kD (Observed)

#### Isotype

- IgG

### Recommended Dilution Ratios

**WB 1:500-1:2000**

**IHC 1:100-1:300**

**ELISA 1:20000**

**IF 1:50-200**

### Storage

#### Storage\*

-15°C to -25°C/1 year (Do not lower than -25°C)

#### Formulation

Liquid in PBS containing 50% glycerol, 0.5% BSA and 0.02% sodium azide.

### Basic Information

#### Clonality

Polyclonal

### Immunogen Information

#### Immunogen

The antiserum was produced against synthesized peptide derived from human ACTN1/2/3/4. AA range: 21-70

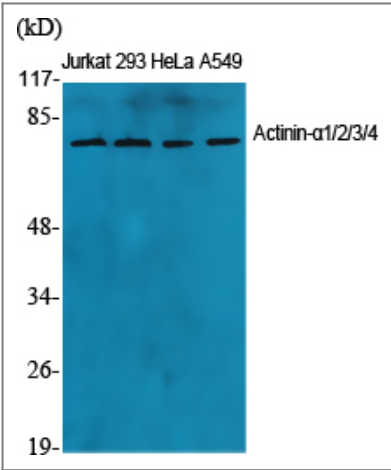
#### Specificity

Actinin- $\alpha$ 1/2/3/4 Polyclonal Antibody detects endogenous levels of Actinin- $\alpha$ 1/2/3/4 protein.

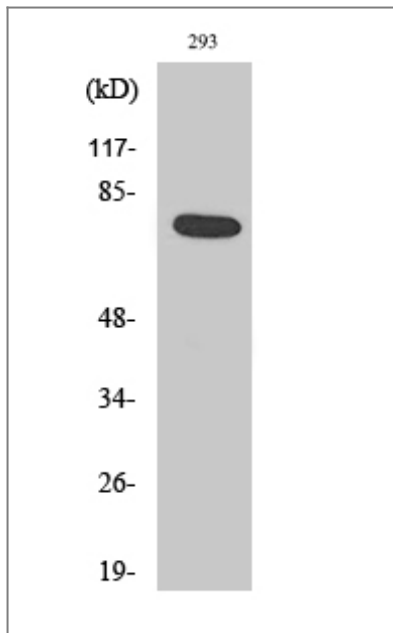
## Target Information

Gene name	ACTN1/2/3/4		
Protein Name	Alpha-actinin-1/2/3/4		
	Organism	Gene ID	UniProt ID
	Human	<a href="#">87</a> ; <a href="#">88</a> ; <a href="#">89</a> ; <a href="#">81</a> ;	<a href="#">P12814</a> ; <a href="#">P35609</a> ; <a href="#">Q08043</a> ; <a href="#">O43707</a> ;
	Mouse	<a href="#">109711</a> ; <a href="#">11472</a> ; <a href="#">11474</a> ; <a href="#">60595</a> ;	
	Rat	<a href="#">81634</a> ; <a href="#">63836</a> ;	<a href="#">Q9Z1P2</a> ; <a href="#">Q9QXQ0</a> ;
Cellular Localization	Cytoplasm, cytoskeleton . Cytoplasm, myofibril, sarcomere, Z line . Cell membrane . Cell junction . Cell projection, ruffle . Colocalizes with MYOZ2 and PPP3CA at the Z-line of heart and skeletal muscle. Colocalizes with PSD in membrane ruffles and central reticular structures. .		
Tissue specificity	Colon,Epithelium,Hepatocyte,Neuroblastoma,Placenta,Platelet,Skin,Tumor of tongue,		
Function	Function:F-actin cross-linking protein which is thought to anchor actin to a variety of intracellular structures. This is a bundling protein.,similarity:Belongs to the alpha-actinin family.,similarity:Contains 1 actin-binding domain.,similarity:Contains 2 CH (calponin-homology) domains.,similarity:Contains 2 EF-hand domains.,similarity:Contains 4 spectrin repeats.,subcellular location:Colocalizes with MYOZ2 and PPP3CA at the Z-line of heart and skeletal muscle.,subunit:Homodimer; antiparallel. Interacts with DDN, MYOZ2, PDLIM2, TTID and LPP.,		

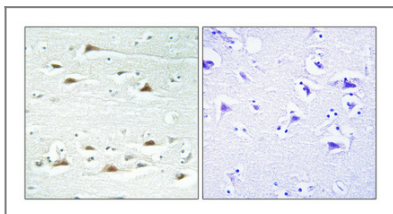
## Validation Data



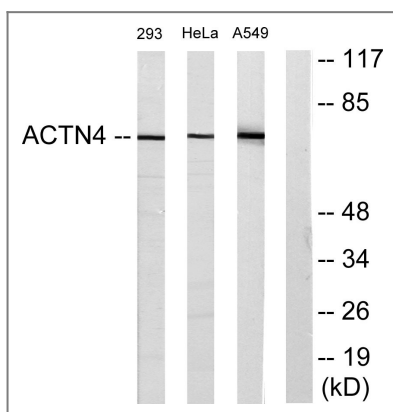
Western Blot analysis of various cells using Actinin-α1/2/3/4 Polyclonal Antibody diluted at 1:1000



Western Blot analysis of A549 cells using Actinin- $\alpha$ 1/2/3/4 Polyclonal Antibody diluted at 1:1000



Immunohistochemical analysis of paraffin-embedded Human brain. Antibody was diluted at 1:100 (4° overnight). High-pressure and temperature Tris-EDTA, pH 8.0 was used for antigen retrieval. Negative control (right) obtained from antibody was pre-absorbed by immunogen peptide.



Western blot analysis of lysates from 293, HeLa, and A549 cells, using ACTN1/2/3/4 Antibody. The lane on the right is blocked with the synthesized peptide.

## Contact information

Orders: order@immunoway.com  
 Support: tech@immunoway.com  
 Telephone: 877-594-3616 (Toll Free), 408-747-0185  
 Website: <http://www.immunoway.com>  
 Address: 2200 Ringwood Ave San Jose, CA 95131 USA



Please scan the QR code to access additional product information:  
**Actinin- $\alpha$ 1/2/3/4**  
**Rabbit pAb**