

## ACSVL4 Rabbit pAb

CatalogNo: YT0094

### Key Features

#### Host Species

- Rabbit

#### Reactivity

- Human, Mouse

#### Applications

- IF, ELISA

#### MW

- 72kD (Calculated)

#### Isotype

- IgG

### Storage

**Storage\*** -15°C to -25°C/1 year (Do not lower than -25°C)

**Formulation** Liquid in PBS containing 50% glycerol, 0.5% BSA and 0.02% sodium azide.

### Recommended Dilution Ratios

**IF 1:200-1:1000**

**ELISA 1:20000**

**Not yet tested in other applications**

### Basic Information

**Clonality** Polyclonal

### Immunogen Information

**Immunogen** The antiserum was produced against synthesized peptide derived from human SLC27A4. AA range:61-110

**Specificity** ACSVL4 Polyclonal Antibody detects endogenous levels of ACSVL4 protein.

### Target Information

**Gene name** SLC27A4

**Protein Name** Long-chain fatty acid transport protein 4

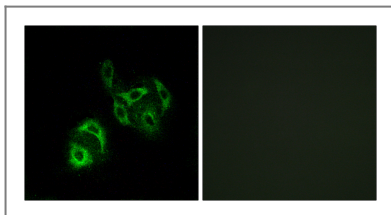
Organism	Gene ID	UniProt ID
Human	<a href="#">10999</a> ;	<a href="#">Q6P1M0</a> ;
Mouse		<a href="#">Q91VE0</a> ;

**Cellular Localization** Endoplasmic reticulum membrane ; Multi-pass membrane protein .

**Tissue specificity** Expressed at highest levels in brain, testis, colon and kidney. Expressed at medium levels in heart and liver, small intestine and stomach. Expressed at low levels in peripheral leukocytes, bone marrow, skeletal muscle and aorta. Expressed in adipose tissue (PubMed:24269233, PubMed:9878842). Expressed in brain gray matter (PubMed:21395585).

**Function** Function:Involved in translocation of long-chain fatty acids (LFCA) across the plasma membrane. Appears to be the principal fatty acid transporter in small intestinal enterocytes. Plays a role in the formation of the epidermal barrier. Required for fat absorption in early embryogenesis. Has acyl-CoA ligase activity for long-chain and very-long-chain fatty acids.,miscellaneous:SLC27A4/FATP4-mediated fatty acid uptake is associated to parameters related to insulin resistance, which is associated with disturbed fatty acid metabolism and homeostasis, such as obesity. SLC27A4/FATP4 expression is positively correlated with acquired obesity.,similarity:Belongs to the ATP-dependent AMP-binding enzyme family.,tissue specificity:Expressed at highest levels in brain, testis, colon and kidney. Expressed at medium levels in heart and liver, small intestine and stomach. Expressed at low levels in peripheral leukocytes, bone marrow, skeletal muscle and aorta. Expressed in adipose tissue.,

## Validation Data



Immunofluorescence analysis of A549 cells, using SLC27A4 Antibody. The picture on the right is blocked with the synthesized peptide.

## Contact information

Orders: [order@immunoway.com](mailto:order@immunoway.com)  
Support: [tech@immunoway.com](mailto:tech@immunoway.com)  
Telephone: 877-594-3616 (Toll Free), 408-747-0185  
Website: <http://www.immunoway.com>  
Address: 2200 Ringwood Ave San Jose, CA 95131 USA



Please scan the QR code to access additional product information:  
**ACSVL4 Rabbit pAb**

