

ACBP Rabbit pAb

CatalogNo: YT0073

| Key Features

Host Species

- Rabbit

Reactivity

- Human,Rat,Mouse,

Applications

- WB,IHC,IF,ELISA

MW

- 10kD (Observed)

Isotype

- IgG

| Recommended Dilution Ratios

WB 1:500-1:2000

IHC 1:100-1:300

ELISA 1:10000

IF 1:50-200

| Storage

Storage* -15°C to -25°C/1 year(Do not lower than -25°C)

Formulation Liquid in PBS containing 50% glycerol, 0.5% BSA and 0.02% sodium azide.

| Basic Information

Clonality Polyclonal

| Immunogen Information

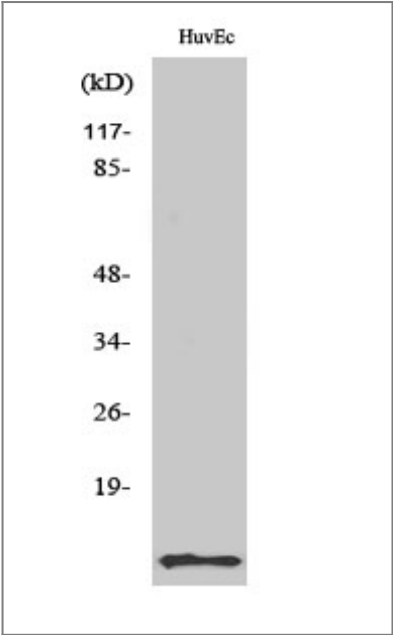
Immunogen The antiserum was produced against synthesized peptide derived from human ACBP. AA range:25-74

Specificity ACBP Polyclonal Antibody detects endogenous levels of ACBP protein.

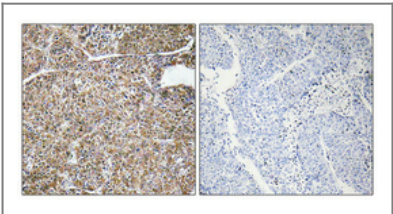
| Target Information

Gene name	DBI		
Protein Name	Acyl-CoA-binding protein		
	Organism	Gene ID	UniProt ID
	Human	1622 ;	P07108 ;
	Mouse	13167 ;	P31786 ;
	Rat	25045 ;	P11030 ;
Cellular Localization	Endoplasmic reticulum . Golgi apparatus . Golgi localization is dependent on ligand binding (PubMed:17953517). .		
Tissue specificity	Isoform 1 is ubiquitous, with a moderate expression level. Isoform 2 is ubiquitous with high level in liver and adipose tissue. Isoform 3 is ubiquitous with strong expression in adipose tissue and heart.		
Function	Function: Binds medium- and long-chain acyl-CoA esters with very high affinity and may function as an intracellular carrier of acyl-CoA esters. It is also able to displace diazepam from the benzodiazepine (BZD) recognition site located on the GABA type A receptor. It is therefore possible that this protein also acts as a neuropeptide to modulate the action of the GABA receptor.,similarity: Belongs to the ACBP family.,similarity: Contains 1 ACB (acyl-CoA-binding) domain.,subunit: Monomer.,		

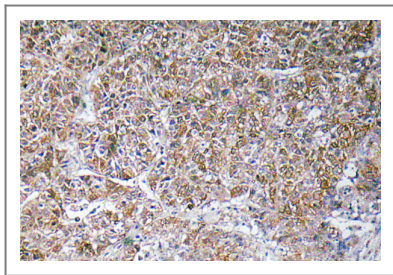
| Validation Data



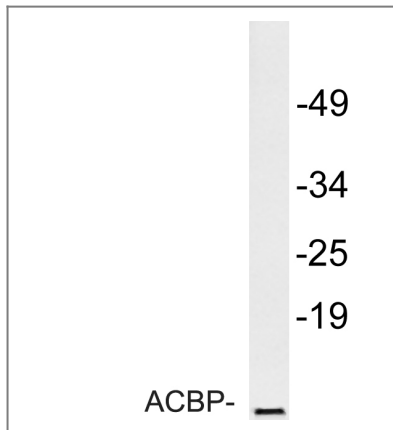
Western Blot analysis of various cells using ACBP Polyclonal Antibody



Immunohistochemical analysis of paraffin-embedded Human lung cancer. Antibody was diluted at 1:100(4° overnight). High-pressure and temperature Tris-EDTA,pH8.0 was used for antigen retrieval. Negative contrl (right) obtaned from antibody was pre-absorbed by immunogen peptide.



Immunohistochemistry analysis of ACBP antibody in paraffin-embedded human liver carcinoma tissue.



Western blot analysis of lysate from HuvEc cells, using ACBP antibody.

| Contact information

Orders: order@immunoway.com
Support: tech@immunoway.com
Telephone: 877-594-3616 (Toll Free), 408-747-0185
Website: <http://www.immunoway.com>
Address: 2200 Ringwood Ave San Jose, CA 95131 USA



Please scan the QR code
to access additional
product information:
ACBP Rabbit pAb

For Research Use Only. Not for Use in Diagnostic Procedures.

[Antibody](#) | [ELISA Kits](#) | [Protein](#) | [Reagents](#)