

## Abi-1 Rabbit pAb

CatalogNo: YT0065

Orthogonal Validated 

### Key Features

#### Host Species

- Rabbit

#### Reactivity

- Human, Mouse, Rat

#### Applications

- WB, ELISA

#### MW

- 55kD (Observed)

#### Isotype

- IgG

### Recommended Dilution Ratios

**WB 1:500-1:2000****ELISA 1:40000****Not yet tested in other applications.**

### Storage

**Storage\***

-15°C to -25°C/1 year (Do not lower than -25°C)

**Formulation**

Liquid in PBS containing 50% glycerol, 0.5% BSA and 0.02% sodium azide.

### Basic Information

**Clonality**

Polyclonal

### Immunogen Information

**Immunogen**

The antiserum was produced against synthesized peptide derived from human Abi-1. AA range:152-201

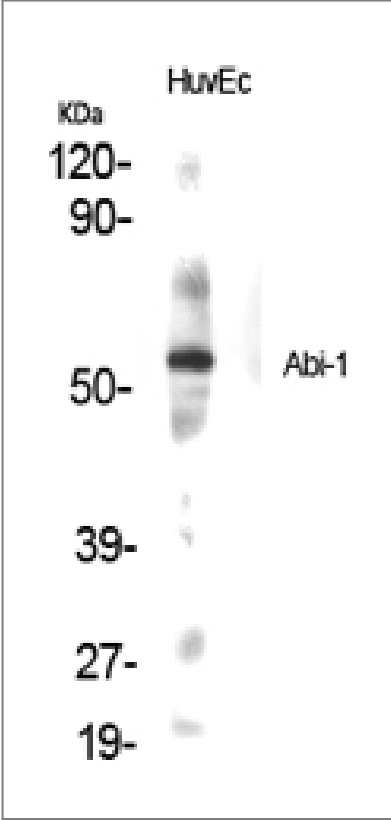
**Specificity**

Abi-1 Polyclonal Antibody detects endogenous levels of Abi-1 protein.

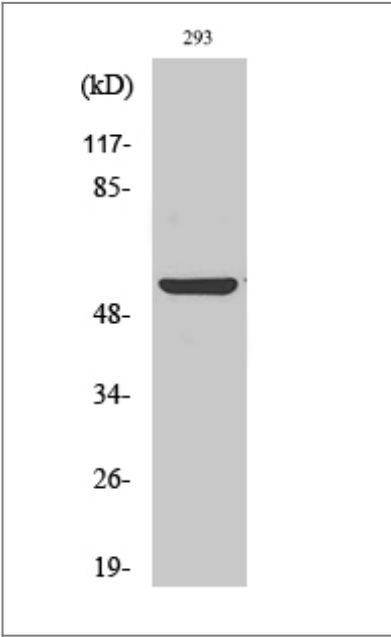
### Target Information

|                       |   |                         |                          |
|-----------------------|---|-------------------------|--------------------------|
| Gene name             | ABI1  |                         |                          |
| Protein Name          | Abl interactor 1  |                         |                          |
|                       | Organism  | Gene ID                 | UniProt ID               |
|                       | Human   | <a href="#">10006</a> ; | <a href="#">Q8IZP0</a> ; |
|                       | Mouse   | <a href="#">11308</a> ; | <a href="#">Q8CBW3</a> ; |
|                       | Rat   |                         | <a href="#">Q9QZM5</a> ; |
| Cellular Localization | Cytoplasm . Nucleus . Cell projection, lamellipodium . Cell projection, filopodium . Cell projection, growth cone . Cell junction, synapse, postsynaptic density . Cytoplasm, cytoskeleton . Localized to protruding lamellipodia and filopodia tips. Also localized to neuronal growth cones and synaptosomes. May shuttle from the postsynaptic densities to the nucleus (By similarity). .   |                         |                          |
| Tissue specificity    | Widely expressed, with highest expression in brain.   |                         |                          |
| Function              | <p>Alternative products:Additional isoforms seem to exist,Disease:A chromosomal aberration involving ABI1 is a cause of acute leukemias. Translocation t(10;11)(p11.2;q23) with MLL. ABI1 isoform 2 was found to be present in acute leukemia MLL-ABI1 fusion transcript.,Domain:The t-SNARE coiled-coil homology domain is necessary and sufficient for interaction with STX1A.,Function:May act in negative regulation of cell growth and transformation by interacting with nonreceptor tyrosine kinases ABL1 and/or ABL2. May play a role in regulation of EGF-induced Erk pathway activation. Involved in cytoskeletal reorganization and EGFR signaling. Together with EPS8 participates in transduction of signals from Ras to Rac. In vitro, a trimeric complex of ABI1, EPS8 and SOS1 exhibits Rac specific guanine nucleotide exchange factor (GEF) activity and ABI1 seems to act as an adapter in the complex. Regulates ABL1/c-Abl-mediated phosphorylation of MENA. Recruits WASF1 to lamellipodia and there seems to regulate WASF1 protein level.,PTM:In vitro substrate for v-Abl (By similarity). Phosphorylated on tyrosine residues after serum stimulation or induction by v-Abl.,similarity:Belongs to the ABI family.,similarity:Contains 1 SH3 domain.,similarity:Contains 1 t-SNARE coiled-coil homology domain.,subcellular location:Localized to protruding lamellipodia and filopodia tips. Also localized to neuronal growth cones and synaptosomes.,subunit:Interacts with ABL1, MENA, STX1A, SNAP25, VAMP2, EPS8, and through its N-terminus with WASF1. Part of a complex consisting of ABI1, STX1A and SNAP25. Part of a complex consisting of ABI1, EPS8 and SOS1 (By similarity). Interacts with SOS1, SOS2, GRB2, SPTA1 and the first SH3 domain of NCK1. Isoform 6 does not interact with NCK1. Component of the WAVE2 complex composed of ABI1, CYFIP1/SRA1, NCKAP1/NAP1 and WASF2/WAVE2.,tissue specificity:Widely expressed, with highest expression in brain.,</p> |                         |                          |

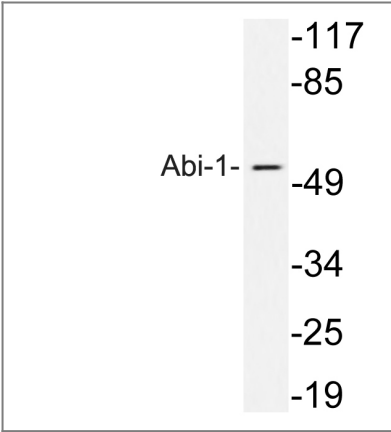
| Validation Data



Western Blot analysis of various cells using Abi-1 Polyclonal Antibody



Western Blot analysis of 293 cells using Abi-1 Polyclonal Antibody



Western blot analysis of lysates from 293 cells treated with TNF, using Abi-1 antibody.

## | Contact information

Orders: order@immunoway.com  
Support: tech@immunoway.com  
Telephone: 877-594-3616 (Toll Free), 408-747-0185  
Website: <http://www.immunoway.com>  
Address: 2200 Ringwood Ave San Jose, CA 95131 USA



Please scan the QR code  
to access additional  
product information:  
**Abi-1 Rabbit pAb**

---

For Research Use Only. Not for Use in Diagnostic Procedures.

[Antibody](#) | [ELISA Kits](#) | [Protein](#) | [Reagents](#)