

## ABHD2 Rabbit pAb

CatalogNo: YT0059

### Key Features

#### Host Species

- Rabbit

#### Reactivity

- Human, Mouse

#### Applications

- WB, IF, ELISA

#### MW

- 48kD (Observed)

#### Isotype

- IgG

### Recommended Dilution Ratios

**WB 1:500-1:2000**

**IF 1:200-1:1000**

**ELISA 1:40000**

**Not yet tested in other applications.**

### Storage

#### Storage\*

-15°C to -25°C/1 year (Do not lower than -25°C)

#### Formulation

Liquid in PBS containing 50% glycerol, 0.5% BSA and 0.02% sodium azide.

### Basic Information

#### Clonality

Polyclonal

### Immunogen Information

#### Immunogen

The antiserum was produced against synthesized peptide derived from human ABHD2. AA range: 251-300

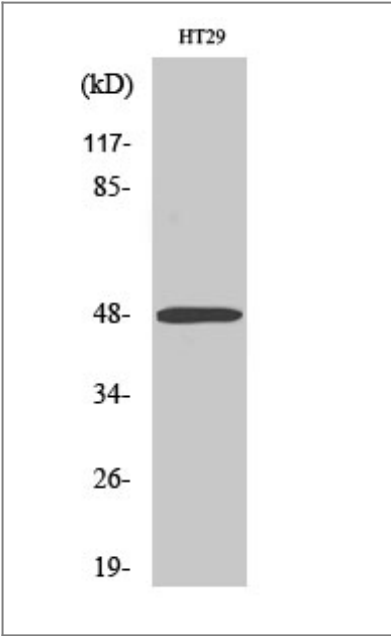
#### Specificity

ABHD2 Polyclonal Antibody detects endogenous levels of ABHD2 protein.

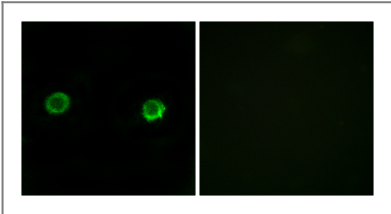
### Target Information

Gene name	ABHD2		
Protein Name	Abhydrolase domain-containing protein 2		
	Organism	Gene ID	UniProt ID
	Human	<a href="#">11057</a> ;	<a href="#">P08910</a> ;
	Mouse	<a href="#">54608</a> ;	<a href="#">Q9QXM0</a> ;
Cellular Localization	Cell projection, cilium, flagellum membrane ; Single-pass type II membrane protein . Cell membrane ; Single-pass type II membrane protein .		
Tissue specificity	Present in sperm (at protein level).		
Function	Caution:Was originally (PubMed:2843827) thought to be a G-coupled receptor.,Function:May play a role in smooth muscle cells migration.,similarity:Belongs to the AB hydrolase superfamily. AB hydrolase 4 family.,		

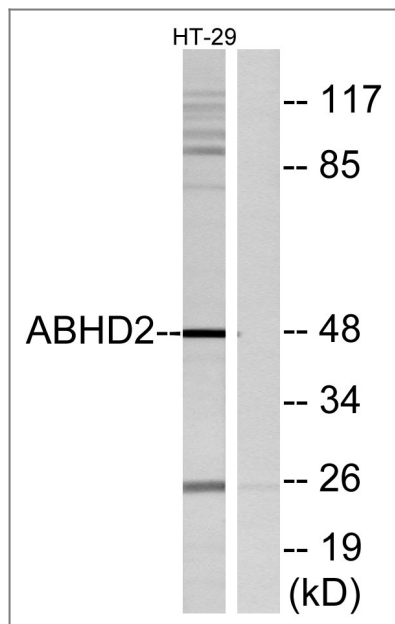
| Validation Data



Western Blot analysis of various cells using ABHD2 Polyclonal Antibody



Immunofluorescence analysis of MCF-7 cells, using ABHD2 Antibody. The picture on the right is blocked with the synthesized peptide.



Western blot analysis of lysates from HT29 cells, using ABHD2 Antibody. The lane on the right is blocked with the synthesized peptide.

## Contact information

Orders: [order@immunoway.com](mailto:order@immunoway.com)  
 Support: [tech@immunoway.com](mailto:tech@immunoway.com)  
 Telephone: 877-594-3616 (Toll Free), 408-747-0185  
 Website: <http://www.immunoway.com>  
 Address: 2200 Ringwood Ave San Jose, CA 95131 USA



Please scan the QR code to access additional product information:  
**ABHD2 Rabbit pAb**

For Research Use Only. Not for Use in Diagnostic Procedures.

[Antibody](#) | [ELISA Kits](#) | [Protein](#) | [Reagents](#)