

## ABCD4 Rabbit pAb

CatalogNo: YT0050

### Key Features

#### Host Species

- Rabbit

#### Reactivity

- Human, Mouse

#### Applications

- WB, IHC, IF, ELISA

#### MW

- 70kD (Observed)

#### Isotype

- IgG

### Recommended Dilution Ratios

**WB 1:500-1:2000**

**IHC 1:100-1:300**

**ELISA 1:10000**

**IF 1:50-200**

### Storage

#### Storage\*

-15°C to -25°C/1 year (Do not lower than -25°C)

#### Formulation

Liquid in PBS containing 50% glycerol, 0.5% BSA and 0.02% sodium azide.

### Basic Information

#### Clonality

Polyclonal

### Immunogen Information

#### Immunogen

The antiserum was produced against synthesized peptide derived from human ABCD4. AA range: 111-160

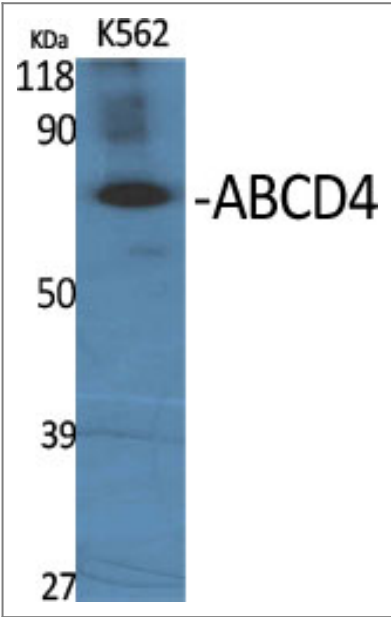
#### Specificity

ABCD4 Polyclonal Antibody detects endogenous levels of ABCD4 protein.

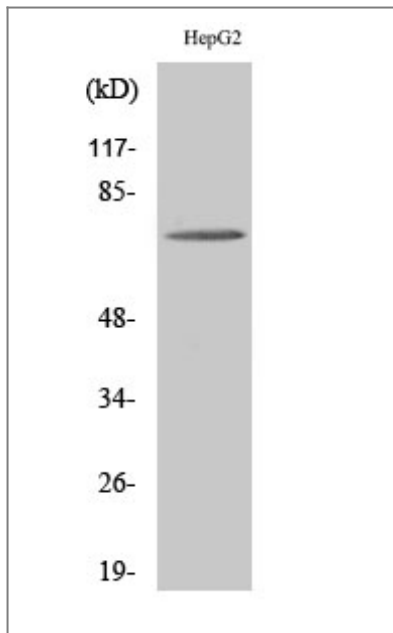
### Target Information

Gene name	ABCD4		
Protein Name	ATP-binding cassette sub-family D member 4		
	Organism	Gene ID	UniProt ID
	Human	<a href="#">5826</a> ;	<a href="#">O14678</a> ;
	Mouse	<a href="#">19300</a> ;	<a href="#">O89016</a> ;
Cellular Localization	Endoplasmic reticulum membrane ; Multi-pass membrane protein . Lysosome membrane ; Multi-pass membrane protein . Targeted by LMBRD1 lysosomal chaperone to the lysosomal membrane. .		
Tissue specificity	Ubiquitous.		
Function	similarity:Belongs to the ABC transporter family. ALD subfamily.,similarity:Contains 1 ABC transmembrane type-1 domain.,similarity:Contains 1 ABC transporter domain.,subunit:Homodimer or heterodimer .,tissue specificity:Ubiquitous.,		

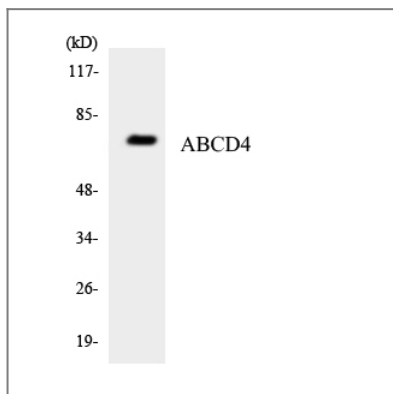
| Validation Data



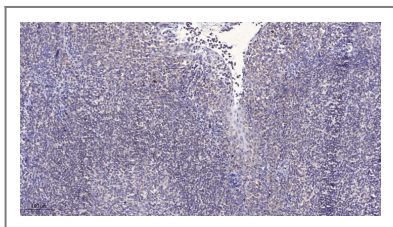
Western Blot analysis of various cells using ABCD4 Polyclonal Antibody diluted at 1:500



Western Blot analysis of HepG2 cells using ABCD4 Polyclonal Antibody diluted at 1:500



Western blot analysis of the lysates from HeLa cells using ABCD4 antibody.



Immunohistochemical analysis of paraffin-embedded human tonsil. 1, Antibody was diluted at 1:200(4° overnight). 2, Tris-EDTA,pH9.0 was used for antigen retrieval. 3,Secondary antibody was diluted at 1:200(room temperature, 30min).

## Contact information

Orders: order@immunoway.com  
 Support: tech@immunoway.com  
 Telephone: 877-594-3616 (Toll Free), 408-747-0185  
 Website: <http://www.immunoway.com>  
 Address: 2200 Ringwood Ave San Jose, CA 95131 USA



Please scan the QR code to access additional product information:  
**ABCD4 Rabbit pAb**