

## A Cyclase VIII Rabbit pAb

CatalogNo: YT0035

### | Key Features

#### Host Species

- Rabbit

#### Reactivity

- Human, Mouse, Rat

#### Applications

- IHC, IF, ELISA

#### MW

- 140kD (Calculated)

#### Isotype

- IgG

### | Recommended Dilution Ratios

**IHC 1:100-1:300**

**IF 1:200-1:1000**

**ELISA 1:40000**

**Not yet tested in other applications.**

### | Storage

#### Storage\*

-15°C to -25°C/1 year (Do not lower than -25°C)

#### Formulation

Liquid in PBS containing 50% glycerol, 0.5% BSA and 0.02% sodium azide.

### | Basic Information

#### Clonality

Polyclonal

### | Immunogen Information

#### Immunogen

The antiserum was produced against synthesized peptide derived from human ADCY8. AA range: 591-640

#### Specificity

A Cyclase VIII Polyclonal Antibody detects endogenous levels of A Cyclase VIII protein.

### | Target Information

**Gene name** ADCY8

**Protein Name** Adenylate cyclase type 8

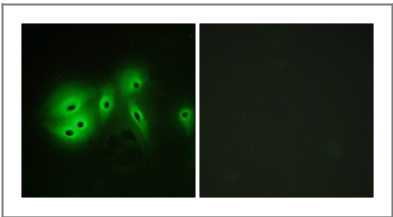
Organism	Gene ID	UniProt ID
Human	<a href="#">114</a> ;	<a href="#">P40145</a> ;
Mouse	<a href="#">11514</a> ;	<a href="#">P97490</a> ;
Rat	<a href="#">29241</a> ;	<a href="#">P40146</a> ;

**Cellular Localization** Cell membrane ; Multi-pass membrane protein . Basolateral cell membrane . Apical cell membrane . Cell junction, synapse . Cell projection, dendrite . Cell projection, axon . Cell junction, synapse, presynaptic cell membrane . Cell junction, synapse, postsynaptic density . Membrane raft . Membrane, coated pit . Cytoplasmic vesicle, clathrin-coated vesicle membrane . Membrane, caveola . Localized to dendritic arbors (By similarity). Monomeric N-glycosylated species localizes in membrane raft. In contrast, monomeric unglycosylated forms are enriched in clathrin-coated pits and vesicles. Dimers are also localized outside of membrane rafts. Membrane raft localization and integrity is indispensable for CCE-stimulated adenylate cyclase activity (By similarity). .

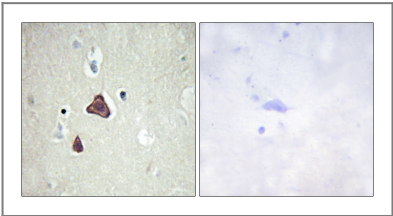
**Tissue specificity** Detected in brain cortex (PubMed:1715695). Expressed in islet (PubMed:25403481).

**Function** Catalytic activity:ATP = 3',5'-cyclic AMP + diphosphate.,cofactor:Binds 2 magnesium ions per subunit.,enzyme regulation:Activated by calcium/calmodulin.,Function:This is a membrane-bound, calcium-stimulable adenylyl cyclase. May be involved in learning, in memory and in drug dependence.,similarity:Belongs to the adenylyl cyclase class-4/guanylyl cyclase family.,similarity:Contains 2 guanylate cyclase domains.,

## Validation Data



Immunofluorescence analysis of A549 cells, using ADCY8 Antibody. The picture on the right is blocked with the synthesized peptide.



Immunohistochemistry analysis of paraffin-embedded human brain tissue, using ADCY8 Antibody. The picture on the right is blocked with the synthesized peptide.

## Contact information

Orders: order@immunoway.com  
Support: tech@immunoway.com  
Telephone: 877-594-3616 (Toll Free), 408-747-0185  
Website: <http://www.immunoway.com>  
Address: 2200 Ringwood Ave San Jose, CA 95131 USA



Please scan the QR code  
to access additional  
product information:  
**A Cyclase VIII  
Rabbit pAb**

---

For Research Use Only. Not for Use in Diagnostic Procedures.

[Antibody](#) | [ELISA Kits](#) | [Protein](#) | [Reagents](#)