

## A Cyclase V/VI Rabbit pAb

CatalogNo: YT0032

### Key Features

#### Host Species

- Rabbit

#### Reactivity

- Human, Mouse, Rat

#### Applications

- WB, IHC, IF, ELISA

#### MW

- 138kD (Observed)

#### Isotype

- IgG

### Recommended Dilution Ratios

**WB 1:500-1:2000**

**IHC 1:100-1:300**

**IF 1:200-1:1000**

**ELISA 1:10000**

**Not yet tested in other applications.**

### Storage

#### Storage\*

-15°C to -25°C/1 year (Do not lower than -25°C)

#### Formulation

Liquid in PBS containing 50% glycerol, 0.5% BSA and 0.02% sodium azide.

### Basic Information

#### Clonality

Polyclonal

### Immunogen Information

#### Immunogen

The antiserum was produced against synthesized peptide derived from human ADCY5/6. AA range: 931-980

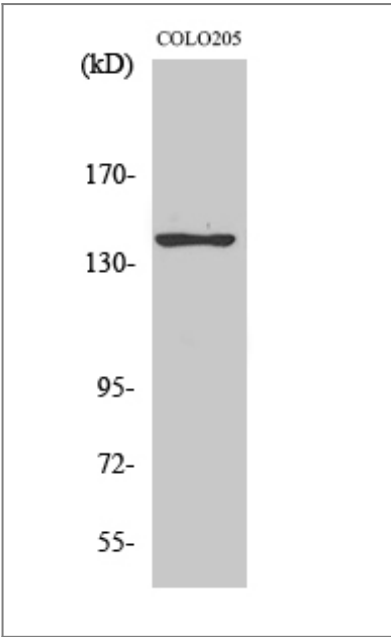
#### Specificity

A Cyclase V/VI Polyclonal Antibody detects endogenous levels of A Cyclase V/VI protein.

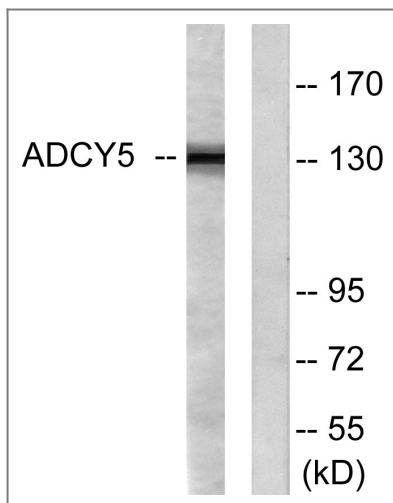
## Target Information

Gene name	ADCY5/ADCY6		
Protein Name	Adenylate cyclase type 5/6		
	Organism	Gene ID	UniProt ID
	Human	<a href="#">111</a> ; <a href="#">112</a> ;	<a href="#">Q95622</a> ; <a href="#">Q43306</a> ;
	Mouse	<a href="#">224129</a> ; <a href="#">11512</a> ;	
	Rat	<a href="#">64532</a> ;	<a href="#">Q04400</a> ; <a href="#">Q03343</a> ;
Cellular Localization	Cell membrane ; Multi-pass membrane protein. Cell projection, cilium .		
Tissue specificity	Detected in pancreas islets (at protein level). Detected in pancreas islets.		
Function	Catalytic activity:ATP = 3',5'-cyclic AMP + diphosphate.,cofactor:Binds 2 magnesium ions per subunit.,enzyme regulation:Inhibition by calcium in the submicromolar concentration range.,Function:This is a membrane-bound, calcium-inhibitable adenyl cyclase.,similarity:Belongs to the adenyl cyclase class-4/guanylyl cyclase family.,similarity:Contains 2 guanylate cyclase domains.,		

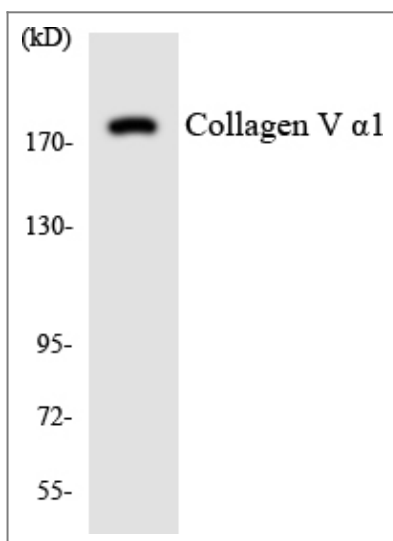
## Validation Data



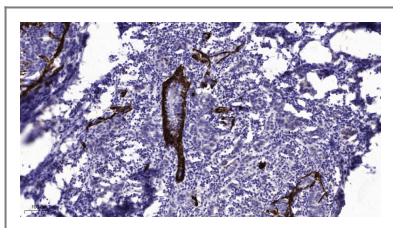
Western Blot analysis of COLO205 cells using A Cyclase V/VI Polyclonal Antibody



Western blot analysis of lysates from COLO205 cells, using ADCY5/6 Antibody. The lane on the right is blocked with the synthesized peptide.



Western blot analysis of the lysates from HUVEC cells using Collagen V  $\alpha$ 1 antibody.



Immunohistochemical analysis of paraffin-embedded human Breast cancer. 1, Antibody was diluted at 1:200 (4° overnight). 2, Tris-EDTA, pH 9.0 was used for antigen retrieval. 3, Secondary antibody was diluted at 1:200 (room temperature, 45 min).

## Contact information

Orders: [order@immunoway.com](mailto:order@immunoway.com)  
 Support: [tech@immunoway.com](mailto:tech@immunoway.com)  
 Telephone: 877-594-3616 (Toll Free), 408-747-0185  
 Website: <http://www.immunoway.com>  
 Address: 2200 Ringwood Ave San Jose, CA 95131 USA



Please scan the QR code to access additional product information:  
**A Cyclase V/VI**  
**Rabbit pAb**