

9G8 Rabbit pAb

CatalogNo: YT0028

| Key Features

Host Species

- Rabbit

Reactivity

- Human, Mouse

Applications

- WB, IHC, IF, ELISA

MW

- 35kD (Observed)

Isotype

- IgG

| Recommended Dilution Ratios

WB 1:500-1:2000

IHC 1:100-1:300

ELISA 1:40000

IF 1:50-200

| Storage

Storage*

-15°C to -25°C/1 year (Do not lower than -25°C)

Formulation

Liquid in PBS containing 50% glycerol, 0.5% BSA and 0.02% sodium azide.

| Basic Information

Clonality

Polyclonal

| Immunogen Information

Immunogen

The antiserum was produced against synthesized peptide derived from human SFRS7. AA range: 61-110

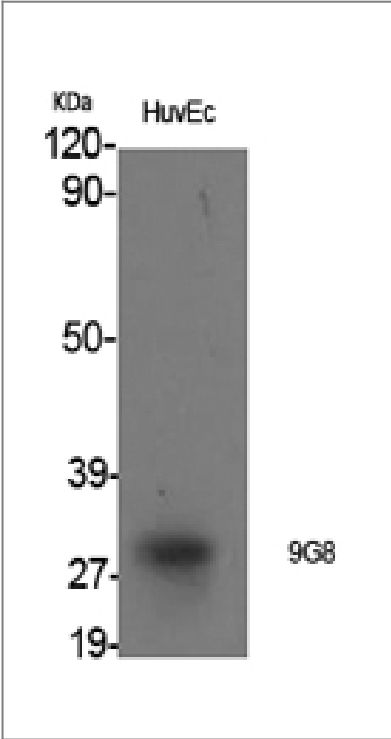
Specificity

9G8 Polyclonal Antibody detects endogenous levels of 9G8 protein.

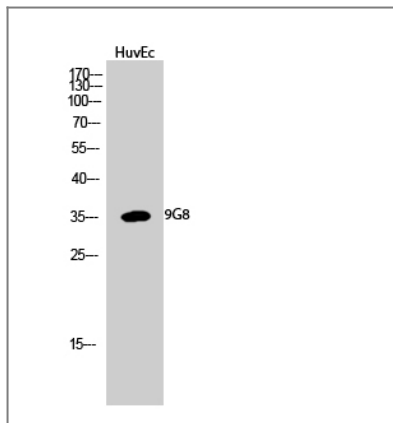
| Target Information

Gene name	SRSF7		
Protein Name	Serine/arginine-rich splicing factor 7		
	Organism	Gene ID	UniProt ID
	Human	6432 ;	Q16629 ;
	Mouse	225027 ;	Q8BL97 ;
Cellular Localization	Nucleus . Cytoplasm .		
Tissue specificity	Brain, liver, kidney and lung.		
Function	Alternative products:Isoforms, often lacking the RS domain and differentially expressed in fetal tissues, may be involved in modulation of 9G8 function,Function:Required for pre-mRNA splicing. Can also modulate alternative splicing in vitro.,PTM:Extensively phosphorylated on serine residues in the RS domain.,similarity:Belongs to the splicing factor SR family.,similarity:Contains 1 CCHC-type zinc finger.,similarity:Contains 1 RRM (RNA recognition motif) domain.,subunit:Found in large molecular weight complexes containing CCNL1 and the p110 isoforms of either CDC2L1 or CDC2L2. Interacts with CCNL2 and CPSF6.,tissue specificity:Brain, liver, kidney and lung.,		

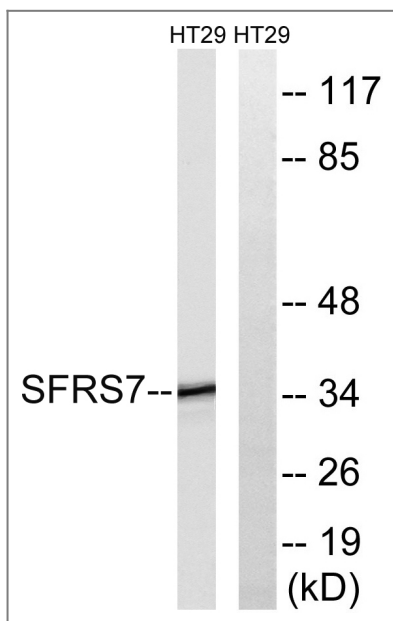
| Validation Data



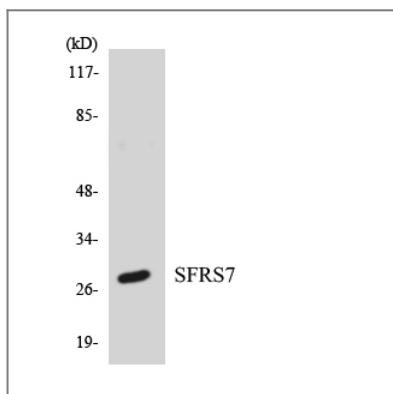
Western Blot analysis of various cells using 9G8 Polyclonal Antibody cells nucleus extracted by Minute TM Cytoplasmic and Nuclear Fractionation kit (SC-003,Inventbiotech,MN,USA).



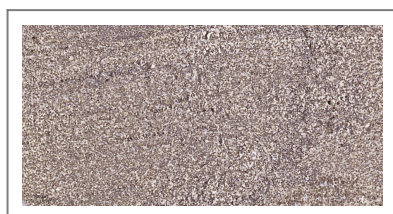
Western Blot analysis of HuvEc cells using 9G8 Polyclonal Antibody cells nucleus extracted by Minute TM Cytoplasmic and Nuclear Fractionation kit (SC-003, Inventbiotech, MN, USA).



Western blot analysis of lysates from HT-29 cells, using SFRS7 Antibody. The lane on the right is blocked with the synthesized peptide.



Western blot analysis of the lysates from HT-29 cells using SFRS7 antibody.



Immunohistochemical analysis of paraffin-embedded human tonsil. 1, Tris-EDTA, pH 9.0 was used for antigen retrieval. 2 Antibody was diluted at 1:200 (4° overnight). 3, Secondary antibody was diluted at 1:200 (room temperature, 45 min).

Contact information

Orders: order@immunoway.com
Support: tech@immunoway.com
Telephone: 877-594-3616 (Toll Free), 408-747-0185
Website: <http://www.immunoway.com>
Address: 2200 Ringwood Ave San Jose, CA 95131 USA



Please scan the QR code
to access additional
product information:
9G8 Rabbit pAb

For Research Use Only. Not for Use in Diagnostic Procedures.

[Antibody](#) | [ELISA Kits](#) | [Protein](#) | [Reagents](#)