

14-3-3 ε Rabbit pAb

CatalogNo: YT0005

Orthogonal Validated 

Key Features

Host Species

- Rabbit

Reactivity

- Human, Mouse, Rat

Applications

- WB, IHC, IF, ELISA

MW

- 29kD (Observed)

Isotype

- IgG

Recommended Dilution Ratios

WB 1:500-1:2000**IHC 1:100-1:300****IF 1:200-1:1000****ELISA 1:20000****Not yet tested in other applications.**

Storage

Storage*

-15°C to -25°C/1 year (Do not lower than -25°C)

Formulation

Liquid in PBS containing 50% glycerol, 0.5% BSA and 0.02% sodium azide.

Basic Information

Clonality

Polyclonal

Immunogen Information

Immunogen

The antiserum was produced against synthesized peptide derived from human 14-3-3 epsilon. AA range: 206-255

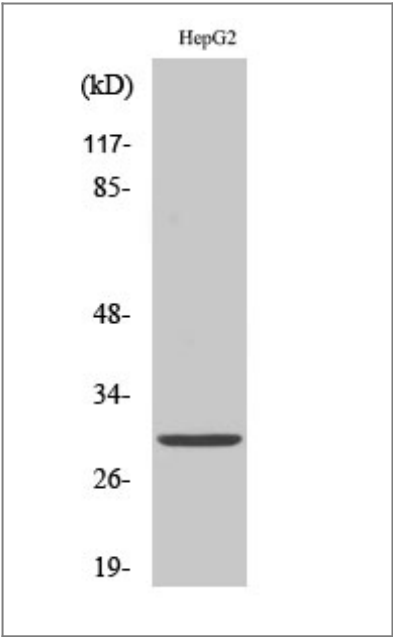
Specificity

14-3-3 ε Polyclonal Antibody detects endogenous levels of 14-3-3 ε protein.

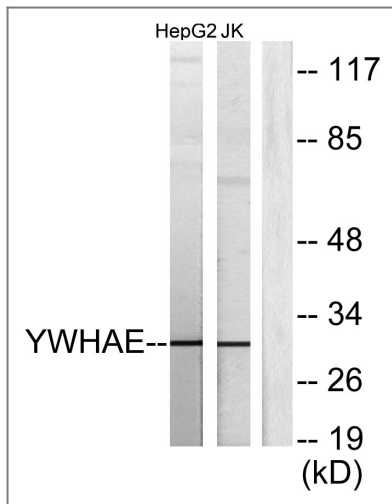
Target Information

Gene name	YWHAE		
Protein Name	14-3-3 protein epsilon		
	Organism	Gene ID	UniProt ID
	Human	7531 ;	P62258 ;
	Mouse	22627 ;	P62259 ;
	Rat	29753 ;	P62260 ;
Cellular Localization	Nucleus . Cytoplasm . Melanosome . Identified by mass spectrometry in melanosome fractions from stage I to stage IV. .		
Tissue specificity	B-cell lymphoma,Brain,Cajal		
Function	Function:Adapter protein implicated in the regulation of a large spectrum of both general and specialized signaling pathway. Binds to a large number of partners, usually by recognition of a phosphoserine or phosphothreonine motif. Binding generally results in the modulation of the activity of the binding partner.,similarity:Belongs to the 14-3-3 family.,subcellular location:Identified by mass spectrometry in melanosome fractions from stage I to stage IV.,subunit:Homodimer. Heterodimerizes with YWHAZ. Interacts with NDEL1, RGNEF and TIAM2 (By similarity). Interacts with HCV core protein. Interacts with ABL1 (phosphorylated form); the interaction retains it in the cytoplasm. Weakly interacts with CDKN1B.,		

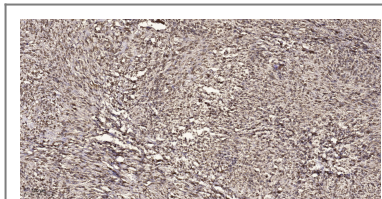
Validation Data



Western Blot analysis of various cells using 14-3-3 ε Polyclonal Antibody diluted at 1:1000



Western blot analysis of lysates from HepG2 and Jurkat cells, using 14-3-3 epsilon Antibody. The lane on the right is blocked with the synthesized peptide.



Immunohistochemical analysis of paraffin-embedded human small intestinal carcinoma tissue. 1, primary Antibody was diluted at 1:200 (4° overnight). 2, Sodium citrate pH 6.0 was used for antigen retrieval (>98°C, 20min). 3, Secondary antibody was diluted at 1:200

Contact information

Orders: order@immunoway.com
 Support: tech@immunoway.com
 Telephone: 877-594-3616 (Toll Free), 408-747-0185
 Website: <http://www.immunoway.com>
 Address: 2200 Ringwood Ave San Jose, CA 95131 USA



Please scan the QR code to access additional product information:
14-3-3 ε Rabbit pAb

For Research Use Only. Not for Use in Diagnostic Procedures.

[Antibody](#) | [ELISA Kits](#) | [Protein](#) | [Reagents](#)