

# GSK3 $\beta$ (Phospho Ser9) (6H6) Mouse mAb

CatalogNo: YP1886

## Key Features

### Host Species

- Mouse

### Reactivity

- Human, Mouse, Rat

### Applications

- IHC, WB

### MW

- 46kD (Observed)

## Storage

**Storage\*** -15°C to -25°C/1 year (Do not lower than -25°C)

**Formulation** Liquid in PBS containing 50% glycerol, 0.5% BSA and 0.02% sodium azide.

## Recommended Dilution Ratios

IHC 1:50-200

WB 1:1000-2000

## Basic Information

**Clonality** Monoclonal

**Clone Number** 6H6

## Immunogen Information

**Immunogen** Synthesized peptide derived from human Phospho-GSK3 $\beta$ (Ser9)

**Specificity** This antibody detects endogenous levels of Phospho-GSK3 $\beta$ (Ser9) at Human, Mouse, Rat

## Target Information

**Gene name** GSK3B

**Protein Name** Phospho-GSK3 $\beta$ (Ser9)

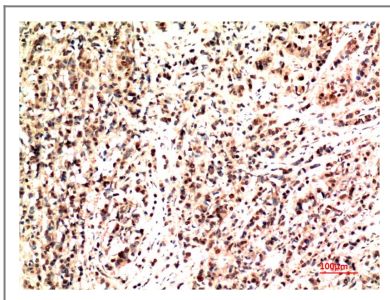
Organism	Gene ID	UniProt ID
Human	<a href="#">2932</a> ;	<a href="#">P49841</a> ;
Mouse	<a href="#">56637</a> ;	<a href="#">Q9WV60</a> ;
Rat	<a href="#">84027</a> ;	<a href="#">P18266</a> ;

**Cellular Localization** Cytoplasm . Nucleus . Cell membrane . The phosphorylated form shows localization to cytoplasm and cell membrane (PubMed:20937854). The MEMO1-RHOA-DIAPH1 signaling pathway controls localization of the phosphorylated form to the cell membrane (PubMed:20937854). .

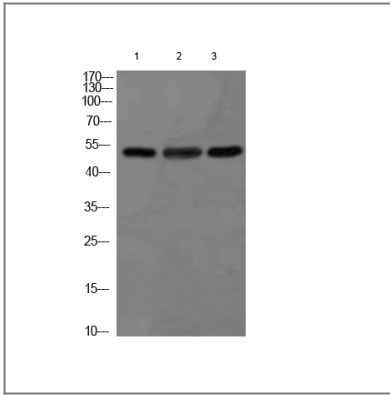
**Tissue specificity** Expressed in testis, thymus, prostate and ovary and weakly expressed in lung, brain and kidney. Colocalizes with EIF2AK2/PKR and TAU in the Alzheimer disease (AD) brain.

**Function** Catalytic activity:ATP + [tau protein] = ADP + [tau protein] phosphate.,enzyme regulation:Inhibited when phosphorylated by AKT1.,Function:Participates in the Wnt signaling pathway. Implicated in the hormonal control of several regulatory proteins including glycogen synthase, MYB and the transcription factor JUN. Phosphorylates JUN at sites proximal to its DNA-binding domain, thereby reducing its affinity for DNA. Phosphorylates MUC1 in breast cancer cells, and decreases the interaction of MUC1 with CTNNB1/beta-catenin.,PTM:Phosphorylated by AKT1 and ILK1.,similarity:Belongs to the protein kinase superfamily.,similarity:Belongs to the protein kinase superfamily. CMGC Ser/Thr protein kinase family. GSK-3 subfamily.,similarity:Contains 1 protein kinase domain.,subunit:Monomer (By similarity). Interacts with CABYR, MUC1, NIN and PRUNE.,tissue specificity:Expressed in testis, thymus, prostate and ovary and weakly expressed in lung, brain and kidney.,

## Validation Data



Immunohistochemical analysis of paraffin-embedded Human Lung Carcinoma Tissue using GSK3 $\beta$  Mouse mAb diluted at 1:200.



Western blot analysis of 1) Hela Cell Lysate, 2) Mouse Heart Tissue Lysate, 3) Rat Heart Tissue Lysate using GSK 3 $\beta$  Mouse mAb diluted at 1:1000.

## Contact information

Orders: [order@immunoway.com](mailto:order@immunoway.com)  
Support: [tech@immunoway.com](mailto:tech@immunoway.com)  
Telephone: 877-594-3616 (Toll Free), 408-747-0185  
Website: <http://www.immunoway.com>  
Address: 2200 Ringwood Ave San Jose, CA 95131 USA



Please scan the QR code to access additional product information:  
**GSK3 $\beta$  (Phospho Ser9) (6H6) Mouse mAb**

For Research Use Only. Not for Use in Diagnostic Procedures.

[Antibody](#) | [ELISA Kits](#) | [Protein](#) | [Reagents](#)