

ALOX5 (Phospho Ser663) Rabbit pAb

CatalogNo: YP1830

Key Features

Host Species

- Rabbit

Reactivity

- Human, Mouse, Rat

Applications

- IHC, WB

MW

- 78kD (Observed)

Storage

Storage* -15°C to -25°C/1 year (Do not lower than -25°C)

Formulation Liquid in PBS containing 50% glycerol, and 0.02% sodium azide.

Recommended Dilution Ratios

WB 1:500-2000

IHC 1:50-200

Basic Information

Clonality Polyclonal

Immunogen Information

Immunogen Synthesized peptide derived from human ALOX5 (Phospho Ser663)

Specificity This antibody detects endogenous levels of ALOX5 (Phospho Ser663) Rabbit pAb at Human, Mouse, Rat. The name of modified sites may be influenced by many factors, such as species (the modified site was not originally found in human samples) and the change of protein sequence (the previous protein sequence is incomplete, and the protein sequence may be prolonged with the development of protein sequencing technology). When naming, we will use the "numbers" in historical reference to keep the sites consistent with the reports. The antibody binds to the following modification sequence (lowercase letters are modification sites): YLSPD

| Target Information

Gene name ALOX5 LOG5

Protein Name Arachidonate 5-lipoxygenase (5-LO) (5-lipoxygenase) (EC 1.13.11.34)

Organism	Gene ID	UniProt ID
Human	240 ;	P09917 ;
Mouse	11689 ;	P48999 ;
Rat	25290 ;	P12527 ;

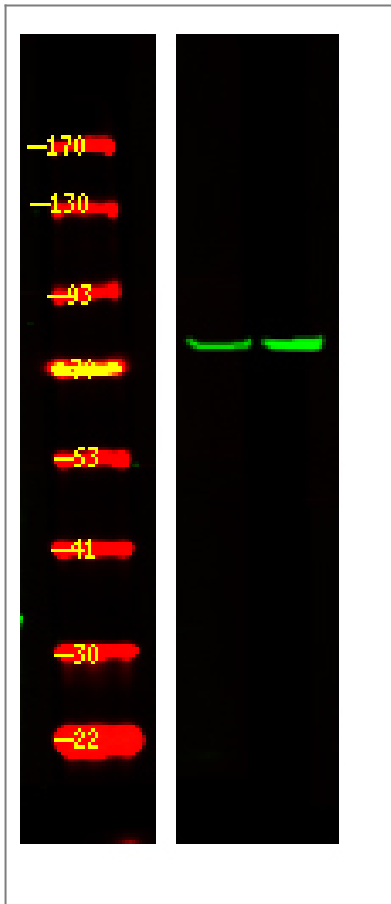
**Cellular
Localization**

Cytoplasm . Nucleus matrix . Nucleus membrane ; Peripheral membrane protein . Cytoplasm, perinuclear region . Cytoplasm, cytosol . Nucleus envelope . Nucleus intermembrane space . Shuttles between cytoplasm and nucleus (PubMed:19233132). Found exclusively in the nucleus, when phosphorylated on Ser-272 (PubMed:18978352). Calcium binding promotes translocation from the cytosol and the nuclear matrix to the nuclear envelope and membrane association (PubMed:19233132, PubMed:3118366, PubMed:8245774, PubMed:16275640). .

Function

Catalytic activity:Arachidonate + O(2) = leukotriene A(4) + H(2)O.,cofactor:Binds 1 iron ion per subunit.,cofactor:Binds 2 calcium ions per subunit.,Function:Catalyzes the first step in leukotriene biosynthesis, and thereby plays a role in inflammatory processes.,pathway:Lipid metabolism; leukotriene A4 biosynthesis.,PTM:Serine phosphorylation by MAPKAPK2 is stimulated by arachidonic acid. Phosphorylation on Ser-523 by PKA has an inhibitory effect. Phosphorylation on Ser-272 prevents export from the nucleus.,similarity:Belongs to the lipoxygenase family.,similarity:Contains 1 lipoxygenase domain.,similarity:Contains 1 PLAT domain.,subcellular location:Shuttles between cytoplasm and nucleus. Found exclusively in the nucleus, when phosphorylated on Ser-272. Calcium binding promotes translocation from the cytosol and the nuclear matrix to the nuclear envelope and membrane association.,subunit:Interacts with ALOX5AP and LTC4S.,

| Validation Data



Western Blot analysis of mouse brain ,using primary antibody at 1:1000 dilution. Secondary antibody(catalog#:RS23920) was diluted at 1:10000

Contact information

Orders: order@immunoway.com
Support: tech@immunoway.com
Telephone: 877-594-3616 (Toll Free), 408-747-0185
Website: <http://www.immunoway.com>
Address: 2200 Ringwood Ave San Jose, CA 95131 USA



Please scan the QR code to access additional product information:
ALOX5 (Phospho Ser663) Rabbit pAb

For Research Use Only. Not for Use in Diagnostic Procedures.

[Antibody](#) | [ELISA Kits](#) | [Protein](#) | [Reagents](#)