

# FGFR1/2 (Phospho Tyr730/733) Rabbit pAb

CatalogNo: YP1827

## Key Features

### Host Species

- Rabbit

### Reactivity

- Human, Mouse, Rat

### Applications

- IHC, WB

### MW

- 120kD (Observed)

## Storage

**Storage\*** -15°C to -25°C/1 year (Do not lower than -25°C)

**Formulation** Liquid in PBS containing 50% glycerol, and 0.02% sodium azide.

## Recommended Dilution Ratios

**WB 1:500-2000**

**IHC 1:50-200**

## Basic Information

**Clonality** Polyclonal

## Immunogen Information

**Immunogen** Synthesized peptide derived from human FGFR1/2 (Phospho Tyr730/733)

**Specificity** This antibody detects endogenous levels of FGF Receptor1/2 only when phosphorylated at Human:Y730/733, Mouse:Y730/733, Rat:Y730/-. The name of modified sites may be influenced by many factors, such as species (the modified site was not originally found in human samples) and the change of protein sequence (the previous protein sequence is incomplete, and the protein sequence may be prolonged with the development of protein sequencing technology). When naming, we will use the "numbers" in historical reference to keep the sites consistent with the reports. The antibody binds to the following modification sequence (lowercase letters are modification sites):ELYMM

## Target Information

**Gene name** FGFR1 BFGFR CEK FGFBR FLG FLT2 HBGFR FGFR2 BEK

**Protein Name** Fibroblast growth factor receptor 1/2

Organism	Gene ID	UniProt ID
Human	<a href="#">2260</a> ; <a href="#">2263</a> ;	<a href="#">P11362</a> ; <a href="#">P21802</a> ;
Mouse	<a href="#">14182</a> ; <a href="#">14183</a> ;	<a href="#">P16092</a> ;
Rat	<a href="#">79114</a> ;	<a href="#">Q04589</a> ;

### Cellular Localization

Cell membrane; Single-pass type I membrane protein. Nucleus. Cytoplasm, cytosol. Cytoplasmic vesicle. After ligand binding, both receptor and ligand are rapidly internalized. Can translocate to the nucleus after internalization, or by translocation from the endoplasmic reticulum or Golgi apparatus to the cytosol, and from there to the nucleus.

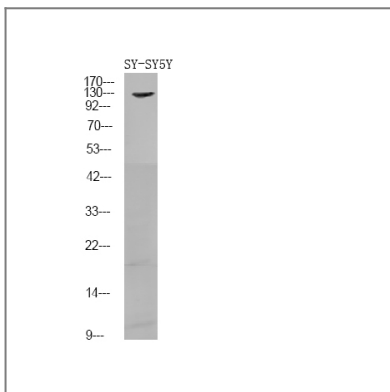
### Tissue specificity

Detected in astrocytoma, neuroblastoma and adrenal cortex cell lines. Some isoforms are detected in foreskin fibroblast cell lines, however isoform 17, isoform 18 and isoform 19 are not detected in these cells.

### Function

Receptor for basic fibroblast growth factor. Receptor for FGF23 in the presence of KL (By similarity). A shorter form of the receptor could be a receptor for FGF1 (aFGF). Receptor for acidic and basic fibroblast growth factors.

## Validation Data



Western Blot analysis of SY-SY5Y using primary antibody at 1:1000 dilution 4°C, overnight. Secondary antibody(catalog#:RS23920) was diluted at 1:10000 25°C, 1.5hours

## Contact information

Orders: order@immunoway.com  
Support: tech@immunoway.com  
Telephone: 877-594-3616 (Toll Free), 408-747-0185  
Website: http://www.immunoway.com  
Address: 2200 Ringwood Ave San Jose, CA 95131 USA



Please scan the QR code to access additional product information:  
**FGFR1/2 (Phospho Tyr730/733) Rabbit pAb**

---

For Research Use Only. Not for Use in Diagnostic Procedures.

[Antibody](#) | [ELISA Kits](#) | [Protein](#) | [Reagents](#)