

# Leptin Receptor (Phospho Tyr986) Rabbit pAb

CatalogNo: YP1805

Orthogonal Validated 

## Key Features

### Host Species

- Rabbit

### Reactivity

- Human, Mouse, Rat

### Applications

- IHC, WB

### MW

- 132kD (Observed)

## Storage

**Storage\*** -15°C to -25°C/1 year (Do not lower than -25°C)

**Formulation** Liquid in PBS containing 50% glycerol, and 0.02% sodium azide.

## Recommended Dilution Ratios

**WB 1:500-2000**

**IHC 1:50-200**

## Basic Information

**Clonality** Polyclonal

## Immunogen Information

**Immunogen** Synthesized peptide derived from human Leptin Receptor (Phospho Tyr986)

**Specificity** This antibody detects endogenous levels of Leptin Receptor (Phospho Tyr986) Rabbit pAb at Human, Mouse, Rat. The name of modified sites may be influenced by many factors, such as species (the modified site was not originally found in human samples) and the change of protein sequence (the previous protein sequence is incomplete, and the protein sequence may be prolonged with the development of protein sequencing technology). When naming, we will use the "numbers" in historical reference to keep the sites consistent with the reports. The antibody binds to the following modification sequence (lowercase letters are modification sites): VKyAT

---

## | Target Information

**Gene name** LEPR DB OBR

**Protein Name** Leptin receptor (LEP-R) (HuB219) (OB receptor) (OB-R) (CD antigen CD295)

Organism	Gene ID	UniProt ID
Human	<a href="#">3953</a> ;	<a href="#">P48357</a> ;
Mouse	<a href="#">16847</a> ;	<a href="#">P48356</a> ;
Rat	<a href="#">24536</a> ;	<a href="#">Q62959</a> ;

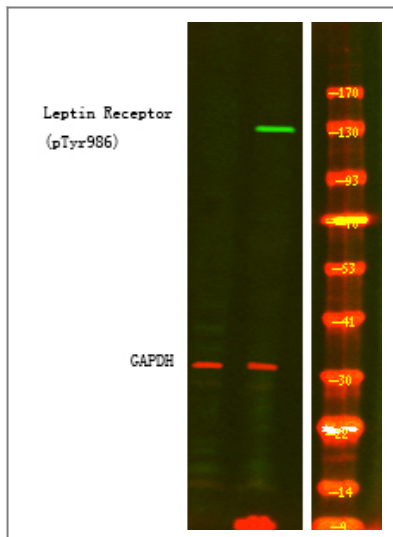
**Cellular Localization** Cell membrane ; Single-pass type I membrane protein . Basolateral cell membrane . ; [Isoform E]: Secreted .

**Tissue specificity** Isoform A is expressed in fetal liver and in hematopoietic tissues and choroid plexus. In adults highest expression in heart, liver, small intestine, prostate and ovary. Low level in lung and kidney. Isoform B is highly expressed in hypothalamus, but also in skeletal muscle. Detected in fundic and antral epithelial cells of the gastric mucosa (PubMed:19159218). Isoform B and isoform A are expressed by NK cells (at protein level) (PubMed:12504075).

**Function** Domain:The box 1 motif is required for JAK interaction and/or activation.,Domain:The cytoplasmic domain may be essential for intracellular signal transduction by activation of JAK tyrosine kinase and STATs.,Domain:The WSXWS motif appears to be necessary for proper protein folding and thereby efficient intracellular transport and cell-surface receptor binding.,Function:Receptor for obesity factor (leptin). On ligand binding, mediates signaling through JAK2/STAT3. Involved in the regulation of fat metabolism and, in a hematopoietic pathway, required for normal lymphopoiesis. May play a role in reproduction. Can also mediate the ERK/FOS signaling pathway.,PTM:On ligand binding, phosphorylated on two conserved C-terminal tyrosine residues (isoform B only) by JAK2. Tyr-986 is required for complete binding and activation of PTPN11, ERK/FOS activation and, for interaction with SOCS3 (By similarity). Phosphorylation on Tyr-1141 is required for STAT3 binding/activation.,similarity:Belongs to the type I cytokine receptor family. Type 2 subfamily.,similarity:Contains 1 Ig-like (immunoglobulin-like) domain.,similarity:Contains 4 fibronectin type-III domains.,subunit:On leptin stimulation, homodimerizes. The phosphorylated receptor binds a number of SH2 domain-containing proteins such as STAT3, PTPN11, and SOCS3 (By similarity). Interaction with SOCS3 inhibits LRb signaling.,tissue specificity:Isoform A is expressed in fetal liver and in hematopoietic tissues and choroid plexus. In adults highest expression in heart, liver, small intestine, prostate and ovary. Low level in lung and kidney. Isoform B is highly expressed in hypothalamus.,

---

## | Validation Data



Western Blot analysis of 1 HeLa cell, 2 LPS 100ng/mL 30min treated, using primary antibody at 1:1000 dilution. Secondary antibody(catalog#:RS23920) was diluted at 1:10000

## Contact information

Orders: [order@immunoway.com](mailto:order@immunoway.com)  
Support: [tech@immunoway.com](mailto:tech@immunoway.com)  
Telephone: 877-594-3616 (Toll Free), 408-747-0185  
Website: <http://www.immunoway.com>  
Address: 2200 Ringwood Ave San Jose, CA 95131 USA



Please scan the QR code to access additional product information:  
**Leptin Receptor (Phospho Tyr986) Rabbit pAb**

For Research Use Only. Not for Use in Diagnostic Procedures.

[Antibody](#) | [ELISA Kits](#) | [Protein](#) | [Reagents](#)