

HSP105 (Phospho Ser809) Rabbit pAb

CatalogNo: YP1791 **Orthogonal Validated** 

Key Features

Host Species

- Rabbit

Reactivity

- Human, Mouse, Rat

Applications

- WB

MW

- 94kD (Calculated)

Isotype

- IgG

Storage

Storage* -15°C to -25°C/1 year (Do not lower than -25°C)**Formulation** Liquid in PBS containing 50% glycerol, 0.5% BSA and 0.02% sodium azide.

Recommended Dilution Ratios

WB 1:500-2000

Basic Information

Clonality Polyclonal

Immunogen Information

Immunogen Synthesized peptide derived from human HSP105 (Phospho-Ser809)

Specificity This antibody detects endogenous levels of HSP105 (Phospho-Ser809) at Human, Mouse, Rat. The name of modified sites may be influenced by many factors, such as species (the modified site was not originally found in human samples) and the change of protein sequence (the previous protein sequence is incomplete, and the protein sequence may be prolonged with the development of protein sequencing technology). When naming, we will use the "numbers" in historical reference to keep the sites consistent with the reports. The antibody binds to the following modification sequence (lowercase letters are modification sites): IESPK

Target Information

Gene name HSPH1 HSP105 HSP110 KIAA0201

Protein Name HSP105 (Phospho-Ser809)

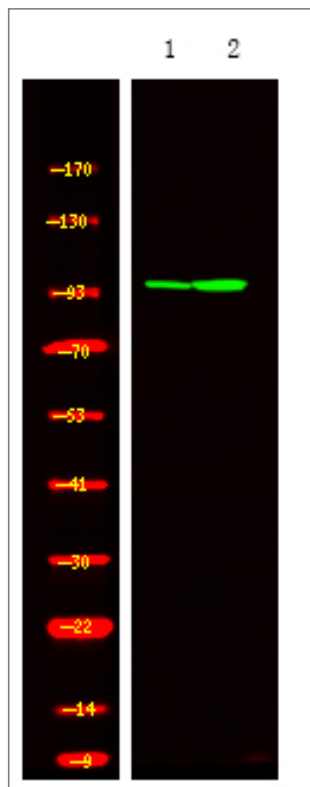
Organism	Gene ID	UniProt ID
Human	10808;	Q92598;
Mouse	15505;	Q61699;
Rat	288444;	Q66HA8;

Cellular Localization Cytoplasm .

Tissue specificity Highly expressed in testis. Present at lower levels in most brain regions, except cerebellum. Overexpressed in cancer cells.

Function Function:Prevents the aggregation of denatured proteins in cells under severe stress, on which the ATP levels decrease markedly. Inhibits HSPA8/HSC70 ATPase and chaperone activities.,PTM:Phosphorylation on Ser-509 may be important for regulation of the HSPA8/HSC70 chaperone activity.,similarity:Belongs to the heat shock protein 70 family.,subunit:Interacts with HSPA8/HSC70.,tissue specificity:Highly expressed in testis. Present at lower levels in most brain regions, except cerebellum. Overexpressed in cancer cells.,

Validation Data



Western Blot analysis of MCF7 cell, 2, LPS 100ng/mL 30min treated ,using primary antibody at 1:1000 dilution. Secondary antibody(catalog#:RS23920) was diluted at 1:10000

| Contact information

Orders: order@immunoway.com
Support: tech@immunoway.com
Telephone: 877-594-3616 (Toll Free), 408-747-0185
Website: <http://www.immunoway.com>
Address: 2200 Ringwood Ave San Jose, CA 95131 USA



Please scan the QR code to access additional product information:
HSP105 (Phospho Ser809) Rabbit pAb

For Research Use Only. Not for Use in Diagnostic Procedures.

[Antibody](#) | [ELISA Kits](#) | [Protein](#) | [Reagents](#)