

# GRK1/2 (Phospho Tyr13) Rabbit pAb

CatalogNo: YP1789 Orthogonal Validated 

## Key Features

### Host Species

- Rabbit

### Reactivity

- Human, Mouse, Rat

### Applications

- WB

### MW

- 76kD (Calculated)

### Isotype

- IgG

## Storage

**Storage\*** -15°C to -25°C/1 year (Do not lower than -25°C)

**Formulation** Liquid in PBS containing 50% glycerol, 0.5% BSA and 0.02% sodium azide.

## Recommended Dilution Ratios

**WB 1:500-2000**

## Basic Information

**Clonality** Polyclonal

## Immunogen Information

**Immunogen** Synthesized peptide derived from human GRK1/2 (Phospho-Tyr13)

**Specificity** This antibody detects endogenous levels of GRK1/2 (Phospho-Tyr13) at Human, Mouse, Rat. The name of modified sites may be influenced by many factors, such as species (the modified site was not originally found in human samples) and the change of protein sequence (the previous protein sequence is incomplete, and the protein sequence may be prolonged with the development of protein sequencing technology). When naming, we will use the "numbers" in historical reference to keep the sites consistent with the reports. The antibody binds to the following modification sequence (lowercase letters are modification sites): VSyLM

---

## | Target Information

**Gene name** ADRBK1 BARK BARK1 GRK2

**Protein Name** GRK1/2 (Phospho-Tyr13)

Organism	Gene ID	UniProt ID
Human	<a href="#">156</a> ;	<a href="#">P25098</a> ;
Mouse		<a href="#">Q99MK8</a> ;
Rat	<a href="#">25238</a> ;	<a href="#">P26817</a> ;

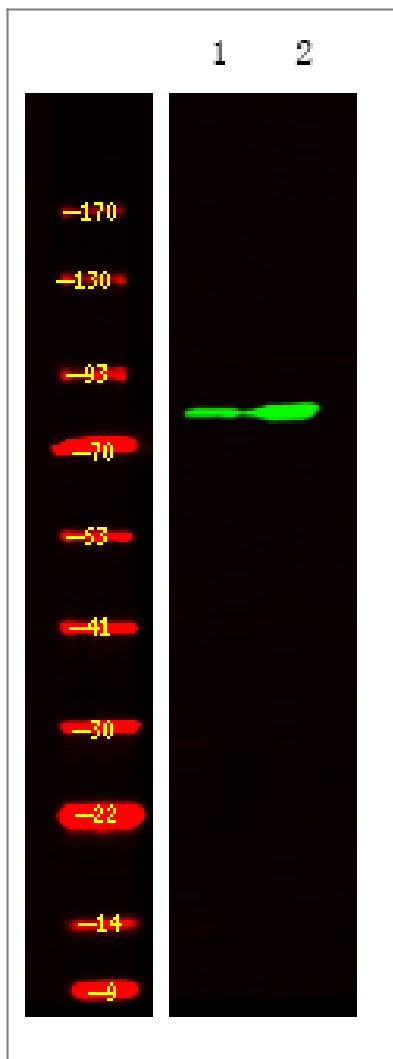
**Cellular Localization** Cytoplasm . Cell membrane . Cell junction, synapse, postsynapse . Cell junction, synapse, presynapse .

**Tissue specificity** Expressed in peripheral blood leukocytes.

**Function** Catalytic activity:ATP + [beta-adrenergic receptor] = ADP + [beta-adrenergic receptor] phosphate.,Catalytic activity:ATP + a protein = ADP + a phosphoprotein.,Function:Specifically phosphorylates the agonist-occupied form of the beta-adrenergic and closely related receptors, probably inducing a desensitization of them.,online information:Beta adrenergic receptor kinase entry,similarity:Belongs to the protein kinase superfamily. AGC Ser/Thr protein kinase family. GPRK subfamily.,similarity:Contains 1 AGC-kinase C-terminal domain.,similarity:Contains 1 PH domain.,similarity:Contains 1 protein kinase domain.,similarity:Contains 1 RGS domain.,subunit:Interacts with GIT1 (By similarity). Interacts with, and phosphorylates chemokine-stimulated CCR5.,tissue specificity:Expressed in peripheral blood leukocytes.,

---

## | Validation Data



Western Blot analysis of 1 Jurkat cell, 2, LPS 100ng/mL 30min treated, using primary antibody at 1:1000 dilution. Secondary antibody (catalog#:RS23920) was diluted at 1:10000

## Contact information

Orders: [order@immunoway.com](mailto:order@immunoway.com)  
 Support: [tech@immunoway.com](mailto:tech@immunoway.com)  
 Telephone: 877-594-3616 (Toll Free), 408-747-0185  
 Website: <http://www.immunoway.com>  
 Address: 2200 Ringwood Ave San Jose, CA 95131 USA



Please scan the QR code to access additional product information:  
**GRK1/2 (Phospho Tyr13) Rabbit pAb**

For Research Use Only. Not for Use in Diagnostic Procedures.

[Antibody](#) | [ELISA Kits](#) | [Protein](#) | [Reagents](#)