

eIF5 (Phospho Ser389/390) Rabbit pAb

CatalogNo: YP1773

Key Features

Host Species

- Rabbit

Reactivity

- Human, Mouse, Rat

Applications

- WB

MW

- 50kD (Observed)

Isotype

- IgG

Storage

Storage* -15°C to -25°C/1 year (Do not lower than -25°C)

Formulation Liquid in PBS containing 50% glycerol, 0.5% BSA and 0.02% sodium azide.

Recommended Dilution Ratios

WB 1:500-2000

Basic Information

Clonality Polyclonal

Immunogen Information

Immunogen Synthesized peptide derived from human EIF5 (Phospho-Ser389+Ser390)

Specificity This antibody detects endogenous levels of EIF5 only when phosphorylated at S389 or S390 and dually phosphorylated at two sites. The name of modified sites may be influenced by many factors, such as species (the modified site was not originally found in human samples) and the change of protein sequence (the previous protein sequence is incomplete, and the protein sequence may be prolonged with the development of protein sequencing technology). When naming, we will use the "numbers" in historical reference to keep the sites consistent with the reports. The antibody binds to the following modification sequence (lowercase letters are modification sites): EssGG

Target Information

Gene name EIF5

Protein Name EIF5 (Phospho-Ser389+Ser390)

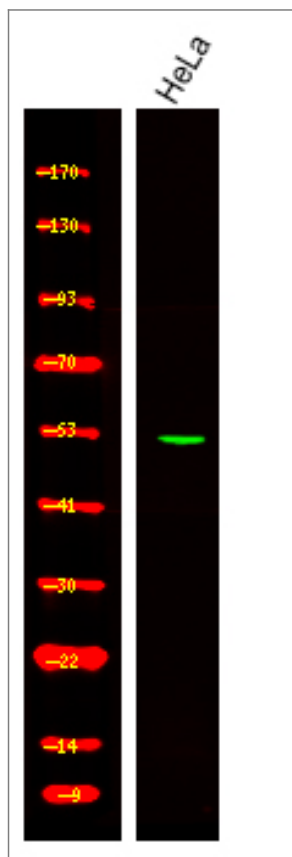
Organism	Gene ID	UniProt ID
Human	1983 ;	P55010 ;
Mouse	217869 ;	P59325 ;
Rat	56783 ;	Q07205 ;

Cellular Localization nucleus,cytoplasm,cytosol,plasma membrane,cell-cell adherens junction,

Tissue specificity Brain,Epithelium,Lymph,Pooled,Uterus,

Function Function:Catalyzes the hydrolysis of GTP bound to the 40S ribosomal initiation complex (40S.mRNA.Met-tRNA[F].eIF-2.GTP) with the subsequent joining of a 60S ribosomal subunit resulting in the release of eIF-2 and the guanine nucleotide. The subsequent joining of a 60S ribosomal subunit results in the formation of a functional 80S initiation complex (80S.mRNA.Met-tRNA[F]).,similarity:Belongs to the eIF-2-beta/eIF-5 family.,similarity:Contains 1 W2 domain.,

Validation Data



Western Blot analysis of various,using primary antibody at 1:1000 dilution. Secondary antibody(catalog#:RS23920) was diluted at 1:10000

Contact information

Orders: order@immunoway.com
Support: tech@immunoway.com
Telephone: 877-594-3616 (Toll Free), 408-747-0185
Website: <http://www.immunoway.com>
Address: 2200 Ringwood Ave San Jose, CA 95131 USA



Please scan the QR code to access additional product information:
eIF5 (Phospho Ser389/390) Rabbit pAb

For Research Use Only. Not for Use in Diagnostic Procedures.

[Antibody](#) | [ELISA Kits](#) | [Protein](#) | [Reagents](#)