

MAZ (Phospho Thr72) Rabbit pAb

CatalogNo: YP1770

Key Features

Host Species

- Rabbit

Reactivity

- Human, Mouse, Rat

Applications

- WB

MW

- 52kD (Calculated)

Isotype

- IgG

Storage

Storage* -15°C to -25°C/1 year (Do not lower than -25°C)

Formulation Liquid in PBS containing 50% glycerol, 0.5% BSA and 0.02% sodium azide.

Recommended Dilution Ratios

WB 1:500-2000

Basic Information

Clonality Polyclonal

Immunogen Information

Immunogen Synthesized peptide derived from human MAZ (Phospho-Thr72)

Specificity This antibody detects endogenous levels of MAZ (Phospho-Thr72) at Human, Mouse, Rat. The name of modified sites may be influenced by many factors, such as species (the modified site was not originally found in human samples) and the change of protein sequence (the previous protein sequence is incomplete, and the protein sequence may be prolonged with the development of protein sequencing technology). When naming, we will use the "numbers" in historical reference to keep the sites consistent with the reports. The antibody binds to the following modification sequence (lowercase letters are modification sites): PpTPQ

| Target Information

Gene name MAZ ZNF801

Protein Name MAZ (Phospho-Thr72)

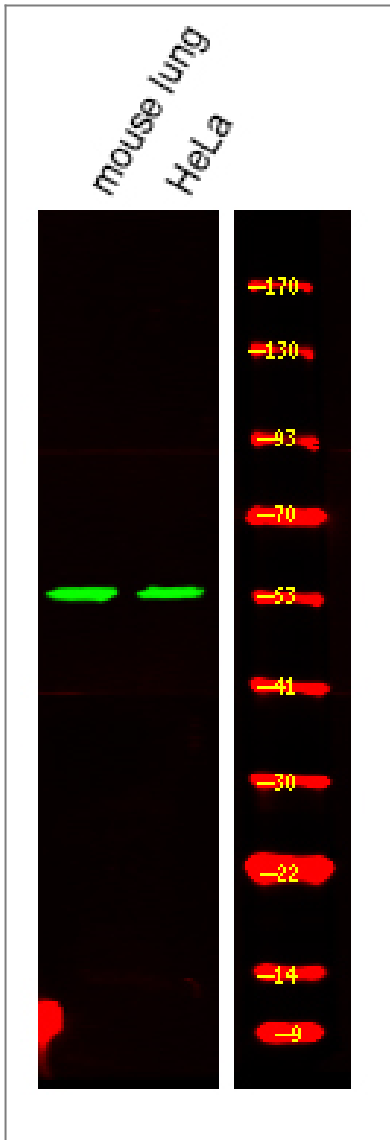
Organism	Gene ID	UniProt ID
Human	4150 ;	P56270 ;
Mouse		P56671 ;

Cellular Localization Nucleus . In brains of Alzheimer disease patients, present in a plaque-like structures.

Tissue specificity Present in kidney, liver and brain. In the brain, highest levels are found in motor cortex and midfrontal cortex (at protein level). ; [Isoform 1]: Expressed in the heart, brain, placenta, lung, liver, skeletal muscle and weakly expressed in the kidney (PubMed:1502157). Expressed in the joint synovium (PubMed:19583771).

Function Function:May function as a transcription factor with dual roles in transcription initiation and termination. Binds to two sites, ME1a1 and ME1a2, within the c-myc promoter having greater affinity for the former. Also binds to multiple G/C-rich sites within the promoter of the Sp1 family of transcription factors.,similarity:Contains 6 C2H2-type zinc fingers.,subcellular location:In brains of Alzheimer disease patients, present in a plaque-like structures.,subunit:Interacts with BPTF.,tissue specificity:Present in kidney, liver and brain. In the brain, highest levels are found in motor cortex and midfrontal cortex (at protein level),.

| Validation Data



Western Blot analysis of various, using primary antibody at 1:1000 dilution. Secondary antibody (catalog#:RS23920) was diluted at 1:10000

Contact information

Orders: order@immunoway.com
 Support: tech@immunoway.com
 Telephone: 877-594-3616 (Toll Free), 408-747-0185
 Website: <http://www.immunoway.com>
 Address: 2200 Ringwood Ave San Jose, CA 95131 USA



Please scan the QR code to access additional product information:
MAZ (Phospho Thr72) Rabbit pAb

For Research Use Only. Not for Use in Diagnostic Procedures.

[Antibody](#) | [ELISA Kits](#) | [Protein](#) | [Reagents](#)