

CLSPN (Phospho Ser30) Rabbit pAb

CatalogNo: YP1768

Key Features

Host Species

- Rabbit

Reactivity

- Human, Mouse, Rat

Applications

- WB

MW

- 147kD (Calculated)

Isotype

- IgG

Storage

Storage* -15°C to -25°C/1 year (Do not lower than -25°C)

Formulation Liquid in PBS containing 50% glycerol, 0.5% BSA and 0.02% sodium azide.

Recommended Dilution Ratios

WB 1:500-2000

Basic Information

Clonality Polyclonal

Immunogen Information

Immunogen Synthesized peptide derived from human Claspin (Phospho-Ser30)

Specificity This antibody detects endogenous levels of Claspin (Phospho-Ser30) at Human, Mouse, Rat. The name of modified sites may be influenced by many factors, such as species (the modified site was not originally found in human samples) and the change of protein sequence (the previous protein sequence is incomplete, and the protein sequence may be prolonged with the development of protein sequencing technology). When naming, we will use the "numbers" in historical reference to keep the sites consistent with the reports. The antibody binds to the following modification sequence (lowercase letters are modification sites): DsGQG

| Target Information

Gene name CLSPN

Protein Name Claspin (hClaspin)

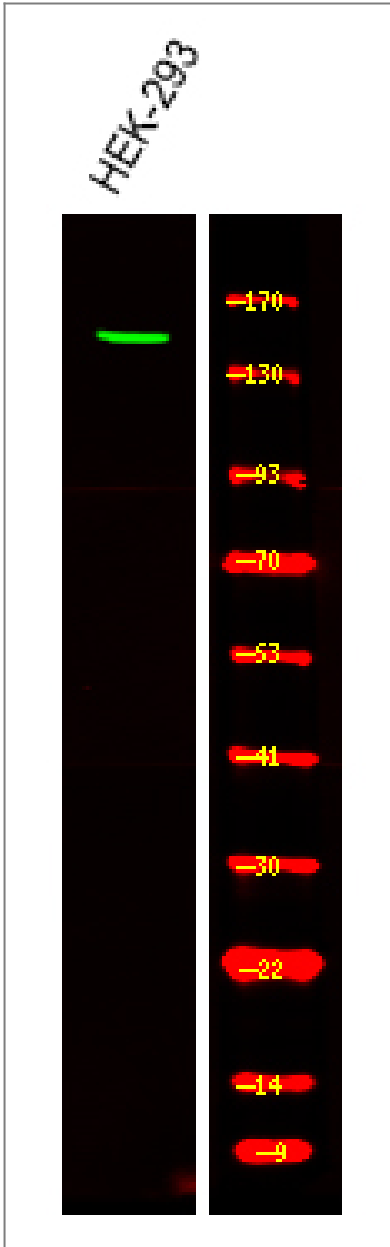
Organism	Gene ID	UniProt ID
Human	63967 ;	Q9HAW4 ;
Mouse	269582 ;	Q80YR7 ;

Cellular Localization Nucleus .

Tissue specificity Bone marrow,Epithelium,PCR rescued clones,Skin,

Function Domain:The C-terminus of the protein contains 3 potential CHEK1-binding motifs (CKB motifs). Potential phosphorylation sites within CKB motif 1 and CKB motif 2 are required for interaction with CHEK1.,Function:Required for checkpoint mediated cell cycle arrest in response to inhibition of DNA replication or to DNA damage induced by both ionizing and UV irradiation. Adapter protein which binds to BRCA1 and the checkpoint kinase CHEK1 and facilitates the ATR-dependent phosphorylation of both proteins. Can also bind specifically to branched DNA structures and may associate with S-phase chromatin following formation of the pre-replication complex (pre-RC). This may indicate a role for this protein as a sensor which monitors the integrity of DNA replication forks.,induction:Expression peaks at S/G2 phases of the cell cycle.,PTM:Phosphorylated during activation of DNA replication or DNA damage checkpoints. This requires ATR.,sequence Caution:Contaminating sequence. Potential poly-A sequence.,similarity:Belongs to the claspin family.,subunit:Interacts with CHEK1 when phosphorylated. Interacts with ATR and RAD9A and these interactions are slightly reduced during checkpoint activation. Interacts with BRCA1 and this interaction increases during checkpoint activation. Interacts with TIMELESS.,

| Validation Data



Western Blot analysis of various,using primary antibody at 1:1000 dilution. Secondary antibody (catalog#:RS23920) was diluted at 1:10000

Contact information

Orders: order@immunoway.com
Support: tech@immunoway.com
Telephone: 877-594-3616 (Toll Free), 408-747-0185
Website: <http://www.immunoway.com>
Address: 2200 Ringwood Ave San Jose, CA 95131 USA



Please scan the QR code to access additional product information:
CLSPN (Phospho Ser30) Rabbit pAb