

## SLAM (Phospho Tyr327) Rabbit pAb

CatalogNo: YP1764

### Key Features

#### Host Species

- Rabbit

#### Reactivity

- Human, Mouse, Rat

#### Applications

- WB

#### MW

- 37kD (Calculated)

#### Isotype

- IgG

### Storage

**Storage\*** -15°C to -25°C/1 year (Do not lower than -25°C)

**Formulation** Liquid in PBS containing 50% glycerol, 0.5% BSA and 0.02% sodium azide.

### Recommended Dilution Ratios

**WB 1:500-2000**

### Basic Information

**Clonality** Polyclonal

### Immunogen Information

**Immunogen** Synthesized peptide derived from human SLAM (Phospho-Tyr327)

**Specificity** This antibody detects endogenous levels of SLAM (Phospho-Tyr327) at Human, Mouse, Rat. The name of modified sites may be influenced by many factors, such as species (the modified site was not originally found in human samples) and the change of protein sequence (the previous protein sequence is incomplete, and the protein sequence may be prolonged with the development of protein sequencing technology). When naming, we will use the "numbers" in historical reference to keep the sites consistent with the reports. The antibody binds to the following modification sequence (lowercase letters are modification sites): TVyAS

---

## | Target Information

**Gene name** SLAMF1 SLAM

**Protein Name** CD150 (Phospho-Tyr327)

Organism	Gene ID	UniProt ID
Human	<a href="#">6504</a> ;	<a href="#">Q13291</a> ;
Mouse	<a href="#">27218</a> ;	<a href="#">Q9QUM4</a> ;

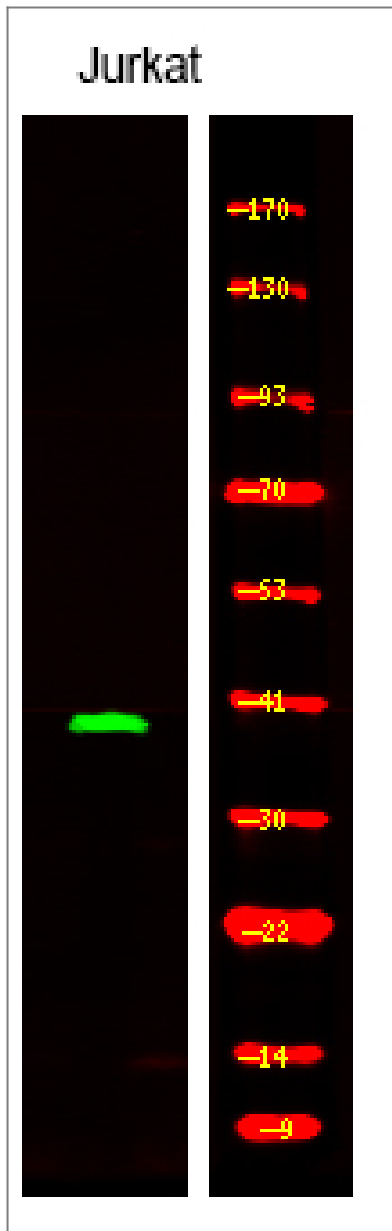
**Cellular Localization** Cell membrane ; Single-pass type I membrane protein. Present on the surface of B-cells and T-cells. Located at the plasma membrane contacts between neighboring T-cells (PubMed:11806999). .; [Isoform 3]: Secreted .; [Isoform 4]: Cell membrane . Overexpressed isoform 4 is detected on the cell surface. In glioma cell lines endogenous isoform 4 is detected predominantly in the cytoplasm and colocalized with endoplasmic reticulum and Golgi markers. .

**Tissue specificity** Constitutively expressed on peripheral blood memory T-cells, T-cell clones, immature thymocytes and a proportion of B-cells, and is rapidly induced on naive T-cells after activation (PubMed:7617038). Activated B-cells express isoform 1, isoform 3 and a cytoplasmic isoform (PubMed:9091591). Isoform 4 is expressed in B-cells, primary T-cells, dendritic cells and macrophages. Isoform 4 is expressed in tumors of the central nervous system (PubMed:25710480).

**Function** Domain:The most membrane-proximal SH2-binding motif interacts with SH2 domain of SH2D1A and does not need to be phosphorylated on tyrosine residues.,Function:High-affinity self-ligand important in bidirectional T-cell to B-cell stimulation. SLAM-induced signal-transduction events in T-lymphocytes are different from those in B-cells. Two modes of SLAM signaling are likely to exist: one in which the inhibitor SH2D1A acts as a negative regulator and another in which protein-tyrosine phosphatase 2C (PTPN11)-dependent signal transduction operates.,PTM:Phosphorylated by FYN.,similarity:Contains 1 Ig-like C2-type (immunoglobulin-like) domain.,similarity:Contains 1 Ig-like V-type (immunoglobulin-like) domain.,subcellular location:Present on the surface of B-cells and T-cells.,subunit:Its cytoplasmic domain interacts with SH2 domain protein 1A (SH2D1A), and with PTPN11. Interacts with INPP5D/SHIP1. Binds to Measles virus HN protein and acts as a receptor for this virus.,tissue specificity:Constitutively expressed on peripheral blood memory T-cells, T-cell clones, immature thymocytes, and a proportion of B-cells, and is rapidly induced on naive T-cells after activation.,

---

## | Validation Data



Western Blot analysis of various, using primary antibody at 1:1000 dilution. Secondary antibody (catalog#:RS23920) was diluted at 1:10000

## Contact information

Orders: [order@immunoway.com](mailto:order@immunoway.com)  
 Support: [tech@immunoway.com](mailto:tech@immunoway.com)  
 Telephone: 877-594-3616 (Toll Free), 408-747-0185  
 Website: <http://www.immunoway.com>  
 Address: 2200 Ringwood Ave San Jose, CA 95131 USA



Please scan the QR code to access additional product information:  
**SLAM (Phospho Tyr327) Rabbit pAb**