

INCENP (Phospho Thr59) Rabbit pAb

CatalogNo: YP1759

Key Features

Host Species

- Rabbit

Reactivity

- Human, Mouse, Rat

Applications

- WB

MW

- 101kD (Calculated)

Isotype

- IgG

Storage

Storage* -15°C to -25°C/1 year (Do not lower than -25°C)

Formulation Liquid in PBS containing 50% glycerol, 0.5% BSA and 0.02% sodium azide.

Recommended Dilution Ratios

WB 1:500-2000

Basic Information

Clonality Polyclonal

Immunogen Information

Immunogen Synthesized peptide derived from human INCENP (Phospho-Thr59)

Specificity This antibody detects endogenous levels of INCENP (Phospho-Thr59) at Human, Mouse, Rat. The name of modified sites may be influenced by many factors, such as species (the modified site was not originally found in human samples) and the change of protein sequence (the previous protein sequence is incomplete, and the protein sequence may be prolonged with the development of protein sequencing technology). When naming, we will use the "numbers" in historical reference to keep the sites consistent with the reports. The antibody binds to the following modification sequence (lowercase letters are modification sites): PKtPS

| Target Information

Gene name INCENP

Protein Name Inner centromere protein

Organism	Gene ID	UniProt ID
Human	3619 ;	Q9NQS7 ;
Mouse	16319 ;	Q9WU62 ;

Cellular Localization

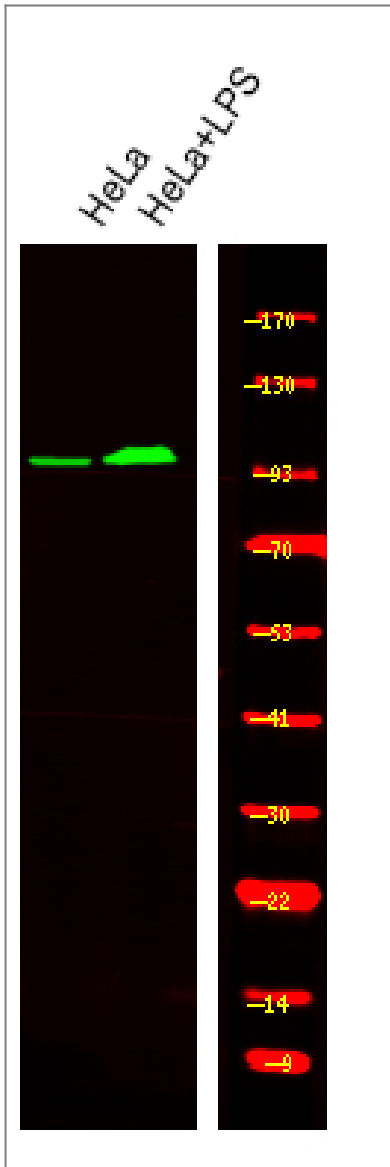
Nucleus . Chromosome, centromere . Cytoplasm, cytoskeleton, spindle . Midbody . Chromosome, centromere, kinetochore . Colocalized at synaptonemal complex central element from zygotene up to late pachytene when it begins to relocalize to heterochromatic chromocenters. Colocalizes with AURKB at a connecting strand traversing the centromere region and joining sister kinetochores, in metaphase II centromeres. This strand disappears at the metaphase II/anaphase II transition and relocalizes to the spindle midzone (By similarity). Colocalizes with AURKB at mitotic chromosomes (PubMed:11453556). Localizes to inner kinetochore (PubMed:16760428). Localizes on chromosome arms and inner centromeres from prophase through metaphase and then transferring to the spindle midzone and midbody from anaphase through cytokinesis (PubMed:15316025). Cocalizes to the equatorial cell cortex at anaphase (PubMed:11453556) .

Tissue specificity Epithelium,Lung,Testis,

Function

Caution:PubMed:11139336 experiments have been carried out partly in chicken and partly in human.,Function:Component of the chromosomal passenger complex (CPC), a complex that acts as a key regulator of mitosis. The CPC complex has essential functions at the centromere in ensuring correct chromosome alignment and segregation and is required for chromatin-induced microtubule stabilization and spindle assembly. Probably acts through association with AURKB or AURKC. Seems to bind directly to microtubules.,similarity:Belongs to the INCENP family.,subcellular location:Localizes on chromosome arms and inner centromeres from prophase through metaphase and then transferring to the spindle midzone and midbody from anaphase through cytokinesis. Colocalizes with AURKB at mitotic chromosomes.,subunit:Homodimer or heterodimer. Interacts with H2AFZ (By similarity). Interacts with CBX3. Interacts with tubulin beta chain. Interacts with AURKB and AURKC. Component of the CPC at least composed of BIRC5/survivin, CDCA8/borealin, INCENP and AURKB/Aurora-B. Interacts with EVI5.,

| Validation Data



Western Blot analysis of various, using primary antibody at 1:1000 dilution. Secondary antibody (catalog#:RS23920) was diluted at 1:10000

Contact information

Orders: order@immunoway.com
 Support: tech@immunoway.com
 Telephone: 877-594-3616 (Toll Free), 408-747-0185
 Website: <http://www.immunoway.com>
 Address: 2200 Ringwood Ave San Jose, CA 95131 USA



Please scan the QR code to access additional product information:
INCENP (Phospho Thr59) Rabbit pAb

For Research Use Only. Not for Use in Diagnostic Procedures.

[Antibody](#) | [ELISA Kits](#) | [Protein](#) | [Reagents](#)