

## HP1- $\beta$ (Phospho Thr51) Rabbit pAb

CatalogNo: YP1758

### Key Features

#### Host Species

- Rabbit

#### Reactivity

- Human, Mouse, Rat

#### Applications

- WB

#### MW

- 20kD (Calculated)

#### Isotype

- IgG

### Storage

**Storage\*** -15°C to -25°C/1 year (Do not lower than -25°C)

**Formulation** Liquid in PBS containing 50% glycerol, 0.5% BSA and 0.02% sodium azide.

### Recommended Dilution Ratios

**WB 1:500-2000**

### Basic Information

**Clonality** Polyclonal

### Immunogen Information

**Immunogen** Synthesized peptide derived from human HP1- $\beta$  (Phospho-Thr51)

**Specificity** This antibody detects endogenous levels of HP1- $\beta$  (Phospho-Thr51) at Human, Mouse, Rat. The name of modified sites may be influenced by many factors, such as species (the modified site was not originally found in human samples) and the change of protein sequence (the previous protein sequence is incomplete, and the protein sequence may be prolonged with the development of protein sequencing technology). When naming, we will use the "numbers" in historical reference to keep the sites consistent with the reports. The antibody binds to the following modification sequence (lowercase letters are modification sites): DNTWE

## Target Information

**Gene name** CBX1 CBX

**Protein Name** HP1- $\beta$  (Phospho-Thr51)

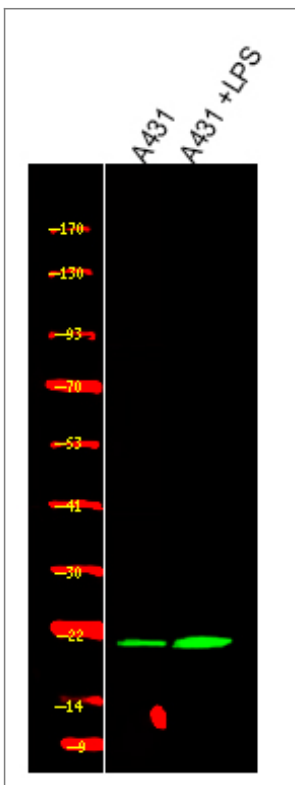
Organism	Gene ID	UniProt ID
Human	<a href="#">10951</a> ;	<a href="#">P83916</a> ;
Mouse	<a href="#">12412</a> ;	<a href="#">P83917</a> ;

**Cellular Localization** Nucleus . Unassociated with chromosomes during mitosis.

**Tissue specificity** Expressed in all adult and embryonic tissues.

**Function** Function:Component of heterochromatin. Recognizes and binds histone H3 tails methylated at 'Lys-9', leading to epigenetic repression. Interaction with lamin B receptor (LBR) can contribute to the association of the heterochromatin with the inner nuclear membrane.,online information:Heterochromatin protein 1 entry,PTM:Not phosphorylated.,similarity:Contains 2 chromo domains.,subcellular location:Unassociated with chromosomes during mitosis.,subunit:Homodimer. Interacts directly with CHAF1A, EMSY, LBR, TIF1/TIF1A and TRIM28/TIF1B PXVXL motif via the chromoshadow domain. Interacts directly with histone H3 methylated at 'Lys-9' via the chromo domain. Interacts with SUV39H1 and SETDB1, SUV420H1 and SUV420H2. Interacts with PRDM6.,tissue specificity:In all adult and embryonic tissues.,

## Validation Data



Western Blot analysis of various, using primary antibody at 1:1000 dilution. Secondary antibody(catalog#:RS23920) was diluted at 1:10000

## Contact information

Orders: [order@immunoway.com](mailto:order@immunoway.com)  
Support: [tech@immunoway.com](mailto:tech@immunoway.com)  
Telephone: 877-594-3616 (Toll Free), 408-747-0185  
Website: <http://www.immunoway.com>  
Address: 2200 Ringwood Ave San Jose, CA 95131 USA



Please scan the QR code to access additional product information:  
**HP1- $\beta$  (Phospho Thr51) Rabbit pAb**

---

For Research Use Only. Not for Use in Diagnostic Procedures.

[Antibody](#) | [ELISA Kits](#) | [Protein](#) | [Reagents](#)