

USP28 (Phospho Ser67) Rabbit pAb

CatalogNo: YP1754

Key Features

Host Species

- Rabbit

Reactivity

- Human, Mouse, Rat

Applications

- WB, IF

MW

- 118kD (Calculated)

Isotype

- IgG

Storage

Storage* -15°C to -25°C/1 year (Do not lower than -25°C)

Formulation Liquid in PBS containing 50% glycerol, 0.5% BSA and 0.02% sodium azide.

Recommended Dilution Ratios

WB 1:500-2000

IF 1:200-1:1000

Basic Information

Clonality Polyclonal

Immunogen Information

Immunogen Synthesized peptide derived from human USP28 (Phospho-Ser67)

Specificity This antibody detects endogenous levels of USP28 (Phospho-Ser67) at Human, Mouse, Rat. The name of modified sites may be influenced by many factors, such as species (the modified site was not originally found in human samples) and the change of protein sequence (the previous protein sequence is incomplete, and the protein sequence may be prolonged with the development of protein sequencing technology). When naming, we will use the "numbers" in historical reference to keep the sites consistent with the reports. The antibody binds to the following modification sequence (lowercase letters are modification sites): EPsQD

| Target Information

Gene name USP28 KIAA1515

Protein Name USP28 (Phospho-Ser67)

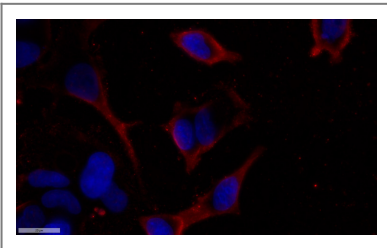
Organism	Gene ID	UniProt ID
Human	57646 ;	Q96RU2 ;
Mouse	235323 ;	Q5I043 ;
Rat	315639 ;	D3ZJ96 ;

Cellular Localization Nucleus, nucleoplasm .

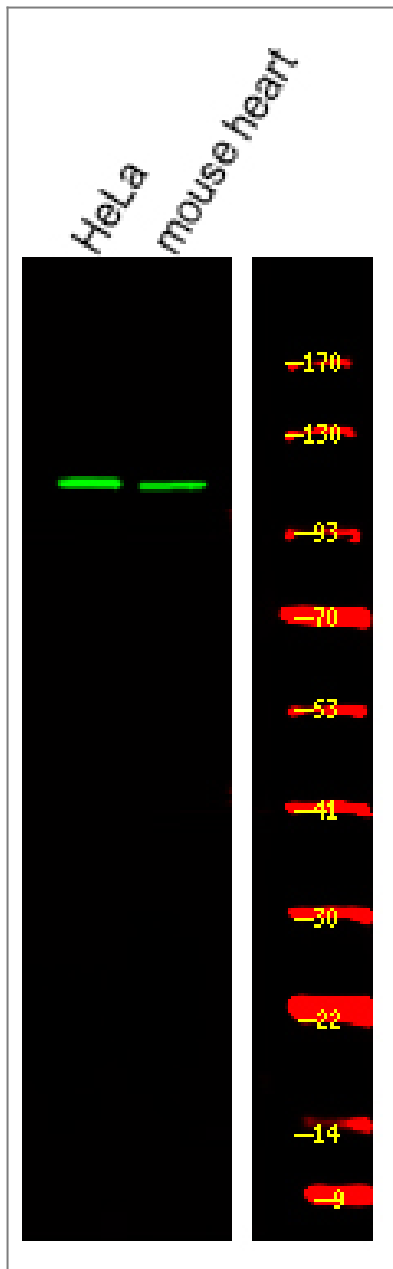
Tissue specificity Brain, Eye,

Function Catalytic activity: Ubiquitin C-terminal thioester + H(2)O = ubiquitin + a thiol., PTM: Phosphorylated upon DNA damage, probably by ATM or ATR., similarity: Belongs to the peptidase C19 family., similarity: Contains 1 UIM (ubiquitin-interacting motif) repeat.,

| Validation Data



Immunofluorescence analysis of MCF7 cell. 1, primary Antibody was diluted at 1:100(4°C overnight). 2, Goat Anti Rabbit IgG (H&L) - AFuor 594 Secondary antibody(catalog No: RS3611) was diluted at 1:500(room temperature, 50min).



Western Blot analysis of various, using primary antibody at 1:1000 dilution. Secondary antibody (catalog#:RS23920) was diluted at 1:10000

Contact information

Orders: order@immunoway.com
 Support: tech@immunoway.com
 Telephone: 877-594-3616 (Toll Free), 408-747-0185
 Website: <http://www.immunoway.com>
 Address: 2200 Ringwood Ave San Jose, CA 95131 USA



Please scan the QR code to access additional product information:
USP28 (Phospho Ser67) Rabbit pAb