

## TPPP (Phospho Ser18) Rabbit pAb

CatalogNo: YP1752

### Key Features

#### Host Species

- Rabbit

#### Reactivity

- Human, Mouse, Rat

#### Applications

- WB

#### MW

- 24kD (Calculated)

#### Isotype

- IgG

### Storage

**Storage\*** -15°C to -25°C/1 year (Do not lower than -25°C)

**Formulation** Liquid in PBS containing 50% glycerol, 0.5% BSA and 0.02% sodium azide.

### Recommended Dilution Ratios

**WB 1:500-2000**

### Basic Information

**Clonality** Polyclonal

### Immunogen Information

**Immunogen** Synthesized peptide derived from human TPPP (Phospho-Ser18)

**Specificity** This antibody detects endogenous levels of TPPP (Phospho-Ser18) at Human, Mouse, Rat. The name of modified sites may be influenced by many factors, such as species (the modified site was not originally found in human samples) and the change of protein sequence (the previous protein sequence is incomplete, and the protein sequence may be prolonged with the development of protein sequencing technology). When naming, we will use the "numbers" in historical reference to keep the sites consistent with the reports. The antibody binds to the following modification sequence (lowercase letters are modification sites): PKSPG

## Target Information

**Gene name** TPPP TPPP1

**Protein Name** TPPP (Phospho-Ser18)

Organism	Gene ID	UniProt ID
Human	<a href="#">11076;</a>	<a href="#">O94811;</a>
Mouse	<a href="#">72948;</a>	<a href="#">Q7TQD2;</a>

### Cellular Localization

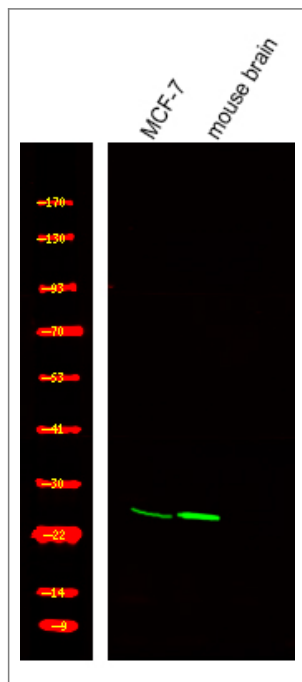
Golgi outpost . Cytoplasm, cytoskeleton, microtubule organizing center . Cytoplasm, cytoskeleton . Nucleus . Cytoplasm, cytoskeleton, spindle . Specifically localizes to the postsynaptic Golgi apparatus region, also named Golgi outpost, which shapes dendrite morphology by functioning as sites of acentrosomal microtubule nucleation (By similarity). Mainly localizes to the cytoskeleton (PubMed:18028908). Also found in the nucleus; however, nuclear localization is unclear and requires additional evidences (PubMed:18028908). Localizes to glial Lewy bodies in the brains of individuals with synucleinopathies (PubMed:15590652, PubMed:17027006). During mitosis, colocalizes with LIMK2 at the mitotic spindle (PubMed:22328514). .

**Tissue specificity** Widely expressed.

### Function

Function:Promotes in vitro the polymerization of tubulin into double-walled tubules and polymorphic aggregates or bundled stabilized microtubules blocks. When overexpressed, inhibits mitotic spindle assembly and nuclear envelope breakdown, apparently without affecting other cellular events.,PTM:Phosphorylated by TPK II. Poor substrate for GSK3.,similarity:Belongs to the TPPP family.,subunit:May form dimers. Binds tubulin; binding is inhibited by GTP. Interacts with GSK3.,tissue specificity:Widely expressed.,

## Validation Data



Western Blot analysis of various,using primary antibody at 1:1000 dilution. Secondary antibody(catalog#:RS23920) was diluted at 1:10000

## | Contact information

Orders: order@immunoway.com  
Support: tech@immunoway.com  
Telephone: 877-594-3616 (Toll Free), 408-747-0185  
Website: <http://www.immunoway.com>  
Address: 2200 Ringwood Ave San Jose, CA 95131 USA



Please scan the QR code to access additional product information:  
**TPPP (Phospho Ser18) Rabbit pAb**

---

For Research Use Only. Not for Use in Diagnostic Procedures.

[Antibody](#) | [ELISA Kits](#) | [Protein](#) | [Reagents](#)