

PASK (Phospho Thr1165) Rabbit pAb

CatalogNo: YP1742 Orthogonal Validated 

Key Features

Host Species

- Rabbit

Reactivity

- Human, Mouse, Rat

Applications

- WB

MW

- 146kD (Calculated)

Isotype

- IgG

Storage

Storage* -15°C to -25°C/1 year (Do not lower than -25°C)

Formulation Liquid in PBS containing 50% glycerol, 0.5% BSA and 0.02% sodium azide.

Recommended Dilution Ratios

WB 1:500-2000

Basic Information

Clonality Polyclonal

Immunogen Information

Immunogen Synthesized peptide derived from human PASK (Phospho-Thr1165)

Specificity This antibody detects endogenous levels of PASK (Phospho-Thr1165) at Human, Mouse, Rat. The name of modified sites may be influenced by many factors, such as species (the modified site was not originally found in human samples) and the change of protein sequence (the previous protein sequence is incomplete, and the protein sequence may be prolonged with the development of protein sequencing technology). When naming, we will use the "numbers" in historical reference to keep the sites consistent with the reports. The antibody binds to the following modification sequence (lowercase letters are modification sites):CGtIE

Target Information

Gene name PASK KIAA0135

Protein Name PAS domain-containing serine/threonine-protein kinase

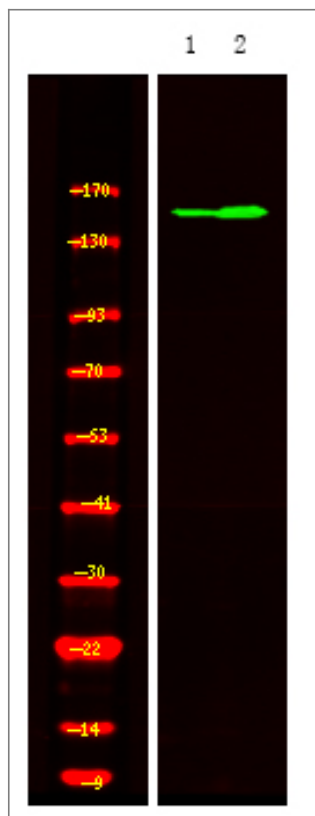
Organism	Gene ID	UniProt ID
Human	23178;	Q96RG2;
Mouse	269224;	Q8CEE6;

Cellular Localization Cytoplasm . Nucleus . Localizes in the nucleus of testis germ cells and in the midpiece of sperm tails.

Tissue specificity Ubiquitously expressed, with slightly higher expression in brain, prostate and testis. Reduced expression was found in placenta. Present in germ cells of testis and in the midpiece of sperm tails (at protein level).

Function Catalytic activity:ATP + a protein = ADP + a phosphoprotein.,enzyme regulation:Activated by autophosphorylation on Thr-1161 and Thr-1165 and inhibited by the first PAS domain.,PTM:Autophosphorylated on Thr-1161 and Thr-1165.,similarity:Belongs to the protein kinase superfamily. CAMK Ser/Thr protein kinase family.,similarity:Contains 1 protein kinase domain.,similarity:Contains 2 PAS (PER-ARNT-SIM) domains.,tissue specificity:Ubiquitously expressed, with slightly higher expression in brain, prostate and testis. Reduced expression was found in placenta.,

Validation Data



Western Blot analysis of 1 Jurkat cell 2 LPS 100ng/mL 30min treated ,using primary antibody at 1:1000 dilution. Secondary antibody(catalog#:RS23920) was diluted at 1:10000

| Contact information

Orders: order@immunoway.com
Support: tech@immunoway.com
Telephone: 877-594-3616 (Toll Free), 408-747-0185
Website: <http://www.immunoway.com>
Address: 2200 Ringwood Ave San Jose, CA 95131 USA



Please scan the QR code to access additional product information:
PASK (Phospho Thr1165) Rabbit pAb

For Research Use Only. Not for Use in Diagnostic Procedures.

[Antibody](#) | [ELISA Kits](#) | [Protein](#) | [Reagents](#)