

TOPBP1 (Phospho Ser1159) Rabbit pAb

CatalogNo: YP1741 Orthogonal Validated 

Key Features

Host Species

- Rabbit

Reactivity

- Human, Mouse, Rat

Applications

- WB

MW

- 167kD (Calculated)

Isotype

- IgG

Storage

Storage* -15°C to -25°C/1 year (Do not lower than -25°C)

Formulation Liquid in PBS containing 50% glycerol, 0.5% BSA and 0.02% sodium azide.

Recommended Dilution Ratios

WB 1:500-2000

Basic Information

Clonality Polyclonal

Immunogen Information

Immunogen Synthesized peptide derived from human TOPBP1 (Phospho-Ser1159)

Specificity This antibody detects endogenous levels of TOPBP1 (Phospho-Ser1159) at Human, Mouse, Rat. The name of modified sites may be influenced by many factors, such as species (the modified site was not originally found in human samples) and the change of protein sequence (the previous protein sequence is incomplete, and the protein sequence may be prolonged with the development of protein sequencing technology). When naming, we will use the "numbers" in historical reference to keep the sites consistent with the reports. The antibody binds to the following modification sequence (lowercase letters are modification sites): LAsNL

| Target Information

Gene name TOPBP1 KIAA0259

Protein Name TOPBP1 (Phospho-Ser1159)

Organism	Gene ID	UniProt ID
Human	11073 ;	Q92547 ;
Mouse	235559 ;	Q6ZQF0 ;

Cellular Localization

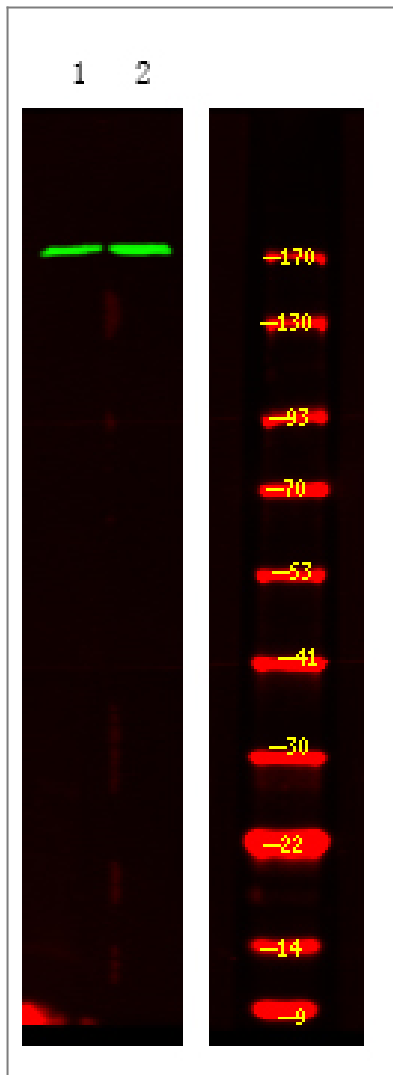
Nucleus. Cytoplasm, cytoskeleton, microtubule organizing center, centrosome. Cytoplasm, cytoskeleton, spindle pole. Chromosome. Detected on unpaired autosomes in meiotic prophase cells. Detected on X and Y chromosomes during later stages of prophase. Colocalizes with ATR and H2AX at unsynapsed chromosome cores during prophase (By similarity). Has a uniform nuclear distribution during G phase. Colocalizes with BRCA1 at stalled replication forks during S phase. In mitotic cells it colocalizes with BRCA1 at spindle poles and centrosomes during metaphase and anaphase. Detected in discrete foci together with PML and numerous DNA repair enzymes after DNA damage by alkylating agents, UV or gamma irradiation. Localizes to sites of DNA damage in a H2AX- independent manner. .

Tissue specificity Highly expressed in heart, brain, placenta, lung and kidney.

Function

Function:Required for DNA replication. Plays a role in the rescue of stalled replication forks and checkpoint control. Binds double-stranded DNA breaks and nicks as well as single-stranded DNA. Recruits the SWI/SNF chromatin remodeling complex to E2F1-responsive promoters. Down-regulates E2F1 activity and inhibits E2F1-dependent apoptosis during G1/S transition and after DNA damage. Induces a large increase in the kinase activity of ATR.,induction:Up-regulated during the S phase of the cell cycle. Up-regulated by E2F1 and interferon.,PTM:Phosphorylated on serine and threonine residues in response to X-ray irradiation.,PTM:Ubiquitinated and degraded by the proteasome. X-ray irradiation reduces ubiquitination.,similarity:Contains 8 BRCT domains.,subcellular location:Detected on unpaired autosomes in meiotic prophase cells. Detected on X and Y chromosomes during later stages of prophase. Colocalizes with ATR and H2AFX at unsynapsed chromosome cores during prophase (By similarity). Has a uniform nuclear distribution during G phase. Colocalizes with BRCA1 at stalled replication forks during S phase. In mitotic cells it colocalizes with BRCA1 at spindle poles and centrosomes during metaphase and anaphase. Detected in discrete foci together with PML and numerous DNA repair enzymes after DNA damage by alkylating agents, UV or gamma irradiation.,subunit:Binds E2F1, PML, RAD9A, SMARCA2, SMARCA4, POLE and UBR5. May interact with TOP2B.,tissue specificity:Highly expressed in heart, brain, placenta, lung and kidney.,

| Validation Data



Western Blot analysis of 1HeLa cell 2 LPS 100ng/mL 30min treated ,using primary antibody at 1:1000 dilution. Secondary antibody(catalog#:RS23920) was diluted at 1:10000

Contact information

Orders: order@immunoway.com
 Support: tech@immunoway.com
 Telephone: 877-594-3616 (Toll Free), 408-747-0185
 Website: <http://www.immunoway.com>
 Address: 2200 Ringwood Ave San Jose, CA 95131 USA



Please scan the QR code to access additional product information:
TOPBP1 (Phospho Ser1159) Rabbit pAb

For Research Use Only. Not for Use in Diagnostic Procedures.

[Antibody](#) | [ELISA Kits](#) | [Protein](#) | [Reagents](#)